

# BT0110L/R SPECIFICATIONS

## metrix-6 blu-stone™ skirted alcove bathtub

### FEATURES:

- Skirted blu-stone™ alcove bathtub designed for a three-wall recess
- Adjustable feet
- Alcove installation requires separate tile flange, not included (Blu recommends TF.BTSB tile flange)
- Streamlined, high profile one piece design
- 60" (1525mm) L x 32" (812mm) W x 20¼" (515mm) H
- Available in left or right hand drain
- Includes integral slot overflow & matching blu-stone™ waste cover
- Made of blu-stone™ providing the look and feel of natural stone
- Stronger and more durable than acrylic
- Non-porous, stain resistant surface that does not require sealing
- Does not promote bacteria, mold or fungi
- Ultra deep bathing well for compact foot-print
- Tailpiece not included (Blu recommends BTWaste.RN or BTWaste.Cl.RN)

### SPECIFICATIONS:

Basin Area:	48" (1220mm) x 24¾" (627mm)*
Top Area:	54¼" (1375mm) x 26¾" (677mm)*
To Overflow:	2¼" (60mm)*
Water Depth:	14" (355mm)*
Capacity:	81G (306L)*
Slope of Backrest:	73°*
Weight:	440 lbs (200 kg)
Hot water supply req'd:	Should be 70% of water capacity of tub or greater
Warranty:	Five Year Warranty (Residential use) One Year Warranty (Commercial use)
Material:	blu-stone™
Shipping Weight:	573 lbs (260 kg)*
Shipping Dimensions:	(LWH) 63" x 34" x 23" (1600mm x 864mm x 584mm)*

### FINISH:

White Matte or Gloss as standard

### ACCESSORIES (sold separately):

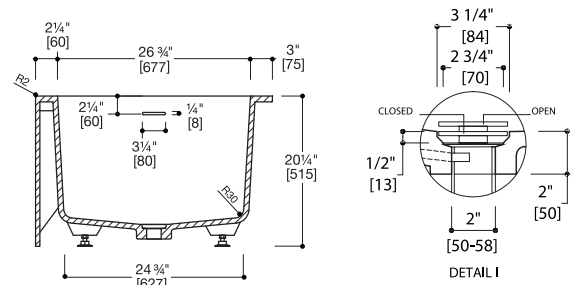
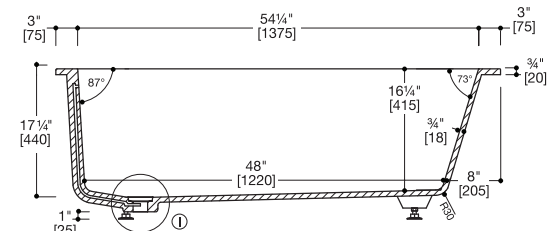
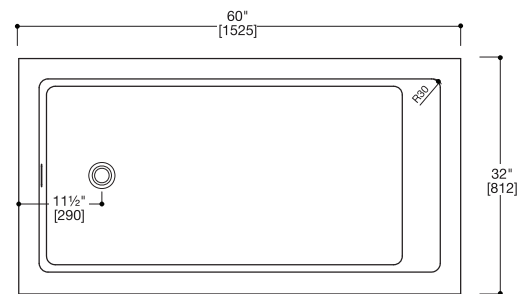
- TF.BTSB tile flange for alcove installation
- BTWaste.RN or BTWaste.Cl.RN Island tub drain for easy installation

### INSTALLATION NOTES:

Install this product according to the installation guide. Floor support under bath must provide for a minimum of 1600 lbs (725kg). Installation will vary. Our products must be installed by certified professionals only and according to our installation guide as well as federal, provincial / state and local building codes and regulations.

### CODES / STANDARDS APPLICABLE:

- ASME A112.19.2
- IAPMO / cUPC
- ICC / ANSI A117.1
- CSA B 45
- Fixture dimensions and hydraulic performance meet or exceed ANSI / ASME standard A112.19.2, A112.19.9M and CAN / CSA B 45 requirements.



\*Measurements subjected to ± ¼" [5mm].  
Note: These dimensions and specifications are subject to change without notice.