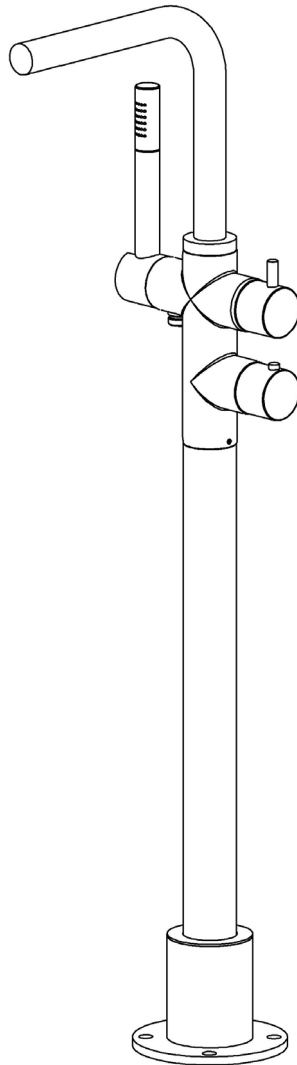


Thermostatic Floor-Mounted Bathtub Mixer

Installation Guide



TSP511

Attention – Before Installation

1. Inspect this product to ensure you have all parts as shown that are required for proper installation.
2. The valve cartridge has been factory tested and adjusted – DO NOT TAKE THE CARTRIDGE APART. Taking the cartridge apart will void the warranty.
3. Ensure that both hot and cold water feeds are properly connected to the marked lav connecting.
4. This product must be installed by a professional contractor.
5. Refer to the specification and assembly drawings attached for installation directions.
6. Flow Pressure –Min. 25 PSI, Max. 80 PSI. Recommended pressure – 50 to 60 PSI.

Installation Requirements

Please read the instructions carefully so as to avoid any damage to the fixture.

1. To ensure this product is installed properly, you must read and follow these guidelines.
2. The owner/user of the faucet must keep this information for future reference.
3. Be sure your installation conforms to local codes.
4. Refer to the specification and assembly drawings attached. Faucet is sold partially assembled but shown fully disassembled for illustrative and service purposes only.
5. Inspect this product to ensure you have all parts required for proper installation.
6. Use only a strap wrench or protected/smooth-jaw wrench on any finished surface.
7. If possible, install the faucet assembly on the sink or mounting surface before setting.
8. Do NOT use putty during this installation.

Cleaners For Fittings And Accessories

To avoid damaging the surface and working components of the fittings, certain precautions must be taken in terms of use and subsequent cleaning as many cleaning agents contain acids for general cleaning and removing calcium deposits. When caring for your fittings and accessories, please note the following:

- Only apply cleaners which are expressly intended for the use
- Never use any cleaner containing hydrochloric acid, formic acid or acetic acid on or near the fitting, as they can cause considerable damage
- Do not use cleaners containing phosphoric acid
- Do not use cleaners containing chlorine bleach solutions
- Never mix or combine cleaning agents
- Abrasive cleaners and unsuitable scouring agents such as scouring pads

Technical Support Assistance

If further assistance is required, please contact:

Product support at 1.866.907.0122 (09:00 - 17:00hrs PST) or email technical@blubathworks.com

North America

Blu Bathworks Inc.

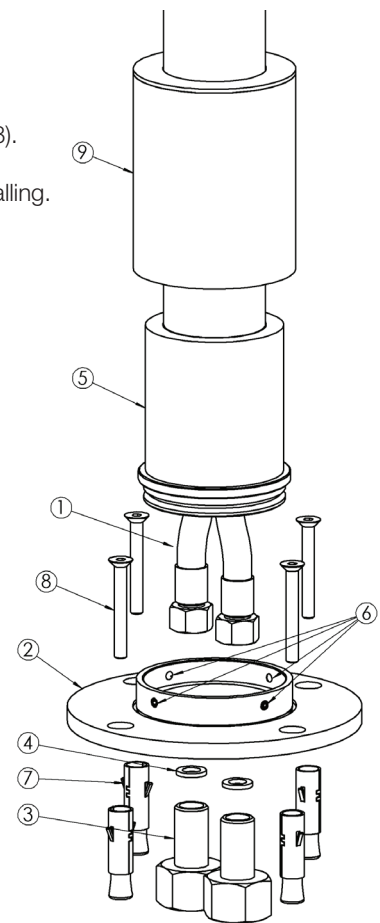
188 Smithe Street, Vancouver BC, Canada, V6B 6A9

T+1.604.299.0122 F+1.604.299.0125

INSTALLATION

Base Fitting - **Concrete Floor**

- Place the base (2) of the column on the floor. Mark hole locating support.
- Drill the floor with the references of the holes of the floor base.
- Insert the screw anchors (7) into the floor, position the base (2) and fit the screws (8).
- Insert the flexible pipes (1) into the base (2).
- Tighten the nuts of flexible pipes (1) to water supply pipes into the floor before installing. The nut of hot water connection is painted red.
- Engage the body (5) on the base (2) and fix with the grub screws (6).
- Lower the cylindrical cover (9) and insert it in the seat of the base (2).



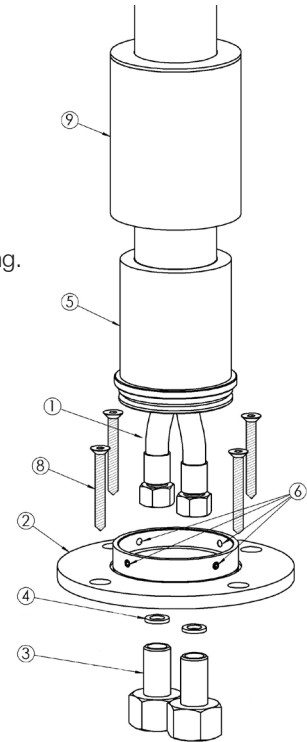
INSTALLATION

Base Fitting - Wooden Floor

Note: Blu recommends adding additional wood blocking under subflooring to support this fixture on wooden floors.

Note: Screw fixing kit is not supplied for wooden floor installation.

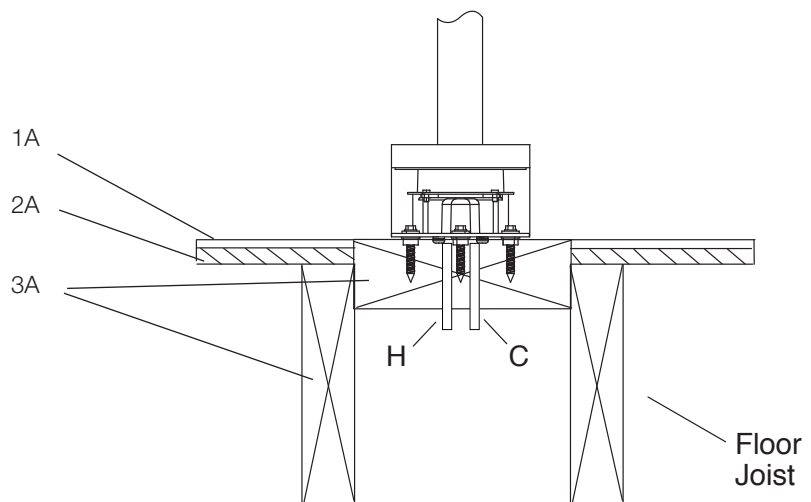
- Place the base (2) of the column on the floor. Mark hole locating to support.
- Drill the floor with the references of the holes of the floor base.
- Insert the flexible pipes (1) into the base (2).
- Tighten the nuts of flexible pipes (1) to water supply pipes into the floor before installing. The nut of hot water connection is painted red.
- Engage the body (5) on the base (2) and fixing it with the grub screws (6).
- Lower the cylindrical cover (9) and insert it in the seat of the base (2).



FLOOR BLOCKING:

Wooden Floors

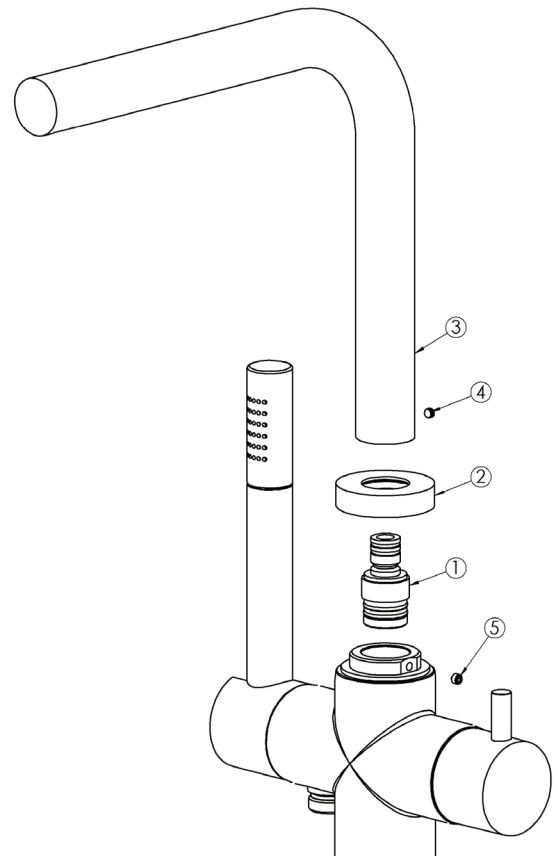
- 1A: Floor Finish
- 2A: Subfloor
- 3A: Additional Wood Blocking



INSTALLATION

Fixing Spout

- To fix the spout to the body of the column insert the ring nut (2) on the spout (3).
- Engage the connection (1) on the body and secure it in position with the grub screw (5)
- Screw the ring nut (2) on the body.
- Insert the spout in to the connection (1) and secure in the required position with grub screw (4)



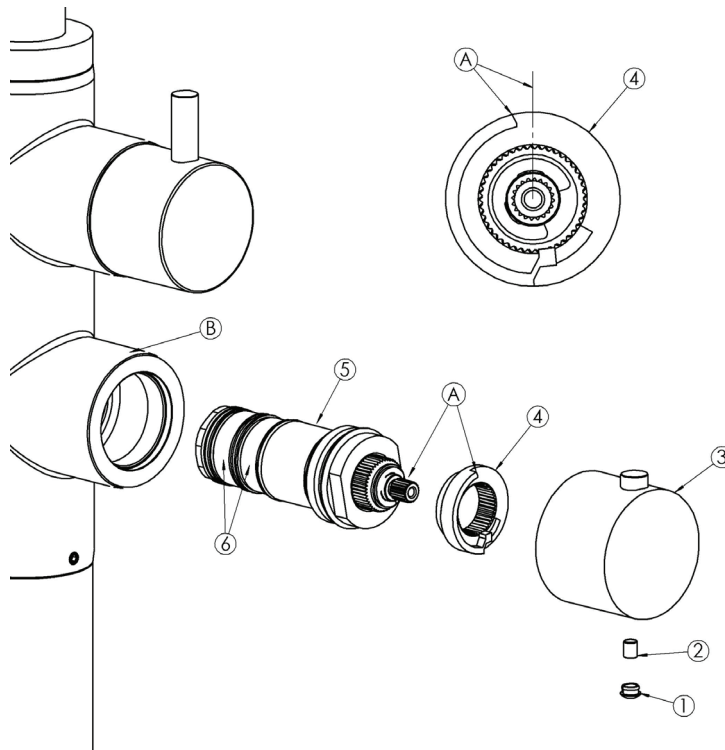
MAINTENANCE

Cartridge change and cleaning

Through years of use impurities and lime scale could restrict flow of water through the filters of the cartridge.

To clean the filters:

- Close the inlets valves water supply
- Remove the plug (1), remove grub screw (2) with 2.5mm / 0.09in Allen key(2), take off temperature control (3) and stepped plastic washer (4).
- Unscrew cartridge (5) using 30mm / 1.18in spanner. Wash the filters (6) under running water or leave to soak in vinegar or de-scaling agent.
- Before re-assembling the cartridge(5) clean its housing with wet cloth and grease the "O" rings on cartridge.
- Re-assemble the cartridge into the body.
- Re-fit stepped plastic washer according to the drawing and turn the spindle (A) until you reach required temperature 38°C.
- Re-fit temperature control knob(3). Test that the mixed temperature is set at 38°C.

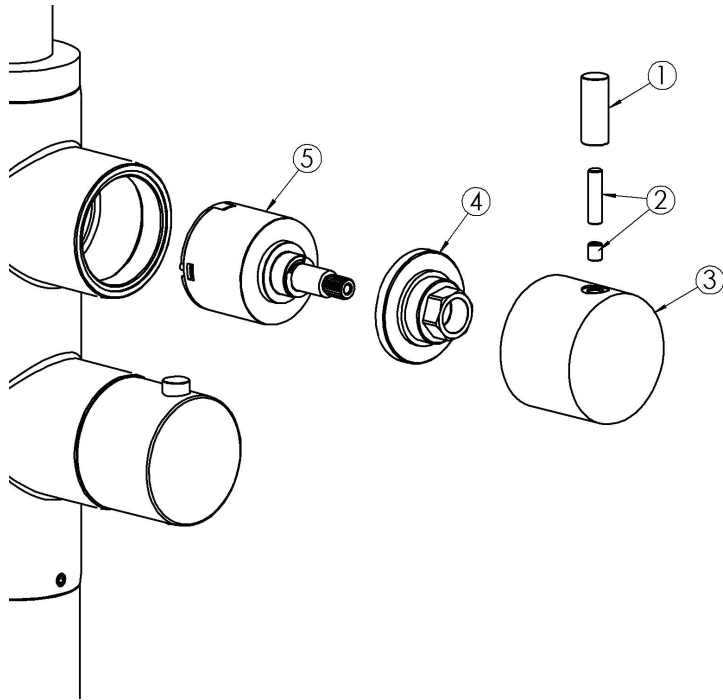


MAINTENANCE

Diverter cartridge change and cleaning

To clean the filters:

- Close the inlets valves water supply
- Remove the on/off control lever (1), remove grub screws (2) with 2.5mm / 1/8" Allen key, take off the on/off control knob (3).
- Unscrew the flange (4) using 19mm / 3/4" spanner.
- Remove the diverter cartridge (5)
- Before re-assembling the diverter cartridge(5) clean its housing with wet cloth and grease the gasket at the bottom of the cartridge.
- Place the new diverter cartridge by inserting the two pivots into the corresponding seats.
- Place the new cartridge(5), inserting the two pivots into the corresponding seats.
- Re-fit on/off control knob (3).
- Re-fit control lever (1).

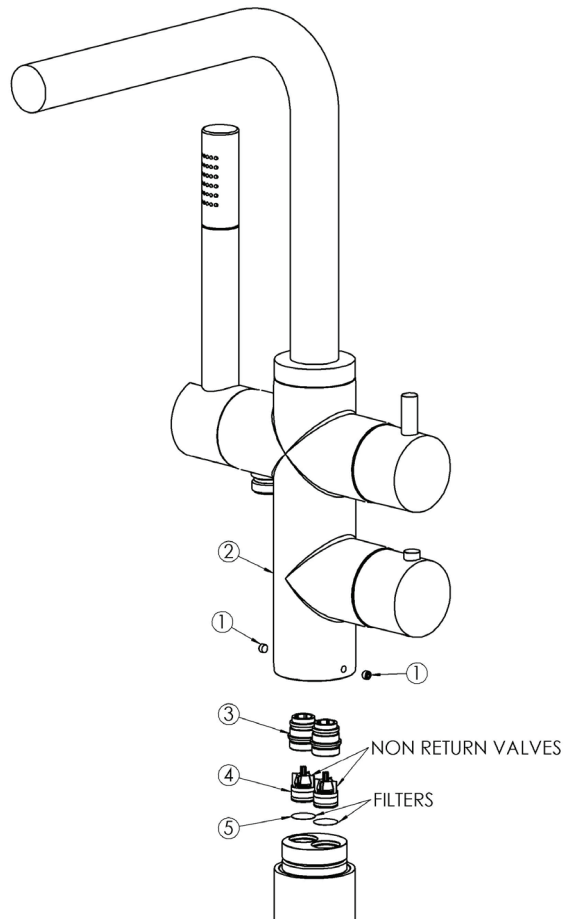


MAINTENANCE

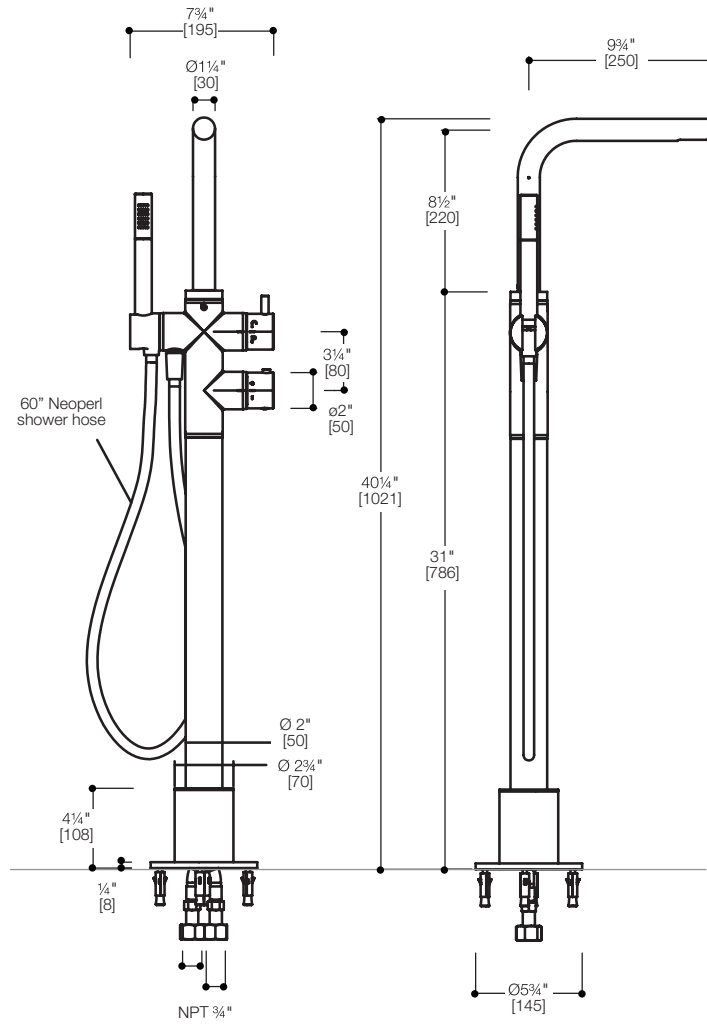
Cleaning Filters

If the flow is insufficient, the filters set in the inlets before the check-valves could be obstructed by limestone or dirt. In this case, proceed as follows:

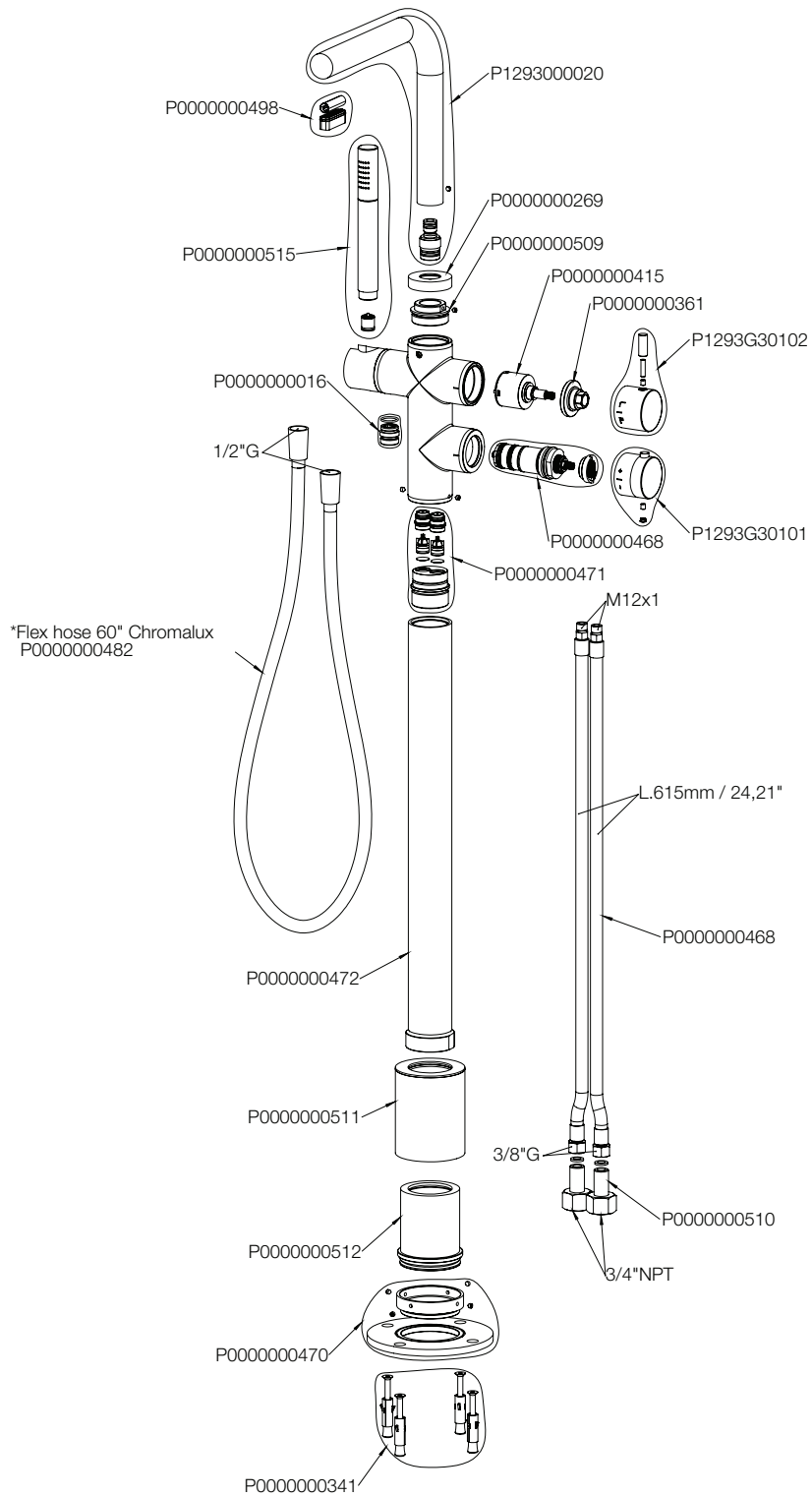
- Before disassembling the body (2) follow the instructions "INLETS CLOSURE" then remove the two grub screw (1).
- Unscrew the connections (3) with an allen key 10mm / ¼".
- With pliers remove the check valves (4) and the filters (5).
- Clean them and re-install the filters and the check valves in to the body, screw the connections and fix the body (2) with the grub screws (1).



TSP511



TSP511



warranty

LIMITED FURNITURE RESIDENTIAL WARRANTY

Blu Bathworks® ("Blu") furniture products are warranted to the original purchaser to be free from defects in all material and workmanship during normal residential use for a period of five (5) years from the date of purchase. Blu will, at its election, repair, provide a replacement part or product, or make appropriate adjustment, subject to the terms and conditions set forth in this warranty.

LIMITED CERAMICS RESIDENTIAL WARRANTY

Blu Bathworks® ("Blu") ceramic products are warranted to the original purchaser to be free from defects in all material and workmanship during normal residential use for a period of one (1) year from the date of purchase. Blu will, at its election, repair, provide a replacement part or product, or make appropriate adjustment, subject to the terms and conditions set forth in this warranty.

LIMITED blu-stone™ RESIDENTIAL WARRANTY

Blu Bathworks® ("Blu") blu-stone™ products are warranted to the original purchaser to be free from defects in all material and workmanship during normal residential use for a period of five (5) years from the date of purchase. Blu will, at its election, repair, provide a replacement part or product, or make appropriate adjustment, subject to the terms and conditions set forth in this warranty. Blu Bathworks® does not recommend exceeding US/Canada maximum hot water temperature regulations of 150°F/65°C, respectively. Exceeding stated temperatures could result in damage to blu.stone basins and bathtubs.

LIMITED ACRYLIC BATHTUBS RESIDENTIAL WARRANTY

Blu Bathworks® ("Blu") acrylic bathtubs are warranted to the original purchaser to be free from defects in all material and workmanship during normal residential use for a period of five (5) years from the date of purchase. Blu will, at its election, repair, provide a replacement part or product, or make appropriate adjustment, subject to the terms and conditions set forth in this warranty.

LIMITED TAPWARE RESIDENTIAL WARRANTY

Blu Bathworks® ("Blu") tapware products are warranted to the original purchaser to be free from defects in all mechanical parts and polished chrome finishes during normal residential use for as long as the original purchaser owns his or her home. Blu will, at its election, repair, provide a replacement part or product, or make appropriate adjustment, subject to the terms and conditions set forth in this warranty.

LIMITED ELECTRONICA TAPWARE RESIDENTIAL WARRANTY

Blu Bathworks® ("Blu") electronica tapware products are warranted to the original purchaser to be free from defects in all electronic parts during normal residential use for a period of five (5) years from the date of purchase. Blu will, at its election, repair, provide a replacement part or product, or make appropriate adjustment, subject to the terms and conditions set forth in this warranty.

LIMITED COMMERCIAL WARRANTY

Blu Bathworks® ("Blu") products are warranted to the original purchaser to be free from defects in all material and workmanship during normal usage for a period of one (1) year from the date of purchase. Blu will, at its election, repair, provide a replacement part or product, or make appropriate adjustment, subject to the terms and conditions set forth in this warranty.

terms and conditions

This warranty applies only to Blu Bathworks® ("Blu") products distributed in North America.

This warranty is non-transferable and is for the exclusive benefit of the original purchaser of a Blu product. This warranty may be exercised by the original purchaser of a unit in a new residential development. Blu recommends using a professional plumber for all installation and repair. This warranty does not apply to products that have been installed in any manner other than as set out in Blu's printed instructions, or to products that have been altered in any way.

For further clarity, the above stated warranty does not cover or apply to damage attributable to:

- (a) neglect, misuse, abuse, accident or negligence;
- (b) normal wear and tear;
- (c) dirt or lime scale, or the use of inappropriate cleaners (such as those containing abrasives, ammonia, acids, waxes, bleaches, solvents, alcohol, or any product not recommended for chrome); and
- (d) damage caused by transportation, or improper storage.

This is the only warranty of Blu, which makes no other warranty of any kind. Blu disclaims any liability for special, incidental or consequential damages. In no event shall the liability of Blu under this warranty exceed the purchase price of the product.

PROCEDURE FOR WARRANTY SERVICE

Refer to blubathworks.com for policy and procedures relating to requests for service under the terms of this warranty.

Original proof of purchase is required. Blu is not responsible for removal or installation costs, or the costs of shipping and handling associated with any service. Repaired or replaced products or parts are warranted only for the period remaining under the initial warranty.