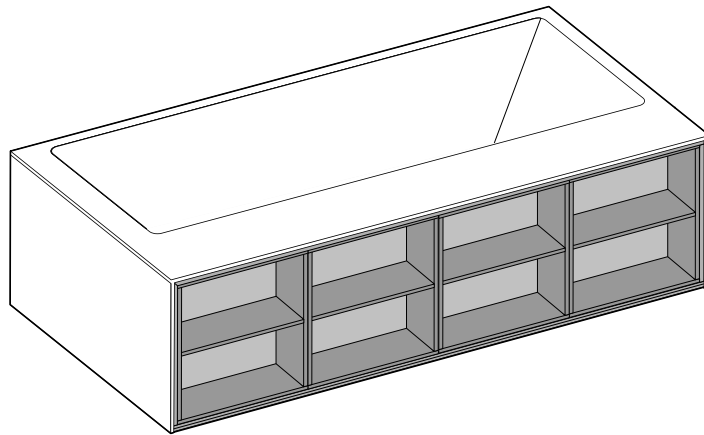


amanpuri·1 blu·stone™ bathtub with recessed shelving

Installation Guide



BT6100

Attention — Before Installation

Thank you for choosing from among Blu's quality line of products. We recommend that you carefully read this installation guide to ensure your bathtub's proper operation and reliability for many years to come.

WARNING: This bathtub is made of a quartzite stone and resin. The tub's weight is approximately 450 lbs (200 kg). We recommend that the installation be done by a minimum of 2 people as a security precaution. Also make sure to adopt the proper posture when lifting the tub.

Adhere to all local building and plumbing codes. The diagrams in this guide are not construction plans. They are visual aids.

Installation Requirements

Please read the instructions carefully so as to avoid any damage to the fixture.

1. To ensure this product is installed properly, you must read and follow these guidelines.
2. The owner/user of the product must keep this information for future reference.
3. Consult local building codes to make sure the installation complies with standards.
4. Remove the unit from its packaging. Before disposing of it, inspect the unit to make sure its in good shape. Should inspection reveal any damage or defect in the finish, contact your distributor. The warranty does not cover damages or defects in the finish once it has been installed. Blu Bathworks' responsibility for shipping damages ceases upon delivery of the product in good order to the carrier. All complaints regarding damage due to transport must be made directly to the carrier.
5. Place the unit in the bathroom before you start working. Conserve all nuts and bolts.
6. To protect the unit during installation, we recommend that you lay a piece of cardboard on the bottom.
7. If the unit is covered with polyethylene protective film, do not remove until installation is complete to grant maximum protection. However, remove film where any two surfaces will be in permanent contact.
8. Make sure the bathroom floor is level and strong enough to support the weight of the water-filled bathtub. If you are renovating, bring down the walls to install framing and plumbing. Make sure the walls are properly insulated and comply with the appropriate building code.
9. Verify that all dimensions on the plan are the same as the ones of the unit.
10. If an apron is to be installed, make sure the bathtub is at the same height as the floor covering.

Technical Support Assistance

If further assistance is required, please contact:

Product Support at 1.866.907.0122 (09:00 – 17:00hrs PST) or email technical@blubathworks.com

North America

Blu Bathworks Inc.

188 Smithe Street, Vancouver, BC, Canada, V6B 6A9

T +1.604.299.0122 F +1.604.299.0125

Installation Notes

Important! Install this product according to the installation guide. Floor support under bath must provide for a minimum of 1400 lbs (635 kg). Hot water supply should be 70% of capacity or greater. Installation will vary.

Installation for Freestanding Bathtubs

IMPORTANT: Ensure to check the bathtub for proper drainage before any draining is done.

- Waste is not pre-installed - it is packaged individually & shipped with the bathtub unit. Please ensure all parts are present.
- Blu recommends that the tub be water tested before installation is complete. Fill the tub to overflow and inspect for leaks.

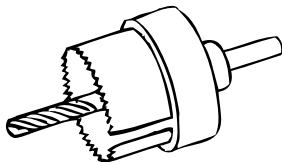
Installation Instructions

1. Decide exactly where you wish to install the bathtub and place the tub where it is to be installed and ensure the tub is level. Note: Use 1 1/2" (FIP) adaptor.
2. Install the basic plumbing components: water inlet and waste. These tub models require a vertical plumbing connection from the floor.
3. **IMPORTANT:** The faucet can be installed on the bathtub. Read the manufacturer's instructions for installation details.
4. Shims may be required to level the tub depending on finish floor surfaces. Shims are not included. When adjusting the level allow a slight clearance (1/8") between the finished floor and the apron. Note: use a level to ensure accuracy.
5. Connect the bathtub drain to the waste. Hook up the water to the faucet. Check that all connections are waterproof.
6. Do a silicone joint pressure seal between the base of the bathtub and the floor. The sealer absolutely must penetrate thoroughly beneath the rim of the apron. This will ensure that no water seeps underneath the bathtub, while also supporting the tub apron.

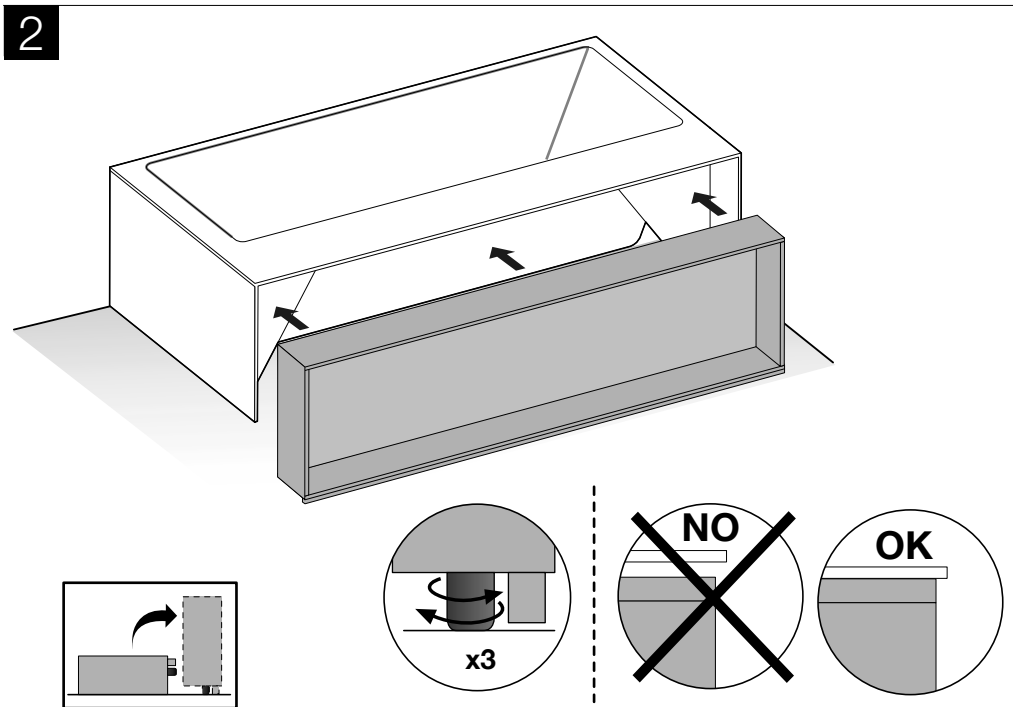
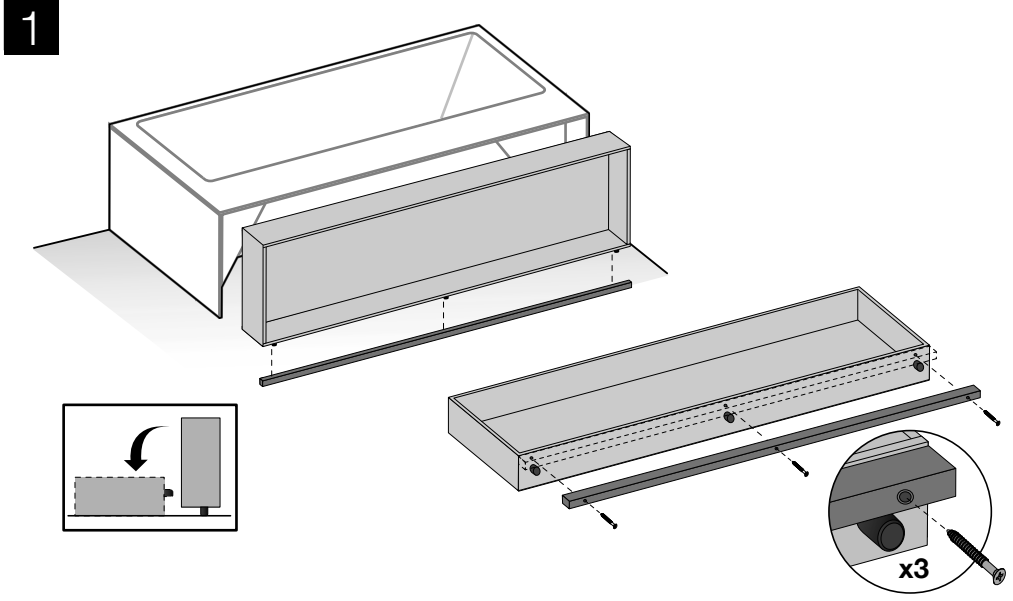
Drilling Notes for Deck-Mount Faucet Installation

1. Use a WIDIA (Cemented Carbide) cutter with the appropriate diameter according to the faucet manufacturer's install guide.
2. Mark out the center of the hole to be drilled or use template supplied with the faucet
3. Install the tub on a stable surface. Make sure that you are in a comfortable working position.
4. Hold the drill perpendicular to the surface.
5. Make sure to apply light pressure when drilling. You may want to pull the drill out occasionally to remove any dust accumulation.

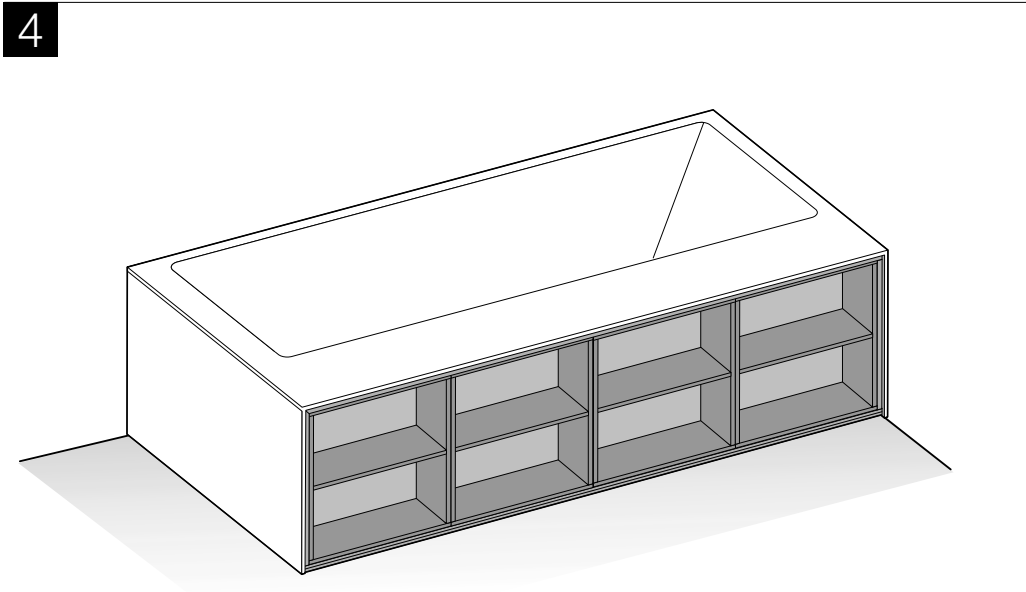
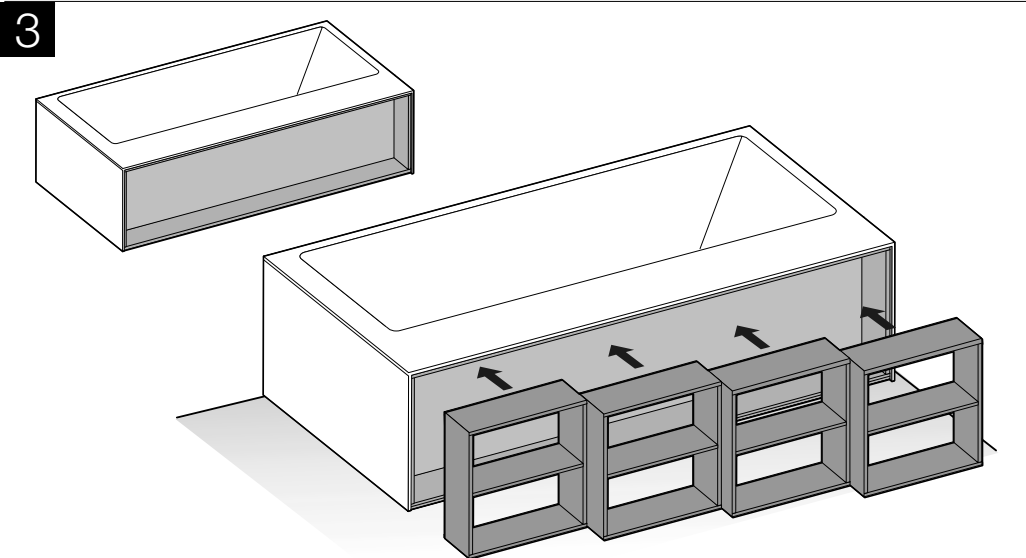
N.B. Material thickness is 3/4".



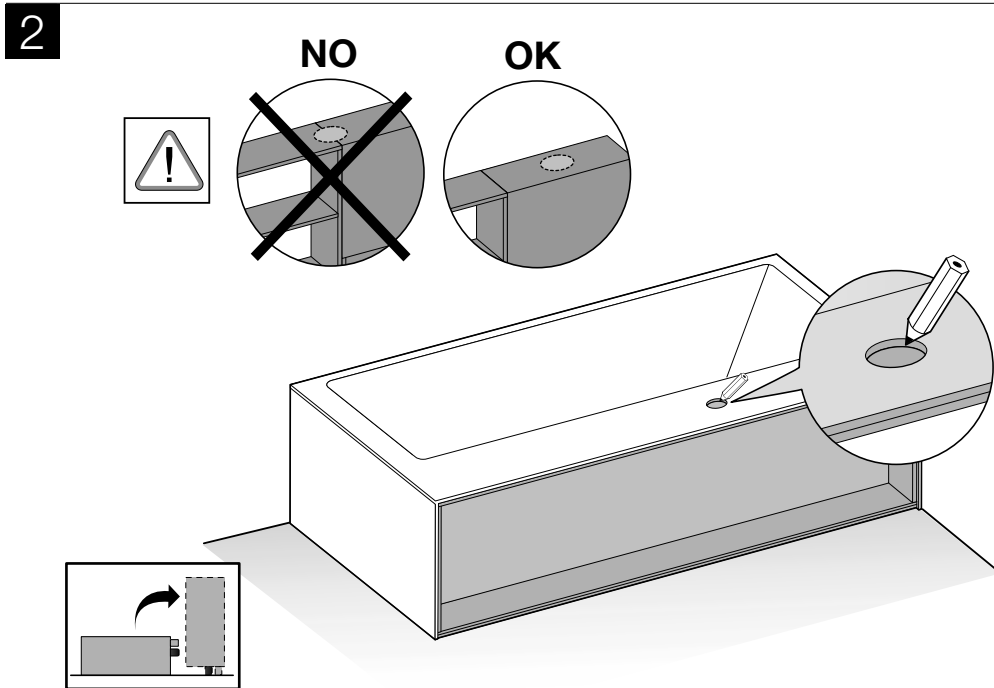
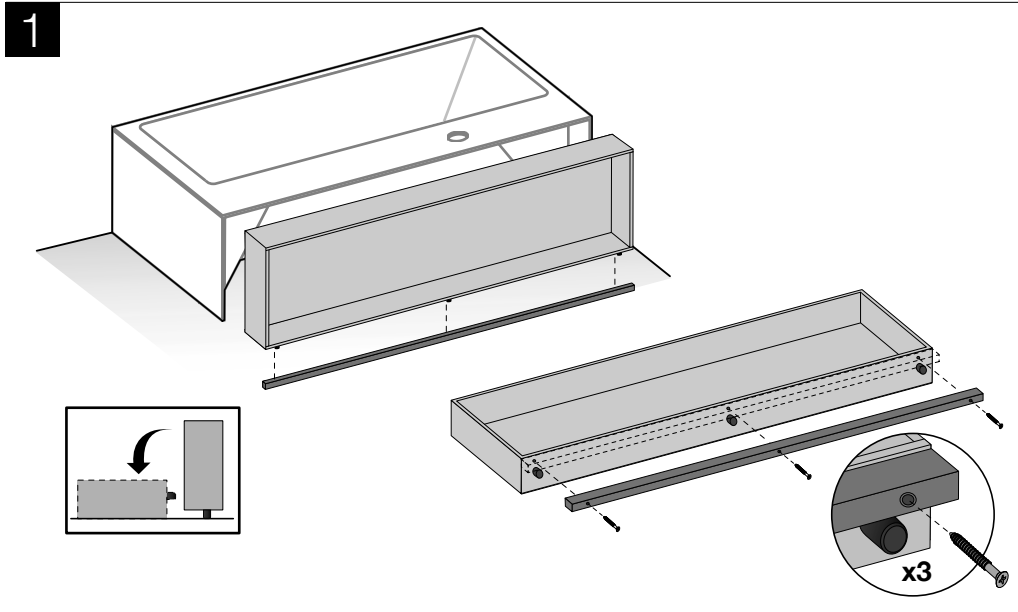
A: Left-Hand / Right-Hand Drain Installation



A: Left-Hand / Right-Hand Drain Installation

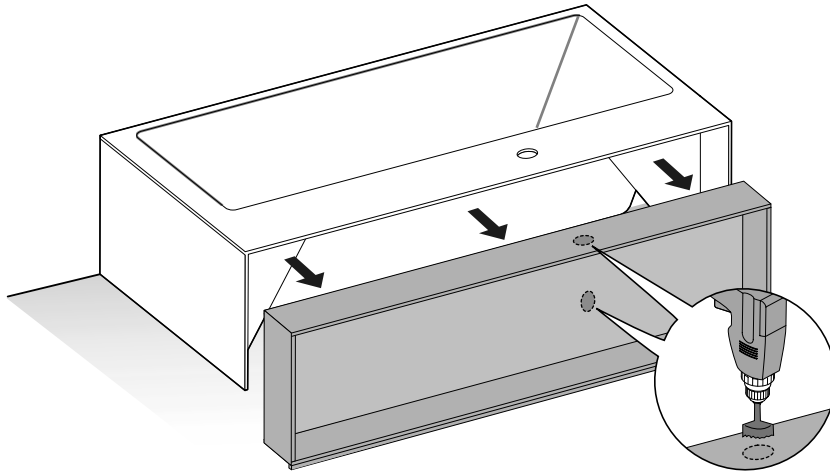


B: Deck-mount Faucet Installation (Left-Hand / Right-Hand Drain)

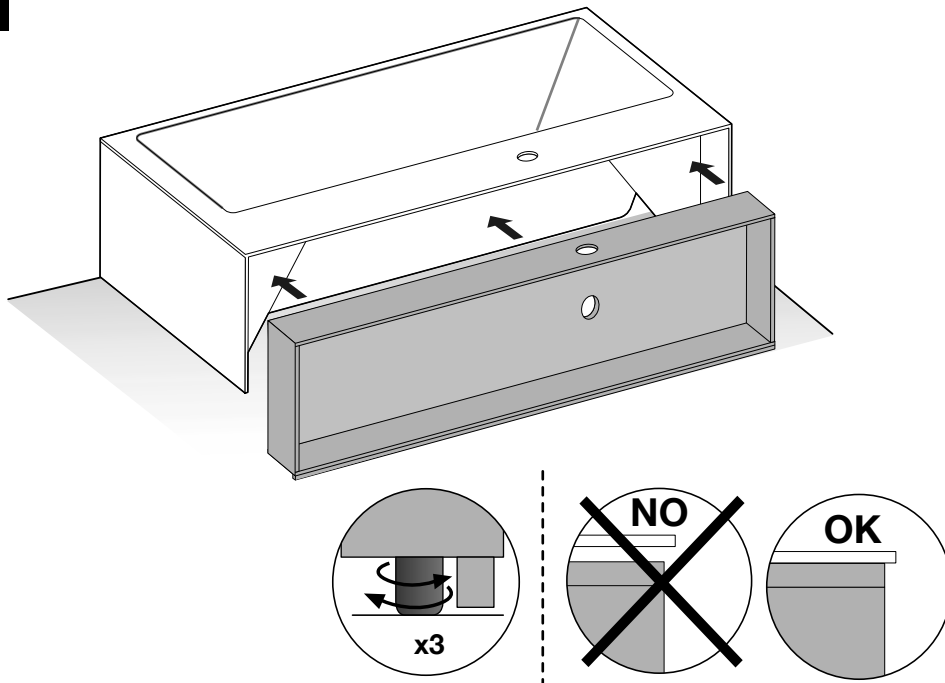


B: Deck-mount Faucet Installation (Left-Hand / Right-Hand Drain)

3

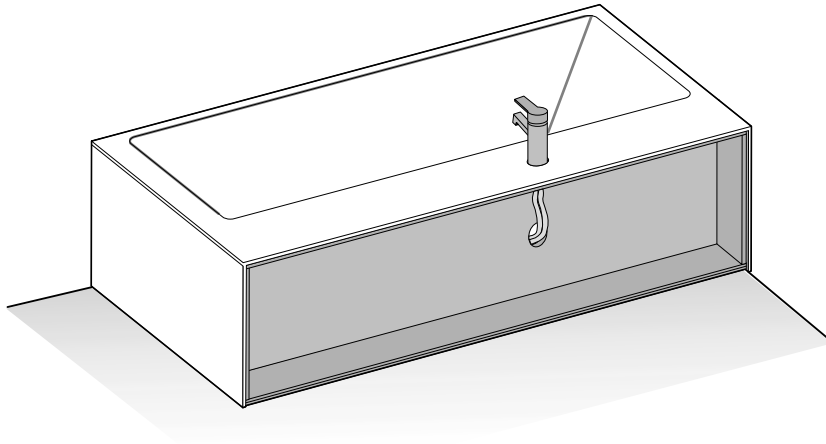


4

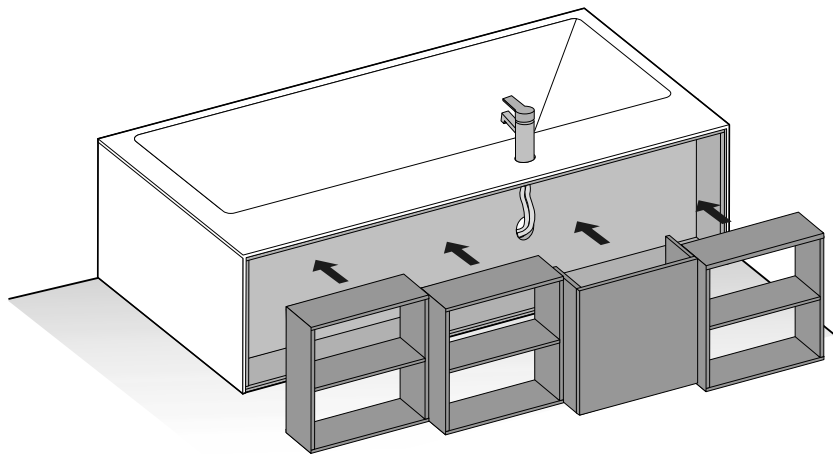


B: Deck-mount Faucet Installation (Left-Hand / Right-Hand Drain)

5

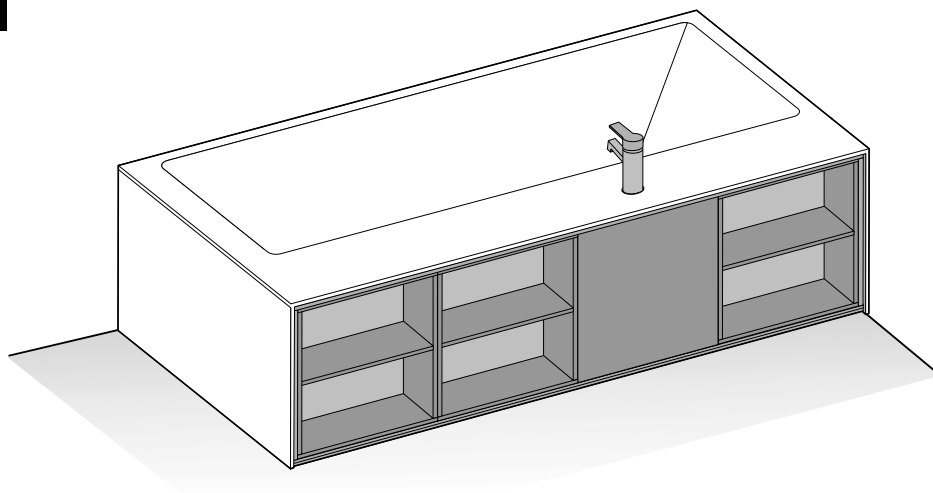


6



B: Deck-mount Faucet Installation (Left-Hand / Right-Hand Drain)

7



blu·stone™ cleaning & repair guide

blu·stone™ is Blu Bathworks' signature eco-friendly stone collection; a durable, low maintenance and hygienic material that is high pressure injection molded, non-porous and anti-microbial.

blu·stone™ products are stain, scratch and impact resistant, and easy to clean: after each use, simply wipe with a soft cloth to remove any surface dirt.

routine care

- Never expose blu·stone™ to petroleum based products, such as paint removers, oven cleaners or other solvents (Note: personal hygiene products and cosmetics will NOT damage the surface)
- We recommend that stains are removed within 24 hours
- Do not directly cut on the blu·stone™ surface
- Blu Bathworks does not recommend exceeding US/ Canada maximum hot water temperature regulations of 150°F/65°C, respectively. Exceeding stated temperatures could result in damage to blu·stone™ products

standard cleaning

For standard cleaning of both gloss and matte finishes, we recommend using widely available cleaning products such as Mr. Clean, Fantastik, VIM, CIF etc. Matte finished products may occasionally require a mildly abrasive product.

blu·stone™ matte finish:

- For more difficult stains, use a mildly abrasive cream cleanser such as Soft Scrub, Comet Soft Cleanser, CIF or VIM

blu·stone™ gloss finish:

- Do not use abrasive products or cream cleansers

scratched or damaged surfaces

blu·stone™ matte finish:

- Ensure there is no surface dirt by flushing with water
- Rub the 600-grit sanding block, provided, in a gentle circular motion
- Higher grit sandpaper may be required to blend the repaired area to match the existing product finish

blu·stone™ gloss finish:

- Ensure there is no surface dirt by flushing with water
- We recommend sanding the area starting with 600, 800 and 1200-grit sandpaper: begin with the lower number (coarser) grit followed with each higher number (finer) in ascending order
- Finish by polishing the surface using a cloth and white polishing compound for automobiles

repairs

For more extensive repairs, send a photograph of your blu·stone™ product to Blu Customer Service (technical@blubathworks.com), who will inform you as to the most appropriate methods to use.



This shelving unit is made of "Idropan". "Idropan" ensures the best defence against humidity that may affect the unit. Extra guarantee in order to protect a high-quality unit.

Ce meuble est construit avec Idropan. Idropan garantit la meilleure défense contre l'humidité à laquelle le meuble peut accidentellement être exposé. Une sécurité supplémentaire pour protéger mon meuble de qualité.

SYMBOLS FOR RECYCLABLE PACKAGING:
SYMBOLES DES EMBALLAGES RECYCLABLES:



RESY: recycling and disposal of transport packaging

RESY: recyclage et écoulement des emballages de transport



Identification mark for plastic material used in making bags and films.

Marque d'identification du matériau plastique utilisé dans la réalisation de sachets et de pellicules.

warranty

LIMITED FURNITURE RESIDENTIAL WARRANTY

Blu Bathworks® ("Blu") furniture products are warranted to the original purchaser to be free from defects in all material and workmanship during normal residential use for a period of five (5) years from the date of purchase. Blu will, at its election, repair, provide a replacement part or product, or make appropriate adjustment, subject to the terms and conditions set forth in this warranty.

LIMITED CERAMICS RESIDENTIAL WARRANTY

Blu Bathworks® ("Blu") ceramic products are warranted to the original purchaser to be free from defects in all material and workmanship during normal residential use for a period of one (1) year from the date of purchase. Blu will, at its election, repair, provide a replacement part or product, or make appropriate adjustment, subject to the terms and conditions set forth in this warranty.

LIMITED blu-stone™ RESIDENTIAL WARRANTY

Blu Bathworks® ("Blu") blu-stone™ products are warranted to the original purchaser to be free from defects in all material and workmanship during normal residential use for a period of five (5) years from the date of purchase. Blu will, at its election, repair, provide a replacement part or product, or make appropriate adjustment, subject to the terms and conditions set forth in this warranty. Blu Bathworks® does not recommend exceeding US/Canada maximum hot water temperature regulations of 150°F/65°C, respectively. Exceeding stated temperatures could result in damage to blu.stone basins and bathtubs.

LIMITED ACRYLIC BATHTUBS RESIDENTIAL WARRANTY

Blu Bathworks® ("Blu") acrylic bathtubs are warranted to the original purchaser to be free from defects in all material and workmanship during normal residential use for a period of five (5) years from the date of purchase. Blu will, at its election, repair, provide a replacement part or product, or make appropriate adjustment, subject to the terms and conditions set forth in this warranty.

LIMITED TAPWARE RESIDENTIAL WARRANTY

Blu Bathworks® ("Blu") tapware products are warranted to the original purchaser to be free from defects in all mechanical parts and polished chrome finishes during normal residential use for as long as the original purchaser owns his or her home. Blu will, at its election, repair, provide a replacement part or product, or make appropriate adjustment, subject to the terms and conditions set forth in this warranty.

LIMITED ELECTRONICA TAPWARE RESIDENTIAL WARRANTY

Blu Bathworks® ("Blu") electronica tapware products are warranted to the original purchaser to be free from defects in all electronic parts during normal residential use for a period of five (5) years from the date of purchase. Blu will, at its election, repair, provide a replacement part or product, or make appropriate adjustment, subject to the terms and conditions set forth in this warranty.

LIMITED COMMERCIAL WARRANTY

Blu Bathworks® ("Blu") products are warranted to the original purchaser to be free from defects in all material and workmanship during normal usage for a period of one (1) year from the date of purchase. Blu will, at its election, repair, provide a replacement part or product, or make appropriate adjustment, subject to the terms and conditions set forth in this warranty.

terms and conditions

This warranty applies only to Blu Bathworks® ("Blu") products distributed in North America.

This warranty is non-transferable and is for the exclusive benefit of the original purchaser of a Blu product. This warranty may be exercised by the original purchaser of a unit in a new residential development. Blu recommends using a professional plumber for all installation and repair. This warranty does not apply to products that have been installed in any manner other than as set out in Blu's printed instructions, or to products that have been altered in any way.

For further clarity, the above stated warranty does not cover or apply to damage attributable to:

- (a) neglect, misuse, abuse, accident or negligence;
- (b) normal wear and tear;
- (c) dirt or lime scale, or the use of inappropriate cleaners (such as those containing abrasives, ammonia, acids, waxes, bleaches, solvents, alcohol, or any product not recommended for chrome); and
- (d) damage caused by transportation, or improper storage.

This is the only warranty of Blu, which makes no other warranty of any kind. Blu disclaims any liability for special, incidental or consequential damages. In no event shall the liability of Blu under this warranty exceed the purchase price of the product.

PROCEDURE FOR WARRANTY SERVICE

Refer to blubathworks.com for policy and procedures relating to requests for service under the terms of this warranty.

Original proof of purchase is required. Blu is not responsible for removal or installation costs, or the costs of shipping and handling associated with any service. Repaired or replaced products or parts are warranted only for the period remaining under the initial warranty.