

**CYRANO
44" ACRYLIC
SLIPPER TUB**

Cat. No.
ATSN44



L: 43-1/2"
W: 24-1/2"
H: 28-1/2"

Water depth: 14 1/2" to top of tub
Water depth: 10-1/2" to overflow

The following is recommended for ATSN44 tubs:

- Faucet: part #4602, #4604 or #7082
- Rigid, freestanding supplies: part #4502
- Leg tub drain: part #5599LT or 5599TS



Overflow can be drilled .
With overflow drilled this tub requires drain 5599PD.
Tubs that have been drilled with overflow are "special order" and are not returnable.

Gallon Capacity without OF:	21
Gallon Capacity with OF:	17
Shipping Weight:	126 lbs.
Empty Weight:	66 lbs.
Filled Weight without OF:	275 lbs.
Filled Weight with OF:	242 lbs.

Features:

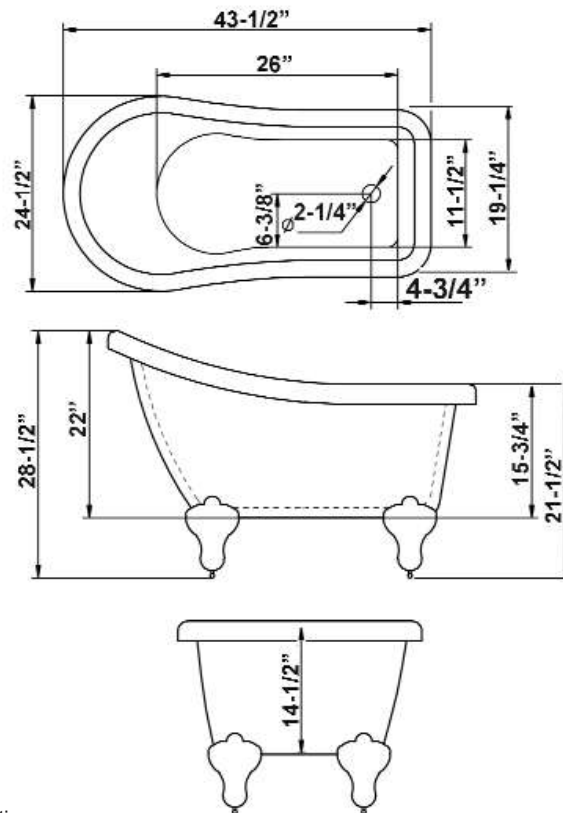
- ▶ Interior and exterior walls acrylic sheets
- ▶ Space between walls partially filled with fiberglass & resin
- ▶ No faucet holes
- ▶ No overflow
- ▶ Aluminum ball and claw feet available in 2 finishes
- ▶ Tub is thoroughly inspected before shipment
- ▶ IAPMO Certified



Feet Finishes:

- BN** Brushed Nickel
- CP** Polished Chrome

Custom Colors Available (inside of tub is always white enamel):
Painted bathtubs are considered "special order" and are not returnable
\$160 Bisque or Black \$250 Designer Color



Dimensions of fixture are nominal and specifications subject to change without notice.