

72" CARWYN COPPER BATEAU DOUBLE SLIPPER TUB

Cat. No.
COTDSN72L



L: 71-5/8"
W: 32"
H: 29-1/4"

Rim: 3" W
Water depth: 23-1/4" to top of tub

**The following is recommended for
COTDSN72L tubs without faucet holes:**

- Faucet: part #7082 or 7088
- Double offset supplies: part #4502 or 4502MC
- Freestanding filler:
part #7901, 7913, 7922 or 7952
(Supplies included with filler)



Overflow can be drilled.
With overflow drilled this tub
requires drain 5599E.
**Tubs that have been
drilled with overflow are
"special order" and
are not returnable.**

Gallon Capacity: 68
Shipping Weight: 425 lbs.
Empty Weight: 110 lbs.
Filled Weight: 674 lbs.

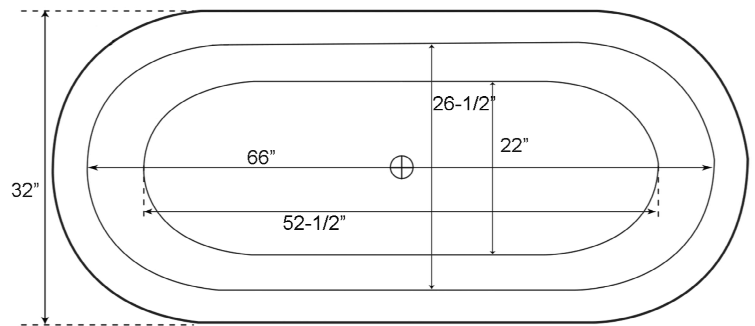
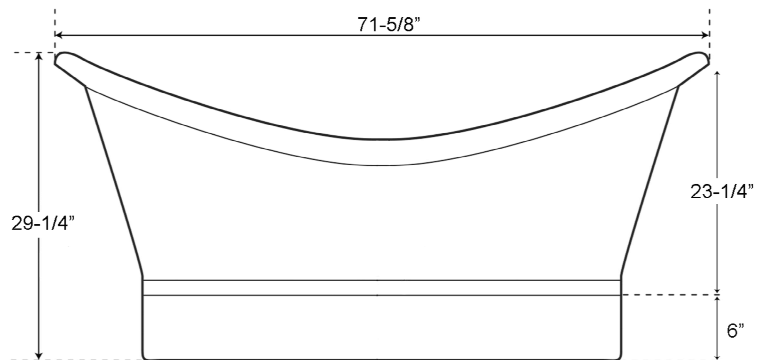
Features:

- ▶ Made of 16 gauge copper
- ▶ No faucet holes
- ▶ No overflow
- ▶ Smooth antique finish
- ▶ Hand polished
- ▶ Double Slipper
- ▶ Includes base
- ▶ Copper is a living finish and will patina over time
- ▶ Tub is thoroughly inspected before shipment
- ▶ Compatible with the Air jet system, refer to Air Kit spec for details

Tub Finishes:

SAC Smooth Antique Copper

Due to the handmade nature of this product, variations in size and finish may occur. Such variations do not constitute manufacturer defects.



Dimensions and specifications subject to change without notice.

01/06/2026

P 847•244•1234

www.barclayproducts.com