

# 66" BAYLIS COPPER DOUBLE SLIPPER TUB

Cat. No.  
COTDSN66S



L: 66"  
W: 32-1/8"  
H: 30-5/8"

Water depth: 24-5/8" to top of tub

## The following is recommended for COTDSN tubs without faucet holes:

- Faucet: part **#7082 or 7088**
- Double offset supplies: part **#4502 or 4502MC**
- Freestanding filler: part **#7901, 7913, 7922 or 7952**  
(Supplies included with filler)



Overflow can be drilled.  
With overflow drilled this tub  
requires drain **5599E**.  
**Tubs that have been  
drilled with overflow are  
"special order" and  
are not returnable.**

Gallon Capacity:	63
Shipping Weight:	225 lbs.
Empty Weight:	115 lbs.
Filled Weight:	638 lbs.

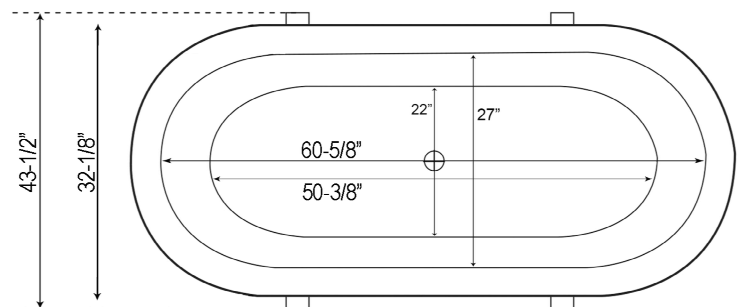
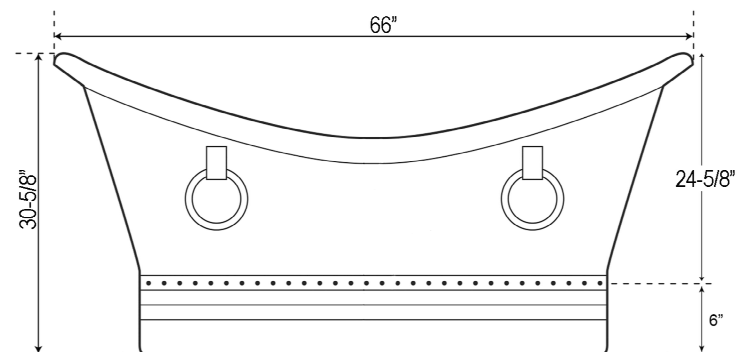
## Features:

- ▶ Made of 16 gauge copper  
(Copper is a living finish and will patina over time)
- ▶ Hammered antique copper inside and out
- ▶ No faucet holes
- ▶ No overflow
- ▶ Extra wide
- ▶ Rim is 2-5/8"
- ▶ Decorative hammered copper rings
- ▶ Hand polished
- ▶ Includes base
- ▶ Compatible with the Air jet system, refer to Air Kit spec for details

## Tub Finishes:

AC Hammered Antique Copper

Due to the handmade nature of this product, variations in size and finish may occur. Such variations do not constitute manufacturer defects.



Dimensions and specifications subject to change without notice.

01/06/2026

P 847•244•1234

www.barclayproducts.com