

**REEDLEY
COPPER DOUBLE
ROLL TOP TUB**

Cat. No.
COTDR7H61K-AC



L: 59- $\frac{7}{8}$ "
W: 31- $\frac{3}{4}$ "
H: 26- $\frac{3}{8}$ "

Rim: 3"
Water depth: 20" to top of tub

**The following is recommended for
COTDR7H61K tubs with deck holes:**

- Rim-mounted faucet: part #4601 or 4603
- Straight bath supplies: part #5577
- Leg tub drain: part #5599

Gallon Capacity:	65
Shipping Weight:	325 lbs.
Empty Weight:	104 lbs.
Filled Weight:	644 lbs.



Overflow can be drilled.
With overflow drilled this tub
requires drain 5599E.
**Tubs that have been
drilled with overflow are
"special order" and
are not returnable.**

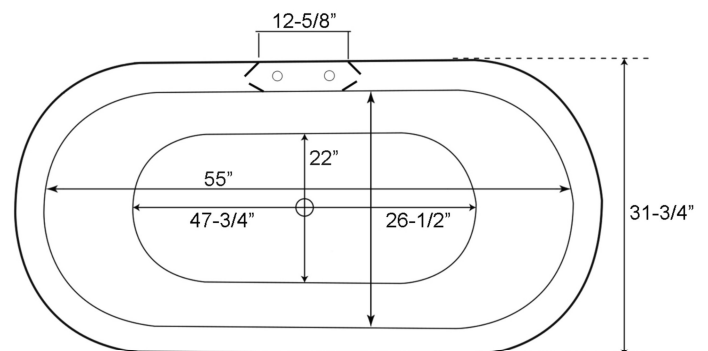
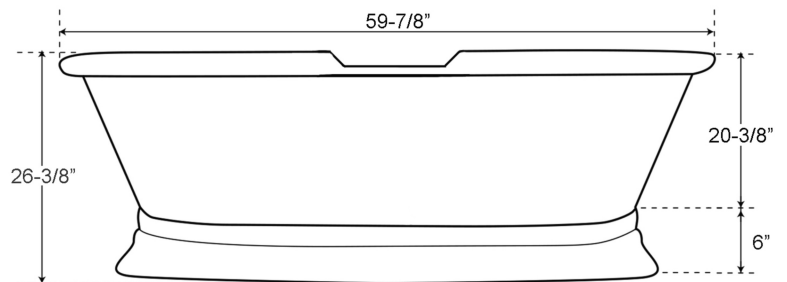
Features:

- ▶ Made of 16 gauge copper
(Copper is a living finish and will patina over time)
- ▶ Hammered antique copper inside and out
- ▶ Hand polished
- ▶ No overflow
- ▶ Double roll top with tap deck
- ▶ 7" deck holes
- ▶ Includes base
- ▶ No faucet holes
- ▶ Compatible with the Air jet system, refer to Air Kit spec for details

Tub Finishes:

AC Hammered Antique Copper

Due to the handmade nature of this product, variations in size and finish may occur. Such variations do not constitute manufacturer defects.



Dimensions and specifications subject to change without notice.

01/06/2026

P 847•244•1234

www.barclayproducts.com