

ISABELLA 59" CAST IRON BATEAU TUB

Cat.No.
CTBATN59-SAC



L: 59"
W: 29-1/2"
H: 26"

Water depth: 20" to top of tub
Water depth: 16-1/2" to overflow
Overflow hole diameter: 2"

The following is recommended for CTBATN59-SAC:

- Faucet: part#4602, 4604, or 4022
- Rigid, freestanding supplies: part #4502
- Freestanding filler: part #7934, 7952, or 7918 (Supplies included with filler)
- Leg tub drain: #5599

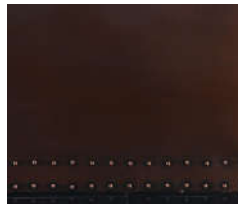
Note

To prevent the accumulation of standing water under your tub base we recommend using a bead of silicone between the base and the floor.

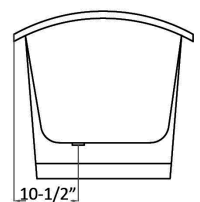
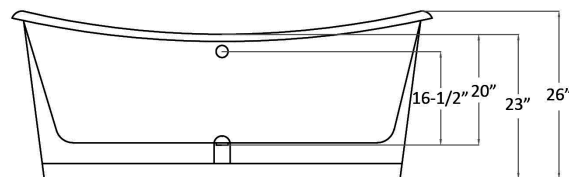
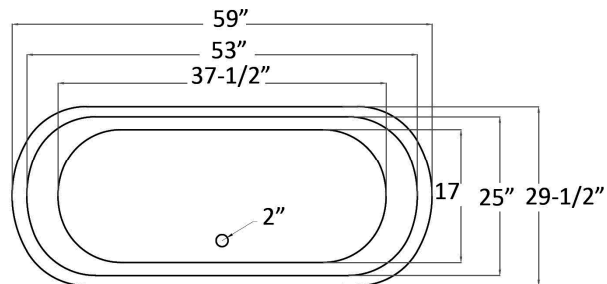
Gallon Capacity with OF: 35
Shipping Weight: 563 lbs
Empty Weight: 503 lbs.
Filled Weight with OF: 794 lbs.

Features:

- ▶ Cast Iron tub wrapped in metal skirt
- ▶ Smooth antique copper finish
- ▶ No faucet holes
- ▶ Available with or without overflow
- ▶ Non-returnable
- ▶ Tub is thoroughly inspected before shipment



This tub is cast iron with a smooth antique copper finish highlighting the beauty of the natural metal.



Dimensions of fixture are nominal and specifications subject to change without notice.

02/07/2020

P 847•244•1234 | www.barclayproducts.com