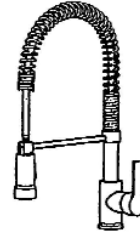
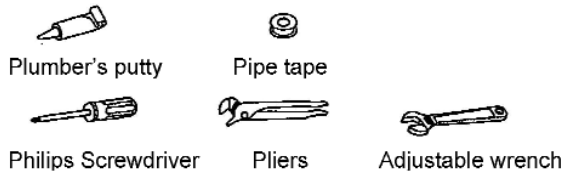




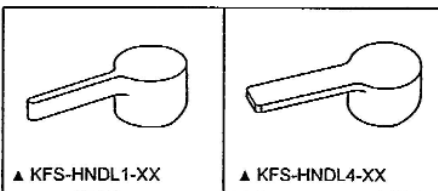
Single Hole Kitchen Faucets KFS416, 417, 418

INSTALLATION INSTRUCTIONS

Tools You Will Need:



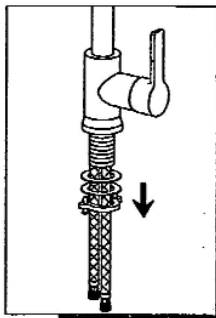
Available Handle Options



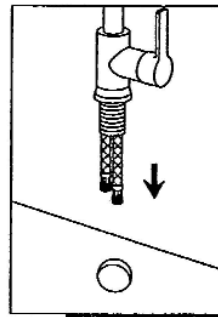
Available Spray Options



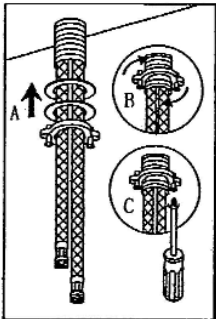
INSTALLATION STEPS:



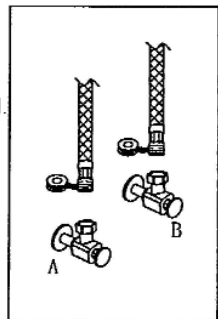
1. Remove the mounting hardware from the faucet.



2. Install faucet through center hole.



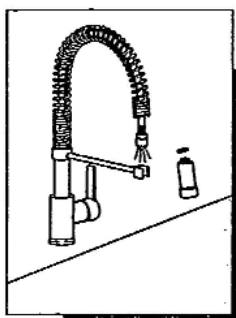
3. Re-assemble the mounting hardware onto the shank, use the philips screwdriver for final tightening after spout is aligned.



4. Connect to water supply

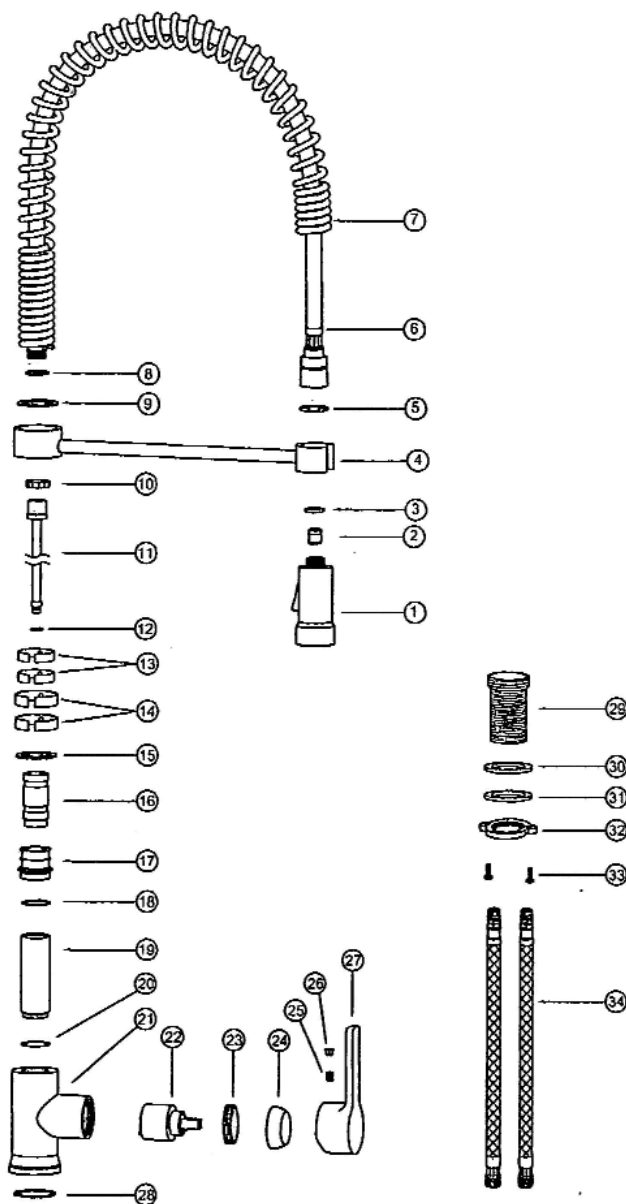


Single Hole Kitchen Faucets KFS416, 417, 418



5. After installing faucet, remove spray assembly and open the hot and cold water supplies. Check for leaks. Turn on faucet handle for one minute to flush debris from faucet. Close the handles and re-assemble the spray.

Exploded Drawing



34	Braided Hose	2
33	Screw	2
32	Lock Nut	1
31	Metal Gasket	1
30	Rubber Gasket	1
29	Shank	1
28	O-ring	1
27	Handle	1
26	Button	1
25	Screw	1
24	Trim Cap	1
23	Cartridge Nut	1
22	Ceramic Disc Cartridge	1
21	Faucet Body	1
20	O-ring	1
19	Connect Sleeve	1
18	Plastic Washer	1
17	Connector	1
16	Connector	1
15	Plastic Washer	1
14	Plastic Washer	2
13	Plastic Washer	2
12	O-ring	1
11	Connect Tube	1
10	Lock Nut	1
9	Plastic Washer	1
8	Gasket	1
7	Spring	1
6	Spray Hose	1
5	O-ring	1
4	Spray Bracket	1
3	Gasket	1
2	Check Valve	1
1	Spray Head	1
No.	Part Description	Quantity