

# SUBMITTAL DATA SHEET

## Dewatering Pumps

Electric & DC Powered | Engine Driven

### 2" & 3" Self Priming Engine Driven | Trash Pump

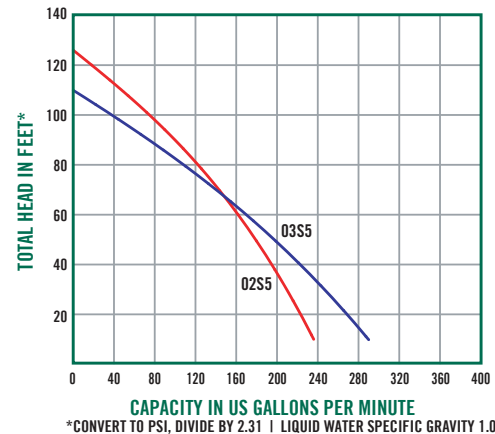
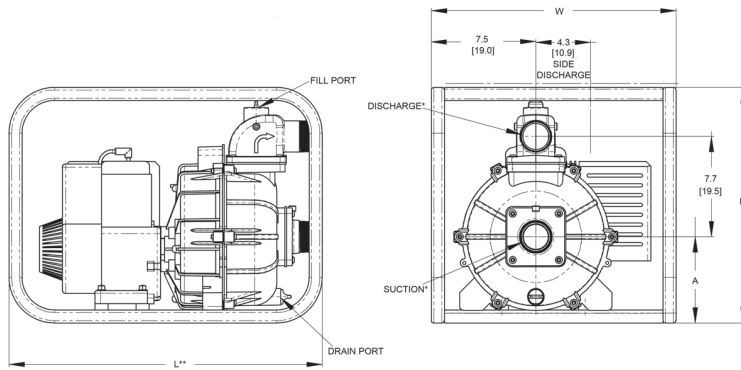


Model 03S5XHR

A.Y. McDonald high-volume self-priming centrifugal trash pumps come standard with a ductile iron impeller to resist abrasion and one tool serviceability for cleanout. All pumps feature aluminum housing, cast iron wear parts, built-in check valve, suction strainer and heavy duty steel frame. Standard flanges with male NPT threads. A.Y. McDonald engine driven trash pumps are reliable, cost effective, and low maintenance.

#### Application:

Dewatering and trash applications with solids handling capability. For use with non-flammable liquids which are compatible with pump component materials.



#### 2" Trash Pumps

Model No.	Driver Type & HP	Shaft Seal	Tank Size (Gal/Lrt)	Run Time (Hours)	Mounting	Ship Wt. (Lbs)	L**	W	H	Suct*	Disch*
02S5XAR	B&S CP650 5 HP	Viton® / Sic / Sic**	0.87 / 3.3	1.3	Roll Cage	90	24	19.5	19.9	2.00	2.00
02S5XHR	Honda GX160, 5 HP	Viton® / Sic / Sic**	0.82 / 3.1	2.0	Roll Cage	90	24	19.5	19.9	2.00	2.00
02S5XZR	Hatz Diesel 5 HP	Viton® / Sic / Sic**	0.79 / 3.0	2.7	Roll Cage	115	24	19.5	19.9	2.00	2.00

Solids Handling - 1" diameter

#### 3" Trash Pumps

Model No.	Driver Type & HP	Shaft Seal	Tank Size (Gal/Lrt)	Run Time (Hours)	Mounting	Ship Wt. (Lbs)	L**	W	H	Suct*	Disch*
03S5XAR	B&S CP650 6.5 HP	Viton® / Sic / Sic**	0.87 / 3.3	1.3	Roll Cage	100	24	19.5	19.9	3.00	3.00
03S5XHR	Honda GX160, 5.5 HP	Viton® / Sic / Sic**	0.82 / 3.1	2.5	Roll Cage	100	24	19.5	19.9	3.00	3.00
03S5XZR	Hatz Diesel 4.8 HP	Viton® / Sic / Sic**	0.79 / 3.0	2.7	Roll Cage	120	24	19.5	19.9	3.00	3.00

Solids Handling - 1 1/4" diameter

#### SUBMITTAL INFORMATION

- Cast aluminum with cast iron wear parts
- Available with Briggs & Stratton, Honda gasoline or Hatz diesel engines
- Removable suction and discharge port sizes 2" and 3"
- Discharge male NPT port rotates 90° increments
- Maximum flow: 290 GPM
- Maximum head: 125'
- Maximum lift up to 26'

- Solids handling up to 1 1/4" diameter
- Silicon-carbide seal with dry run survivability / Viton® mechanical seal
- Easy clean out with one tool serviceability
- Optional Viton® elastomers
- Optional wheel kit
- Maximum temperature 180°F

**WARNING:** Do not use in explosive atmosphere or for pumping volatile flammable liquids.

\*Viton® is a registered trademark of DuPont.

\*\*SIC = Silicon Carbide

NO-LEAD: The weighted average of the wetted surface of this no-lead product contacted by consumable water contains less than one quarter of one percent (0.25%) lead.



A.Y. McDonald Mfg. Co.  
P.O. Box 508  
Dubuque, IA 52004-0508

Toll Free: 1-800-292-2737  
Fax: 1-800-832-9296  
Hours: 7:00 a.m. - 5:00 p.m., CST

sales@aymcdonald.com  
www.aymcdonald.com

A.Y. McDonald considers the information on this assembly drawing correct when published. Item and option availability, including specifications, are subject to change without notice.

Submitted by: