

INSTALLATION MANUAL

Intelligent Toilet

TS026-3

Thank you for placing your confidence in us.

Thank you for buying our products. You can learn from this manual about the use of products and other important issues before initial start-up.

Please follow the instructions in this manual carefully.

Please keep the manual properly stored for future reference.

Regarding future product updates, the product is subject to change without prior notice.

Illustrations in this manual serve as visual demonstration.

We hope you can learn how to use the product through this manual.

In order to guarantee that the Product will always function optimally, and to ensure your personal safety, please do the following:

Read these operating instructions carefully before initial start-up and follow these instructions!

CONTENT









Safety	1
Pre-installation Confirmation	3
Dimension	3
Standard Delivery Contents	3
Tools	3
Installation	4
Install Preparations	4
Intelligent Toilet Installation	5
Battery Installation for Remote Control	6
Bracket Installation	7
Test	8

SAFETY

Installation qualification requirements: Installation must be carried out by qualified professionals who passed the professional training. Before installation, please read the following safety instructions carefully and the safety instructions recorded in the user's manual to install the product correctly.

Installation should be based on the steps documented in this manual. We will not take responsibility for the negative consequences caused by changing construction method without authorization.

SYMBOLS DESCRIPTION

Symbol	Description	Symbol	Description
	Danger! High risk, lethal hazards, severe injuries		Inspection
	Warning! Medium risk, severe injuries		Duration
	Caution! Low risk, minor injuries		No leakage
	Tips		Please dispose of waste according to relevant regulations of the state

DANGER!

To lower the risk of electrocution

- This device is an electric appliance of class I and must be connected to a grounding system with the relevant regulations of the state.
- The socket circuit connected to the product must have electrical leakage protector which rated current not exceeding 30mA.
- Socket should be water-proof or with water-proof accessories, ensure that and plugs are located at least 600 mm horizontally from the shower room or bathtub.
- Please unplug unit immediately and contact your dealer or call Service Hotline for replacement if power supply cord becomes damaged. It must be replaced by the manufacturer, its service agent or similarqualified persons.
- Indoor wiring regulations should be followed during circuit construction.
- The device is an electrical apparatus and thus shall not be used in a wet or humid environment. If the device is used in a bathroom, an exhaust fan or air vent shall be installed to ensure sufficient airflow.

WARNING!

To lower the risk of burns, electrocution, fire, or injury to persons

- Do not allow to use a loose socket.
- Do not allow to handle the power cable or plug with wet hands.

SAFETY



WARNING!

- Do not allow the power cable or plug to be pulled randomly.
- Do not allow to place open flames, candles, cigarettes, or similar objects on or by the toilet.
- Do not place heavy objects on the seat or cover .
- Do not step on product.



CAUTION!

To lower the risk of malfunction or damage of product

- Do not allow to use industrial water, circulating water or waste water as the source of the product. Please use the water source that meets the standard of living and drinking.
- Please comply with all local regulations on water supply and drainage, otherwise it may lead to a safety hazard.
- The power voltage is 120V~,60Hz. Use the specified power supply only.
- Please use the product under the conditions: water pressure range: 0.1(Dynamic)-0.75MPa; water volume \geq 20L/min.
- Water temperature range: 4-35°C . Do not install the intelligent toilet in rooms where the temperature will be less than 4 °C(39°F).
- Do not allow the inlet-hose and power cord to be severely pinched, bent, or kinked.
- Do not allow to hit heavily against the ceramics.
- Do not allow to place the product upside down.
- Do the waterproofing for the ground and wall before installation.
- Since ceramics can be easily damaged it should be handled with care during installation, also do not tighten the nuts excessively to avoid damage to the product. The bottom part of the toilet shall not be fixed and installed by using cement.
- Installation must use original fittings. Do not allow to reuse old hose-sets, otherwise they may damage the product.
- Remove the anti-static film only after the installation, this will prevent scratch on the product.
- After installation, firstly connect the water supply and then electric power supply.
- Please do not expose this product under sunshine, it could cause color fading or unstable temperature on the seat.
- During movement or installation process, please hold body of product, if hold cover or seat only, it may cause product separation or injury.
- When product moved from cold to hot place, there would be condensation phenomenon. Please place 12 hours before using.

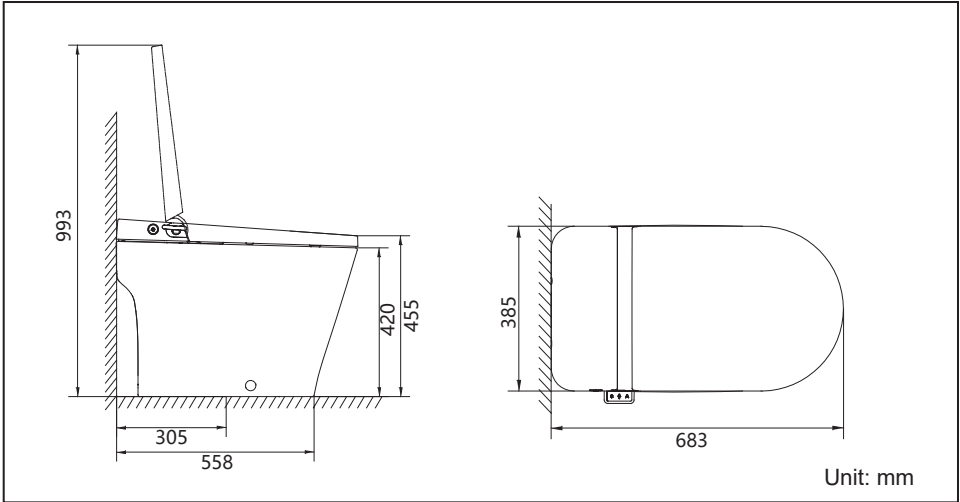


KIND REMINDER!

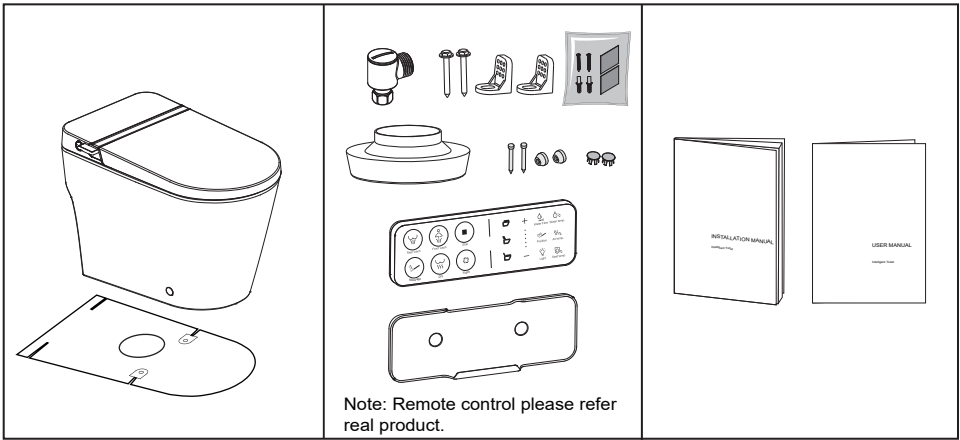
- This product will do 100% water test before leaving factory to ensure product quality, so when product arrive customer side for installation, a little water left inside dripping out is a normal phenomenon.

PRE-INSTALLATION CONFIRMATION

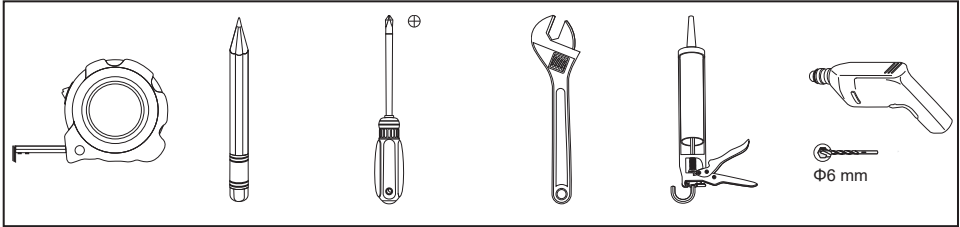
DIMENSION



STANDARD DELIVERY CONTENTS



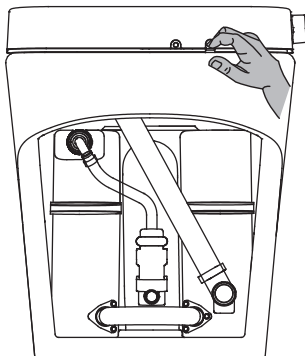
TOOLS



■ INSTALL PREPARATIONS

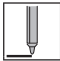
-
- Technical drawing illustrating the layout and dimensions of a drainage system. The drawing shows a plan view of a drainage pit and a manhole, and a side view of the manhole structure.
- Plan View Dimensions:**
- Pit Distance:** The distance between the center of the drain and the center of the pit.
 - Drain $\Phi 110$:** The diameter of the drain pipe.
 - 5 ~ 10:** The depth of the drain pipe.
 - * ≥ 1200 :** The minimum distance between the center of the drain and the center of the pit.
 - * ≥ 500 :** The minimum distance between the center of the pit and the center of the manhole.
- Side View Dimensions:**
- * 250:** The height of the manhole structure above the ground level.
 - * 300:** The distance from the center of the manhole to the center of the pit.
 - * 390:** The height of the manhole structure above the ground level.
 - G $\frac{1}{2}$:** The ground level.

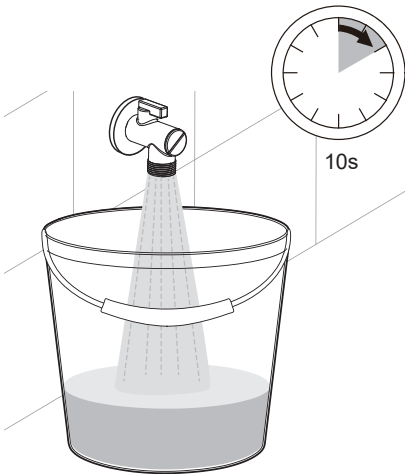
6. Please press the pushrod before installation to ensure the internal protection switch is in the reset state.



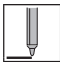
INSTALLATION

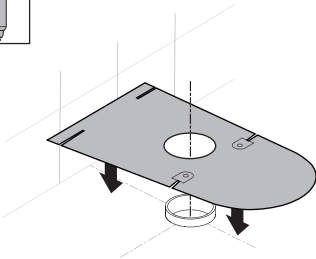
INTELLIGENT TOILET INSTALLATION

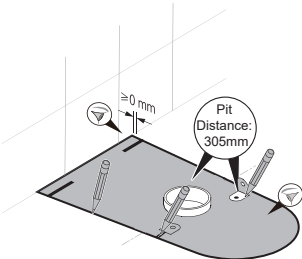
1



10s


2

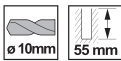


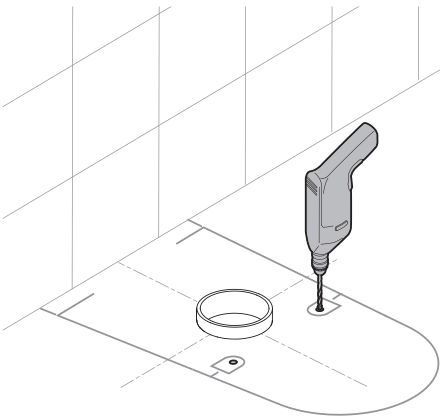


≥ 0 mm

Pit Distance: 305mm


 Please ensure that the distance from the wall meets the requirements, so that the repair work can proceed normally.

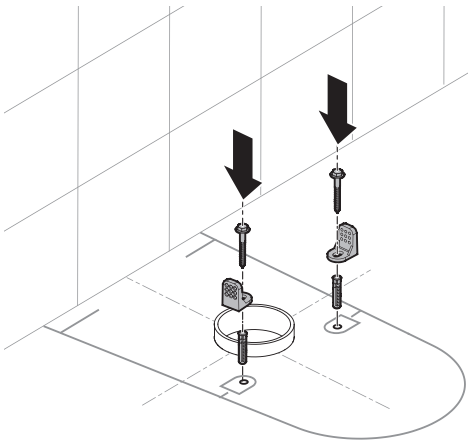
3



ø 10mm

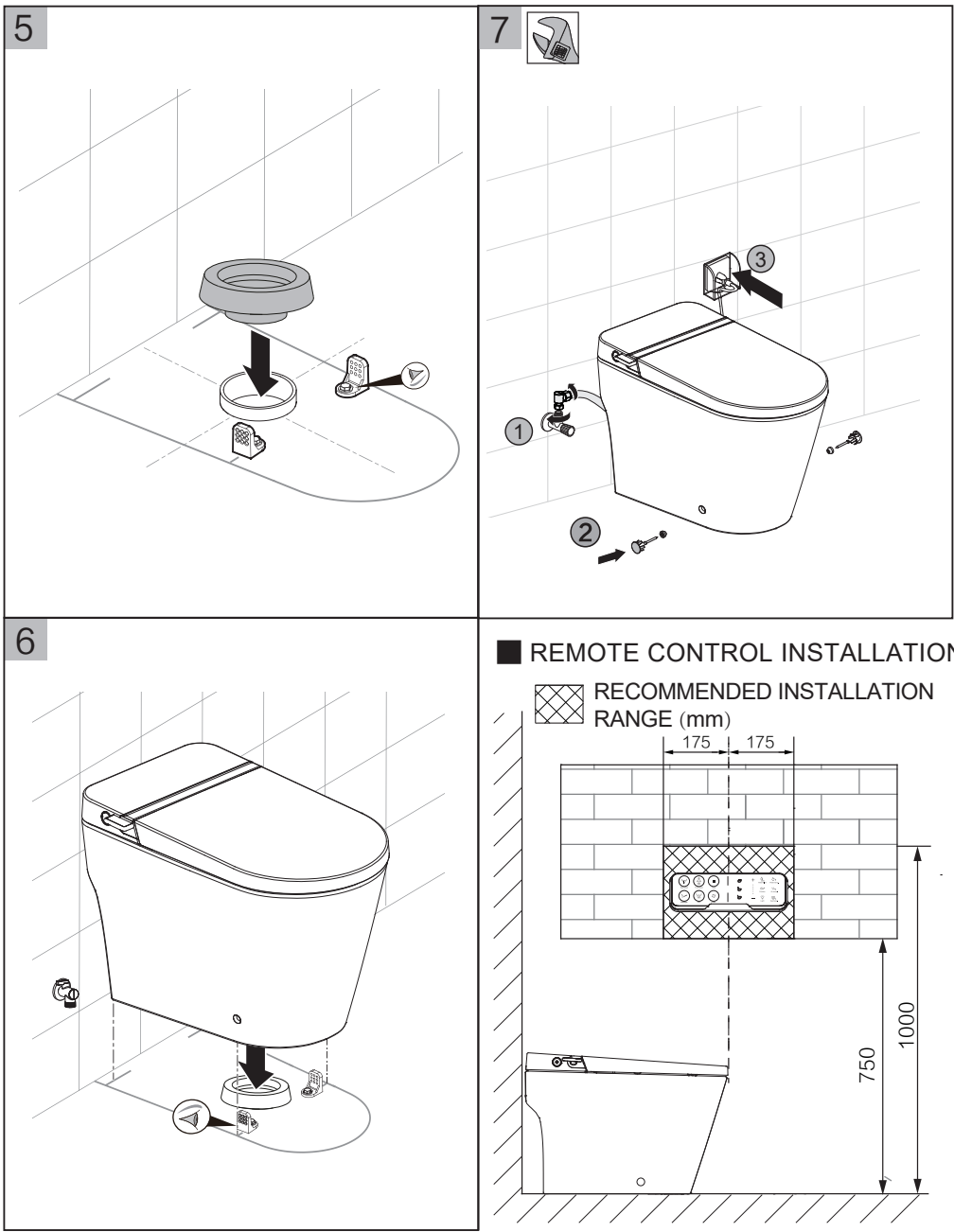
55 mm

4



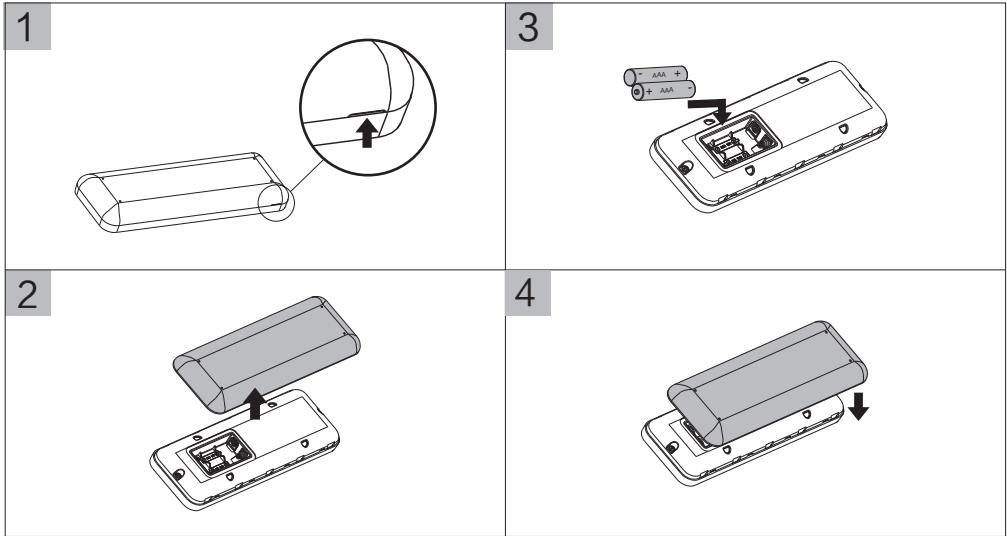
INSTALLATION

INTELLIGENT TOILET INSTALLATION

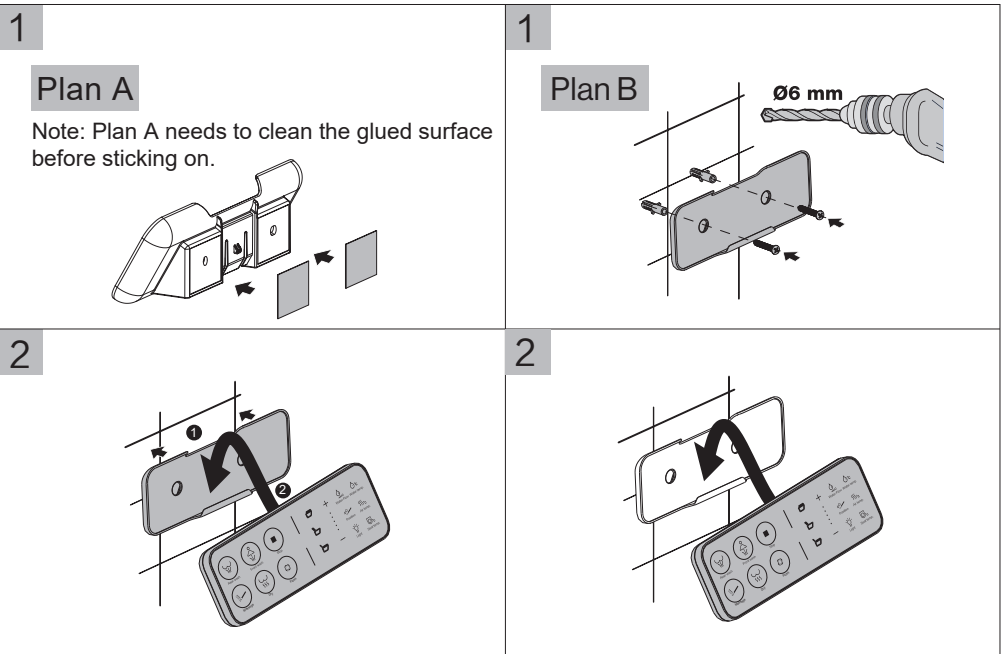


INSTALLATION

BATTERY INSTALLATION FOR REMOTE CONTROL


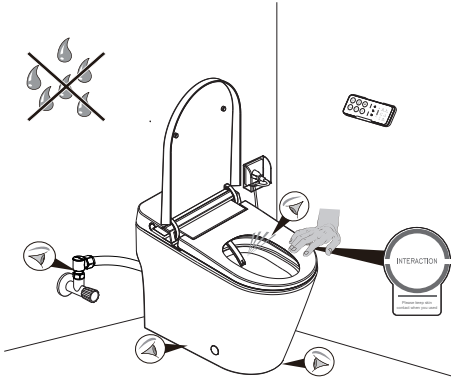

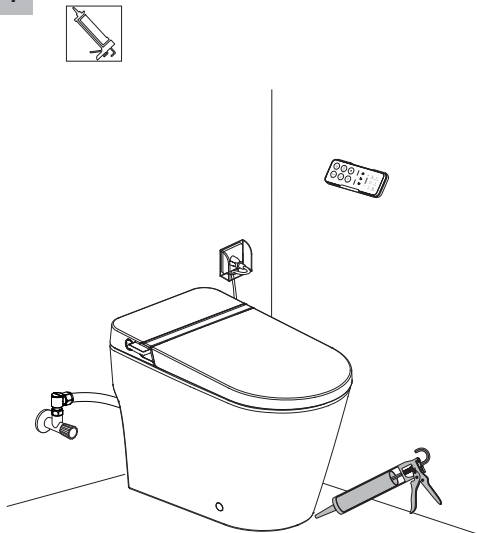


BRACKET INSTALLATION



INSTALLATION

■ TEST

<div data-bbox="58 175 103 223">1</div> <div data-bbox="132 403 327 598"></div> <div data-bbox="356 464 484 539">ON</div>	<div data-bbox="560 175 604 223">3</div> <div data-bbox="573 263 1024 641"></div> <div data-bbox="573 683 1050 783"><p>! Please cover the spray nozzle during test to avoid water spraying to human body directly.</p></div>
<div data-bbox="58 826 103 874">2</div> <div data-bbox="132 1054 327 1249"></div> <div data-bbox="356 1114 484 1189">ON</div>	<div data-bbox="560 826 604 874">4</div> <div data-bbox="573 858 1050 1393"></div>

Axent Intelligence Inc.

www.axentbath.us

support@axentproducts.com

1-800-769-4857