

**AXOR One**  
**Widespread Faucet Select 170, 1.2 GPM, without Pop-up Drain**  
 Finish: **chrome** Part no. : **48070001**



**Description**

**Features**

- Spout height: 7 Inch
- Handle variant: Select
- Swivel range 120°
- Spray modes: aerated spray
- Max. flow: 1.2 GPM (4.5 L/Min)
- Right handle: Select cartridge with temperature control
- Left handle: volume control

**Item details**

List Price \$ 1,538.00

**Technology**



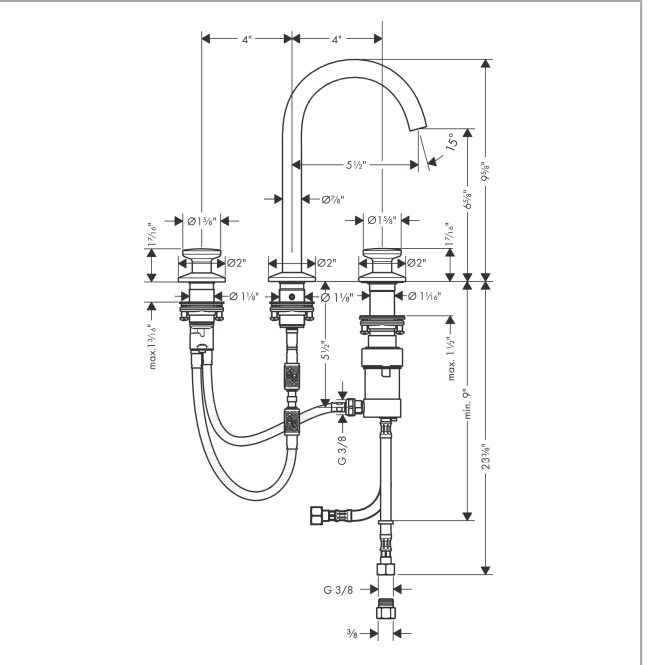
**Compliance / Sustainability**



**Product image**



**Scale drawing**

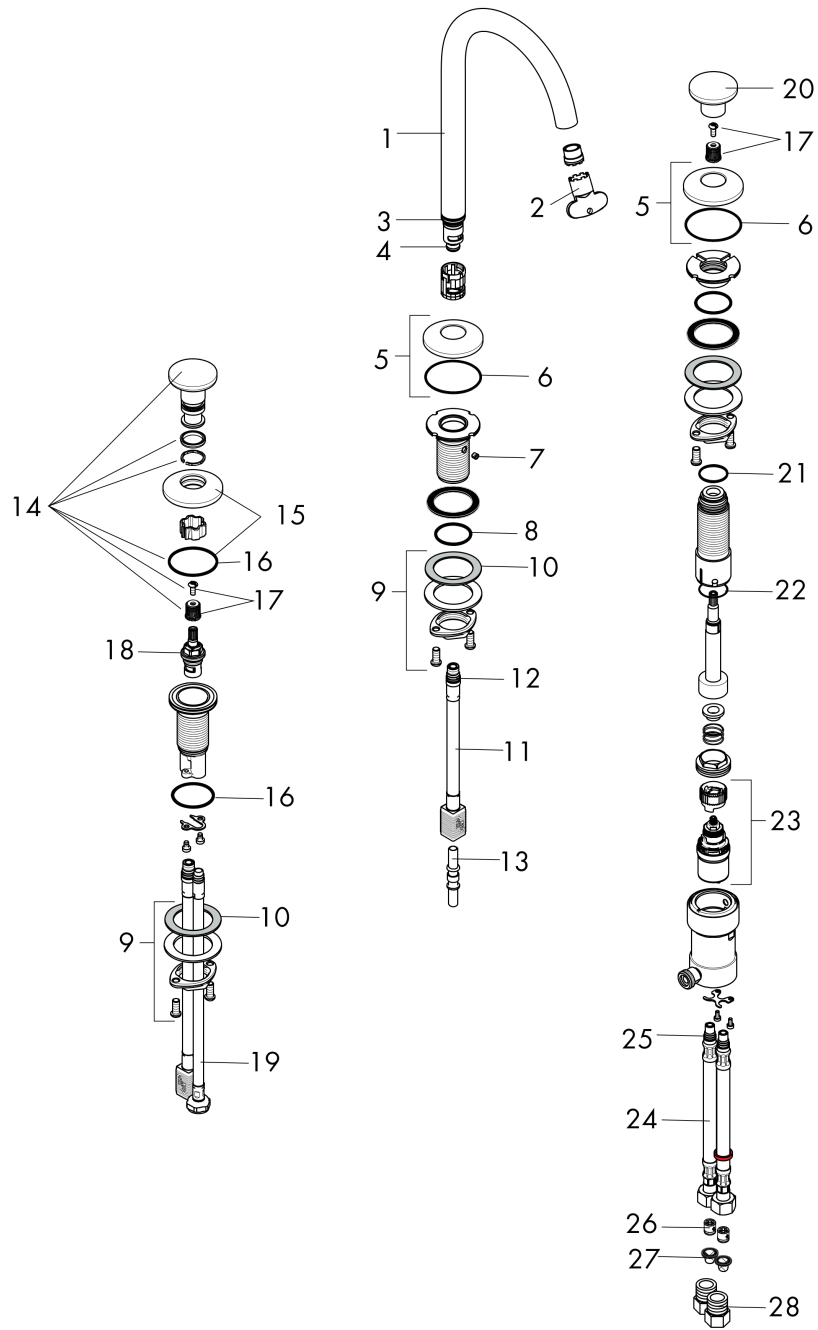


**AXOR One**  
**Widespread Faucet Select 170, 1.2 GPM, without Pop-up Drain**  
 Finish: **chrome** Part no. : **48070001**



Exploded drawing

Year of production: >08/21



**AXOR One**  
**Widespread Faucet Select 170, 1.2 GPM, without Pop-up Drain**  
 Finish: **chrome** Part no. : **48070001**



## Spare parts list

Year of production: >08/21

Pos.	Description	Part no.	Price	PU
1	spout cpl.	94100000	-	1
2	special tool	98987000	-	1
3	O-ring 18x1,5	98231000	-	1
4	O-ring 9x1,5	98117000	-	1
5	escutcheon for handle	94893000	-	1
6	O-Ring 46x2	98195000	-	1
7	hollow set screw M5x5	98446000	-	1
8	O-ring 28x2,5	98209000	-	1
9	null	92909000	-	1
10	lever collar	97548000	-	1
11	null	92914000	-	1
12	O-ring 8x1,75	97827000	-	1
13	coupling set	94264000	-	1
14	handle	94263000	-	1
15	escutcheon for handle	94162000	-	1
16	null	92907000	-	1
17	handle fixing set	98932000	-	1
18	shut off unit right closing	98817000	-	1
19	connection hose 450 mm M8x0,75 G3/8	97206000	-	1
20	handle	93997000	-	1
21	O-Ring 22x2	98185000	-	1
22	O-ring 23x1,5	92287000	-	1
23	cartridge, assy	92529000	-	1
24	connection hose 450 mm M8x0,75 G3/8	93405000	-	1
25	O-ring 7x1,5	98422000	-	1
26	non return valve DW 10	96456000	-	1
27	filter packing	95291000	-	1
28	adapter for connection hose	88802000	-	1