

**AXOR One**  
**Single-Hole Faucet Select 260, 1.2 GPM, without Pop-up Drain**  
 Finish: **chrome** Part no. : **48030001**



**Description**

**Features**

- Handle variant: Select
- Spray modes: aerated spray
- Max. flow: 1.2 GPM (4.5 L/Min)
- Select cartridge for easy, intuitive operation: Push handle to turn water on and off, and turn to adjust temperature

**Item details**

List Price \$ 1,384.00

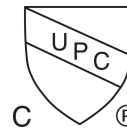
**Technology**



**Design awards**



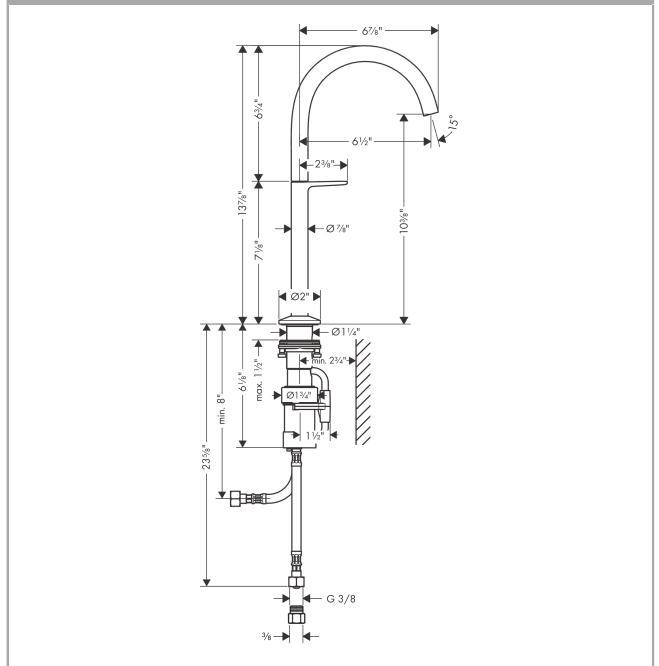
**Compliance / Sustainability**



**Product image**



**Scale drawing**

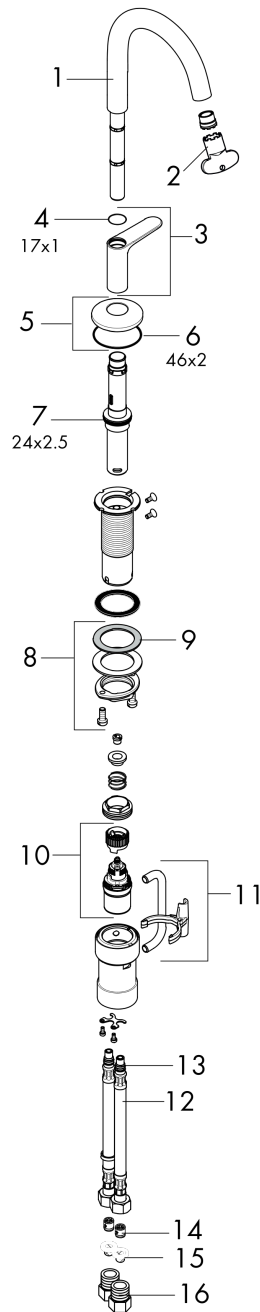


**AXOR One**  
**Single-Hole Faucet Select 260, 1.2 GPM, without Pop-up Drain**  
 Finish: **chrome** Part no. : **48030001**



Exploded drawing

Year of production: >08/21



**AXOR One**  
**Single-Hole Faucet Select 260, 1.2 GPM, without Pop-up Drain**  
 Finish: **chrome** Part no. : **48030001**



## Spare parts list

Year of production: >08/21

Pos.	Description	Part no.	Price	PU
1	spout cpl.	94237000	-	1
2	special tool	98987000	-	1
3	handle	94239000	-	1
4	O-ring 17x1	94259000	-	1
5	escutcheon	93998000	-	1
6	O-Ring 46x2	98195000	-	1
7	O-ring 24x2,5	98145000	-	1
8	fixing set (Ø 32)	13961000	-	1
9	lever collar	97548000	-	1
10	cartridge, assy	92529000	-	1
11	connection angel	94262000	-	1
12	connection hose 450 mm M8x0,75 G3/8	93405000	-	1
13	O-ring 7x1,5	98422000	-	1
14	non return valve DW 10	96456000	-	1
15	filter packing	95291000	-	1
16	adapter for connection hose	88802000	-	1