

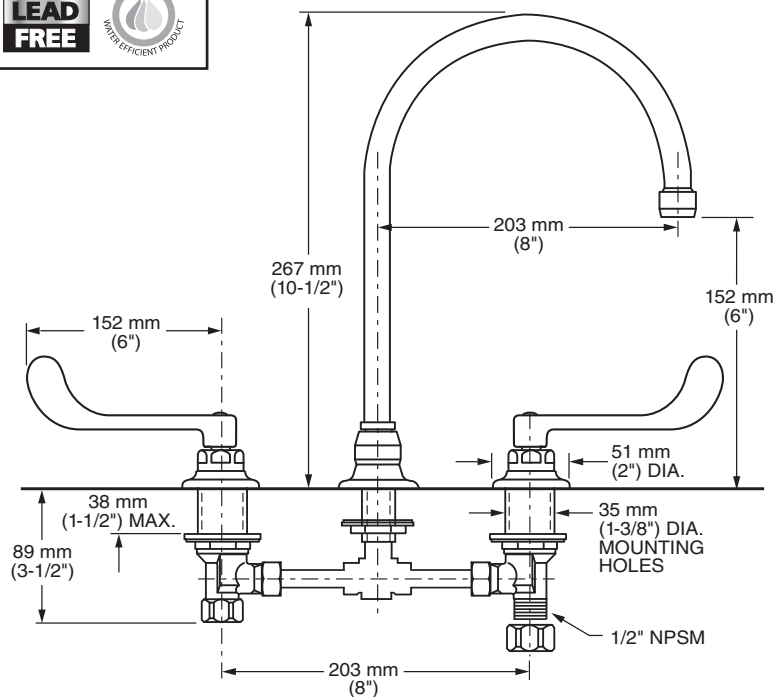
TWO-HANDLE 8" WIDESPREAD LAVATORY FAUCET
6" WRIST BLADE HANDLES AND RIGID/SWIVEL GOOSENECK SPOUT WITH 8" REACH



MODEL NUMBER:

❑ 6540.168 Widespread Lavatory with 6" Wrist Blade Handles

1.5 gpm Pressure compensating aerator. Field-convertible rigid/swivel gooseneck spout with 8" reach. Vandal-resistant 6" wrist blade handles. Less drain and pop-up hole.



GENERAL DESCRIPTION:

Durable cast brass construction. Cast brass valve bodies with 8" rigid copper connection with compression fittings. 1/2" male threaded inlet shanks with brass coupling nuts. 1/4 turn ceramic disc valve cartridges. Field-convertible rigid/swivel gooseneck spout with 8" reach. Vandal-resistant 6" wrist blade handles with blue & red color indexes.

PRODUCT FEATURES:

Pressure Compensating Aerator: Provides a constant water flow of 1.5 gpm throughout the pressure range.

Solid Brass Construction: Durable. Excellent in high use applications. Ideal for prolonged contact with water.

Ceramic Disc Valve Cartridges: Assure a lifetime of drip-free performance.

Field-Convertible Rigid/Swivel Spout with 8" Reach: Easily converted in the field.

Lead Free: Faucet contains ≤ 0.25% total lead content by weighted average.

SUGGESTED SPECIFICATION

Two handle widespread lavatory faucet shall feature cast brass valve bodies with 8" rigid copper connection. Shall feature water-conserving 1.5 gpm/5.7 L/min. pressure compensating aerator. Vandal-resistant 6" wrist blade handles. Shall also feature 1/4 turn washerless ceramic disc valve cartridges. Shall also feature convertible rigid/swivel spout. Fitting shall be American Standard Model # 6540.168.002.



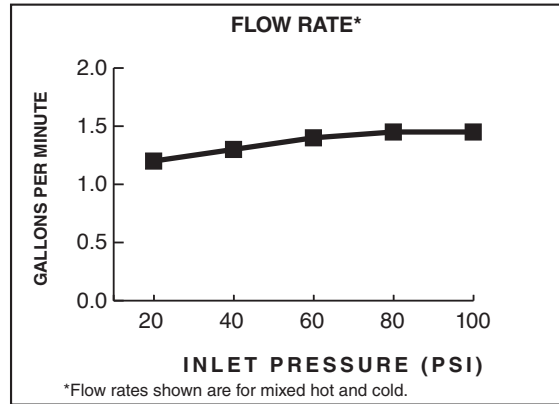
MONTERREY®

TWO-HANDLE 8" WIDESPREAD LAVATORY FAUCET
6" WRIST BLADE HANDLES AND RIGID/SWIVEL GOOSENECK SPOUT WITH 8" REACH

CODES AND STANDARDS

These products meet or exceed the following codes and standards:

- ASME A112.18.1**
- CSA B125.1**
- NSF 372**



Product Number	Description	Finish
		Polished Chrome
		002

6540.168	Widespread Lavatory with field-convertible rigid/swivel gooseneck spout with 8" reach. 1.5 gpm/5.7 L/min pressure compensating aerator. Vandal-resistant 6" wrist blade handles. Less drain and pop-up hole.
----------	--

MEETS THE AMERICANS WITH DISABILITIES ACT GUIDELINES AND ANSI A117.1 REQUIREMENTS FOR ACCESSIBLE AND USABLE BUILDING FACILITIES-CHECK LOCAL CODES

Other Aerators Available:

Part Suffix	Description
LV15	1.5 gpm (5.7 Lpm) Vandal-Resistant PCA Non-Aerated Laminar Flow Outlet
V15	1.5 gpm (5.7 Lpm) Vandal-Resistant PCA Aerator
LV10	1.0 gpm (3.8 Lpm) Vandal-Resistant PCA Non-Aerated Laminar Flow Outlet
V10	1.0 gpm (3.8 Lpm) Vandal-Resistant PCA Aerator
V035*	0.35 gpm (1.3 Lpm) Vandal-Resistant PCA Multi-Laminar Spray

PCA - Pressure Compensating
 *Meet CALGreen Code