

**Cadet Chair Height Elongated Pressure-Assisted Toilet**  
1.6 gpf/ 6.0 Lpf

- 2467.016**
  - Vitreous china
  - Low-consumption (1.6 gpf/6.0 Lpf)
  - EverClean® surface inhibits the growth of stain- and odor-causing bacteria, mold, and mildew on the surface
  - Bowl rim at 16-1/2" for accessible applications
  - Elongated bowl
  - Pressure-assisted siphon jet flush action
  - Fully-glazed 2-1/8" trapway
  - 10 x 12" water surface area
  - Close-coupled Flushometer tank\*
  - Metal chrome trip lever
  - Speed Connect® tank/bowl coupling system
  - Sanitary dam on bowl
  - Two bolt caps
  - 100% factory flush tested
  - 12" Rough-in



- 2467.164** Same as above except with slotted rim bowl for bed pan holding (white only)
- 3483.016** Bowl with two bolt caps
- 3483.001** Same as above, Universal Bowl
- 3484.001** Bowl with slotted rim for bed pan holding with two bolt caps (white only)
- 4142.016** Tank complete with coupling components

**Nominal Dimensions:**

768 x 521 x 781mm  
(30-1/4" x 20-1/2" x 30-3/4")

Fixture only, seat and supply by others

Recommended working pressure range  
25 psi - 80 psi

**Alternate Configurations Available:**

- 4142.600** Tank and tank cover only with tank cover locking device
- 4142.800** Tank and tank cover only with right hand trip lever
- 4142.900** Tank complete with right hand trip lever and tank cover locking device

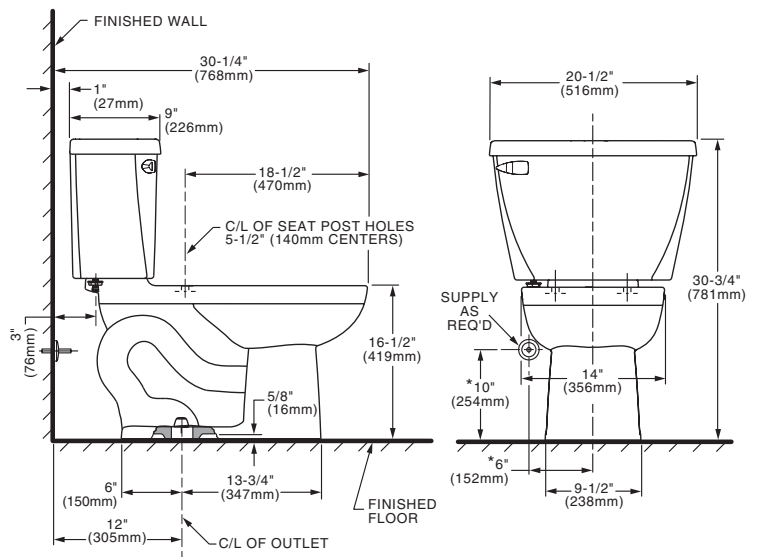
**Compliance Certifications -**

**Meets or Exceeds the Following Specifications:**

- ASME A112.19.2-2008 / CSA B45.1-08 for Vitreous China Fixtures

**To Be Specified:**

- Color:  White  Bone  Linen  Black
- Seat: American Standard #5257A.65D EverClean® "Easy Lift and Clean" solid plastic closed front seat with cover.
- American Standard #5257A.65C EverClean Slow Close "Easy Lift and Clean" solid plastic closed front seat with cover.
- Alternate Seat:



**NOTES:**

THIS TOILET IS DESIGNED TO ROUGH-IN AT A MINIMUM DIMENSION OF 305mm (12") FROM FINISHED WALL TO C/L OF OUTLET. SUPPLY NOT INCLUDED WITH FIXTURE AND MUST BE ORDERED SEPARATELY. \* DIMENSION SHOWN FOR LOCATION OF SUPPLY IS SUGGESTED.

**IMPORTANT:** Dimensions of fixtures are nominal and may vary within the range of tolerances established by ASME A112.19.2-2008 / CSH B45.1-08. These measurements are subject to change or cancellation. No responsibility is assumed for use of superseded or voided pages.

**MEETS THE AMERICANS WITH DISABILITIES ACT GUIDELINES AND ANSI A117.1 REQUIREMENTS FOR ACCESSIBLE AND USABLE BUILDING FACILITIES - CHECK LOCAL CODES.**