

**Pintbrook® 0.125 GPF
High Efficiency Urinal System**

- **6002.503** 0.125 gpf Exposed Top Spud Urinal and Manual Piston-Type Urinal Flush Valve

URINAL:

- Vitreous china
- High Efficiency operates in the range of 0.125 gpf to 0.50 gpf (0.47 Lpf/1.9 Lpf)
- Powerful washdown action
- Optimized chinaware contours provide superior splash protection
- 3/4" inlet top spud
- Outlet connection threaded 2" NPT
- Wall hangers included
- Made in Mexico (NAFTA compliant)
- Model 6002.001.020

MANUAL FLUSH VALVE:

- Self-cleaning brass piston
- Integral wiper spring cleans refill orifice with every flush, preventing clogging and run-on
- No routine maintenance required. No diaphragm to change; no filter screen to clean.
- Piston operation delivers superior flush accuracy and repeatability
- Valve remains closed and does not need to be reset after loss of water pressure
- Non-hold open handle provides automatic shut-off
- High back pressure vacuum breaker prevents leaking
- Chloramine-resistant EPDM seals
- Adjustable tailpiece for rough-in flexibility
- Can be installed left or right handed
- No external volume adjustment
- ADA complaint
- Model 6045.013.002

Includes:

- 2 Wall hangers
- 3/4" I.P.S. angle stop with back-flow protection and vandal-resistant cap
- Sweat solder kit including cover tube and wall flange
- High back pressure vacuum breaker with down tube
- Spud coupling and flange for 3/4" top spud



SEE REVERSE FOR ROUGHING-IN DIMENSIONS

High-Efficiency Urinal Systems:

- 87.5% water savings when compared to a 1.0 gpf urinal system

Operating Pressure:

20 psi (flowing)-80 psi (static)

Flow Requirement:

10 gpm (37.9 L/min.)

Nominal Fixture Dimensions:

366 x 364 x 575 mm

(14-7/16" x 14-5/16" x 22-5/8")



MEETS THE AMERICANS WITH DISABILITIES ACT GUIDELINES AND ANSI A117.1 ACCESSIBLE AND USEABLE BUILDINGS AND FACILITIES - CHECK LOCAL CODES.

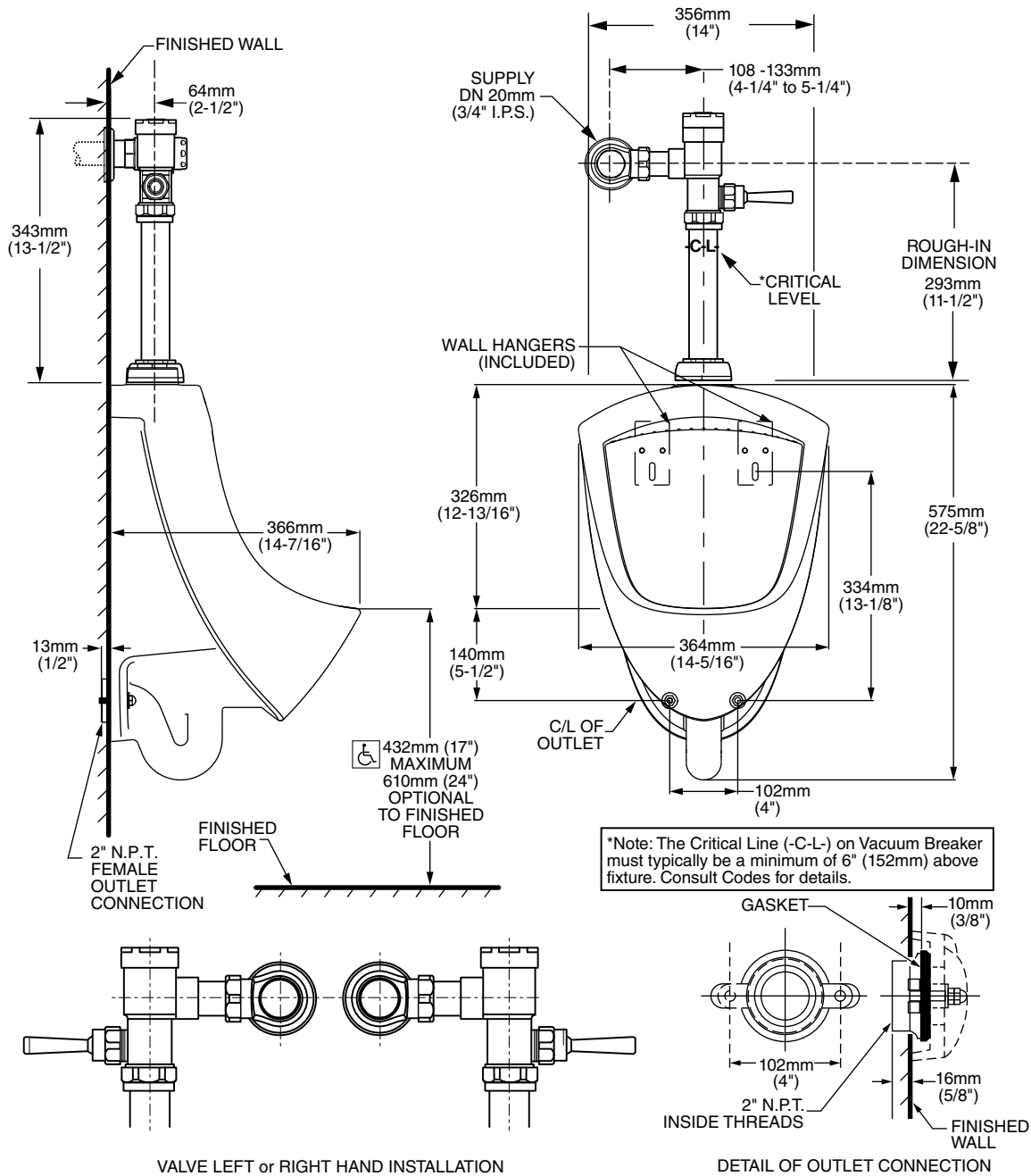
- When installed so top of rim is 432mm (17") from finished floor.



**5-YEAR LIMITED
WARRANTY on
FIXTURE and
FLUSH VALVE**



**EPA
WATERSENSE
CERTIFIED**



Fixture Compliance Certifications - Meets or Exceeds the Following Specifications:

- ASME A112.19.2-2008/CSA B45.1-08 for Vitreous China Fixtures

Valve Listings:

- ASSE 1037
- ANSI/ASME A112.19.2
- ADA Compliant

NOTES: PROVIDE SUITABLE REINFORCEMENT FOR ALL WALL SUPPORTS.

IMPORTANT: Dimensions of fixtures are nominal and may vary within the range of tolerances established by ANSI Standard A112.19.2. These measurements are subject to change or cancellation. No responsibility is assumed for use of superseded or voided pages.