



PRODUCT FEATURES:

- **Flexible Selectronic® Platform** with programmable, multi-function sensor.
- **Hygienic, touch-free operation**
- **Easy & Flexible Installation:** Single post mounting with optional 4" & 8" deck plate. Water resistant solenoid enclosure mounts to wall.
- **Durable Vandal-Resistant Brass Body:** Ideal for high-use commercial applications.
- **Self-Cleaning Solenoid Valve:** Wiper spring prevents clogging
- **Easy to Service Integrated Strainer:** Patented integrated strainer protects solenoid from debris. Strainer is enclosed in removable debris cup for easy service.
- **Optional Auto Purge Feature:** Faucet can be programmed to open at a pre-determined time after last use to purge the faucet and water lines.
- **Safety Timer:** Helps prevent vandalism by turning off the faucet if the sensor is covered for 55 seconds or more. Timing is adjustable with optional remote control.
- **Adjustable Range:** Detection zone can be adjusted manually or with optional remote control.
- **Fail-Safe:** Faucet automatically shuts off upon loss of power or dead battery. Prevents costly excess water usage and potential flooding.
- **Lead-Free:** Faucet contains ≤ 0.25% total lead content by weighted average.

GENERAL DESCRIPTION:

Electronic faucet with proximity operation. Vandal-resistant cast brass spout with single post mounting. Water pressure range from 20 to 125 psi. Single inlet. 18" flexible stainless steel inlet hose with 3/8" compression fitting for connection to control box.

MODEL NUMBER:

- **BASE UNIT (Does not include power supply)**
 - **250B.105** 0.5 GPM pressure compensating, vandal-resistant multi-laminar spray.
 - **205B.102** 1.5 GPM pressure compensating, vandal-resistant aerator.
- **POWER KITS (Must be purchased separately)**
 - **PK00.PAC** Includes universal Plug-In AC power supply.
 - **PK00.MAC** Includes Y-splitter and 10' extension cable.
 - **PK00.HAC** Includes universal Hard-Wired AC transformer and 10' extension cable.
- **OPTIONAL Battery Back-Up**
 - **PK00.BBU** Allows faucet to continuously operate during a power failure.
- **OPTIONAL 4" or 8" Deck plates**
 - **605P.400** 4" brass deck plate with 1/4" fixation studs and quick spin nuts. (6-1/8" x 2-1/8" x 1/2")
 - **605P.800** 8" brass deck plate with 1/4" fixation studs and quick spin nuts. (10-1/8" x 2-3/8" x 1/2")
- **OPTIONAL Thermostatic Mixing Valve**
 - **605XTMV1070** Thermostatic mixing valve. 20" flexible stainless steel inlet hoses with 3/8" compression fittings. ASSE 1070 certified down to 0.35 gpm.

POWER OPTIONS:

- **Universal Voltage:** 100 - 240 VAC, 50/60 Hz
- **Plug-In AC:** Includes Class 2 UL certified universal Plug-In AC power supply with 6' long power cord.
- **Hard-Wired AC:** Includes Class 2 UL certified universal Hard-Wired AC transformer (electrical box by others).
- **Multi-AC:** One AC transformer can power up to 15 faucets and/or flush valves in a daisy chain configuration. **POWER SUPPLY NOT INCLUDED.**

FINISHES:

Polished Chrome	.002
Brushed Nickel	.295

RECOMMENDED SPECIFICATION:

Electronic, sensor-operated lavatory faucet shall feature a programmable, multi-function sensor and an electronically operated self-cleaning solenoid valve. Shall also feature a vandal resistant solid brass construction with single inlet and in-line strainer. Shall meet ANSI A112.18.1 and ANSI 117.1 codes. Fitting shall be American Standard Model # 250B.1__.

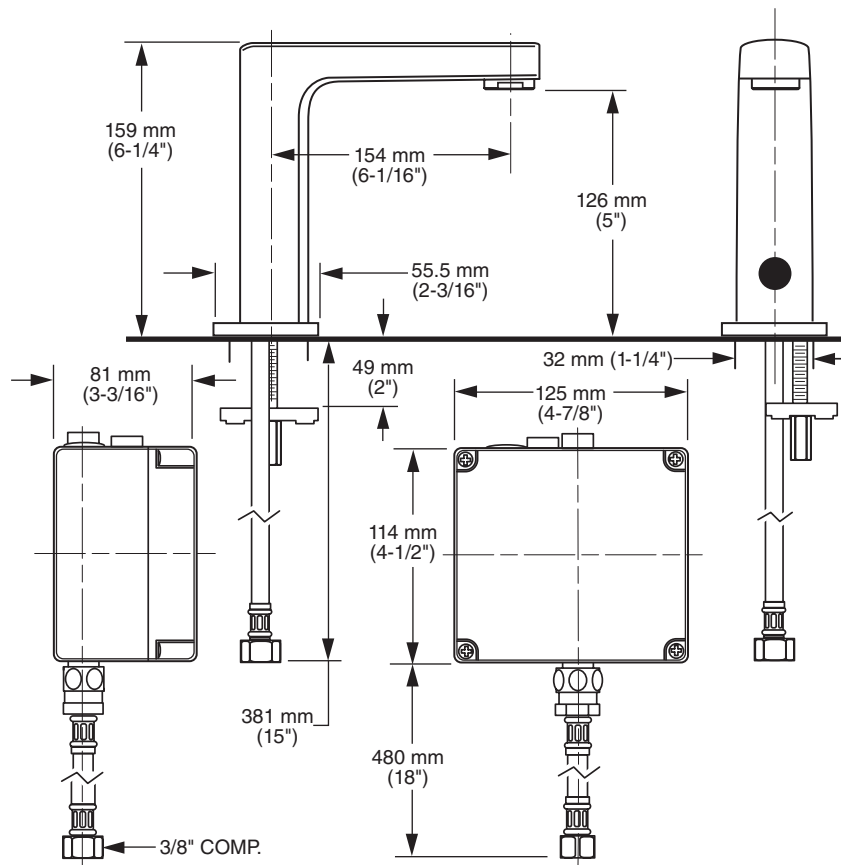
CODES AND STANDARDS

These products meet or exceed the following codes and standards:

- ANSI A117.1
- ASME A112.18.1
- CSA B 125
- NSF 372

Other Aerators Available:	
Part Suffix	Description
LV15	1.5 gpm (5.7 Lpm) PCA Vandal-Resistant Non-Aerated Laminar Flow Outlet
LV10	1.0 gpm (3.8 Lpm) PCA Vandal-Resistant Non-Aerated Laminar Flow Outlet
V10	1.0 gpm (3.8 Lpm) PCA Vandal-Resistant Aerator
V035*	0.35 gpm (1.3 Lpm) PCA Vandal-Resistant Non-Aerated Spray

PCA - Pressure Compensating
 * Meets Cal Green Code



ADA Meets the American Disabilities Act Guidelines and ANSI A117.1 Requirements for accessible and usable building facilities - check local codes

PART OF LIXIL