

T064.602 Shown with R116SS

MODEL NUMBER:

TRIM KITS:

- T064.602 Bath/Shower Trim Kit with Built-In Diverter**
 - Brass wall escutcheon with built-in diverter
 - Adjustable “3 function” Showerhead
 - Brass tub spout
 - LESS Valve

ROUGH VALVES:

- R116SS Pressure Balance Rough Valve Body with Built-in Diverter & Screw Driver Stops. LESS Trim.**

GENERAL DESCRIPTION:

TRIM KIT

3-Function modern showerhead at 2.5gpm/9.5L/min. max. flow rate. Brass spout. Brass wall escutcheon. Available with metal lever handle.

ROUGH VALVE BODY

Cast brass body, washerless ceramic disc valve cartridge with back-to-back capability, integrated check valves and hot limit safety stop. Cycles from “off” to “cold” to “hot.” Pressure balancing cartridge maintains constant output temperature in response to changes in relative hot and cold supply pressure. Integral diverter. 1/2" threaded inlets and outlets. Available with screwdriver stops. Rough-in plaster guard designed for use as thin-wall mounting adaptor.

PRODUCT FEATURES:

3-Function Showerhead: Offers user ability to personalize their shower experience.

Solid Brass Construction: Durable, ideal material for prolonged contact with water.

Ceramic Disc Valve Cartridge: Assures a lifetime of drip-free performance.

Pressure Balancing Valve: Maintains constant output temperature in response to changes in relative hot and cold supply pressure. Diaphragm system with integrated check valves engineered to eliminate cross flow. Avoids failure due to mineral deposits - ideal for use in hard water.

Back-to-Back Capability: Hot and cold can be reversed quickly and easily.

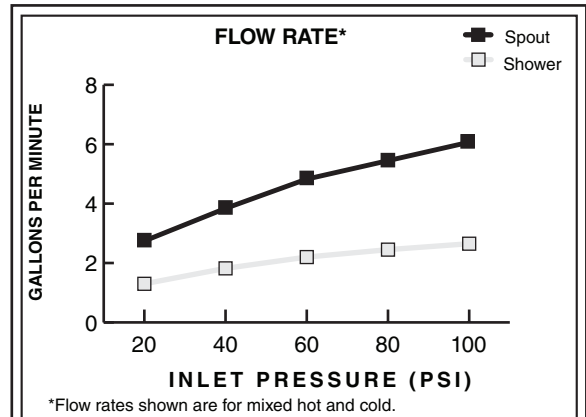
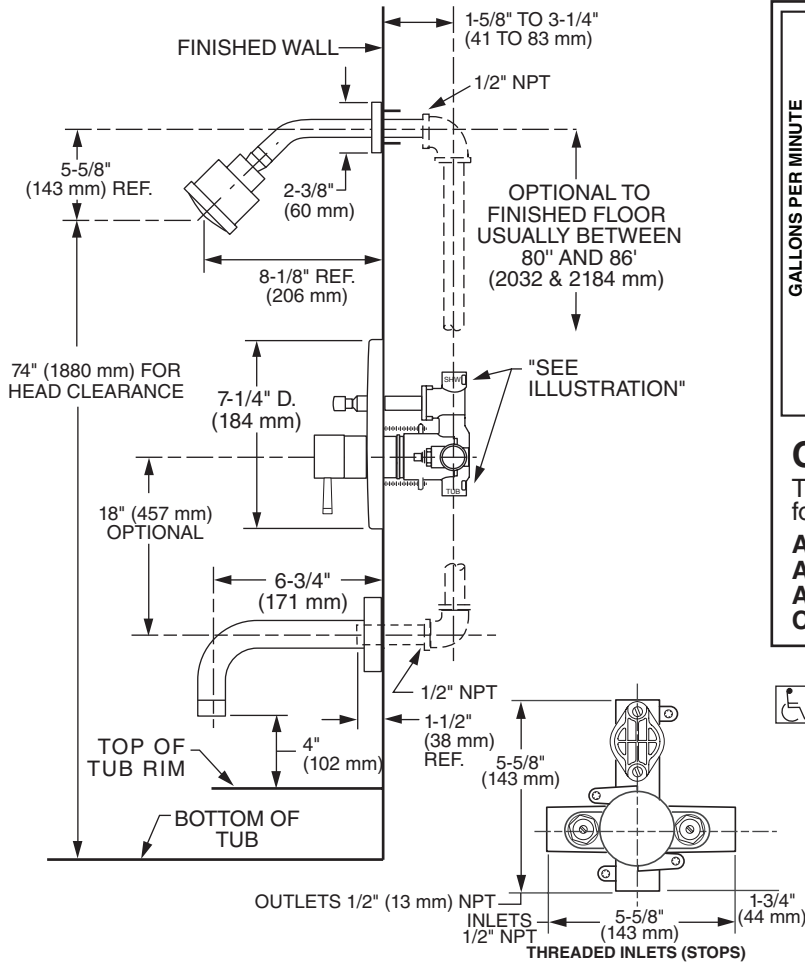
Built-In Diverter: Easy to use, integrated in valve body and includes positive shut-off. Allows spout and showerhead in any desired installation location.

Adjustable Hot Limit Safety Stop: Limits the amount of hot water allowed to mix with cold. Reduces the risk of accidental scalding.

Integral Plaster Guard and Mounting Plate: Plaster guard is designed to protect valve during installation and serve as a mounting plate for thin-wall installations.

SUGGESTED SPECIFICATION:

Bath/shower fitting shall be a cast brass construction with all brass spout. Shall also feature washerless ceramic disc valve cartridge. Fitting shall be equipped with pressure balancing mechanism and hot limit safety stop. Fitting shall be American Standard Model # R116SS with T064 _____. _____ trim kit.



CODES AND STANDARDS

These products meet or exceed the following codes and standards:

- ANSI A 117.1**
- ASSE 1016**
- ASME A112.18.1**
- CSA B 125**



Meets the American Disabilities Act Guidelines and **ANSI A117.1** Requirements for the physically challenged.

TRIM KITS *	Product Number	Description	Finish Options	
T064.602	Bath/Shower Trim Kit. LESS Valve.		Polished Chrome	002
ROUGH VALVE BODIES	Product Number	Description		
R116SS	Pressure Balance Rough Valve Body w/Built-in Diverter & Screw Driver Stops. LESS Trim.			

* TRIM & ROUGH MUST BE ORDERED SEPARATELY.