

3275.502 Shown

MODEL NUMBER:

- 3275.502 Bath/Shower Fitting**
Slip-on diverter tub spout. Easy Clean showerhead. Lever handles.
- 3275.501 Shower Only Fitting**
Easy Clean showerhead. Lever handles.
- 3275.505 Wall-Mounted Tub Filler**
Slip-on tub spout. Lever handles.



GENERAL DESCRIPTION:

Cast brass valve body on 8 inch centers. 1/4 turn washerless ceramic disc valve cartridges - reversible for use with either lever or knob handles. 1/2" N.P.T. male threaded / 1/2" sweat inlets and 1/2" N.P.T. outlets. Easy clean showerhead with 2.5 gpm/9.5L/min. flow restrictor.

PRODUCT FEATURES:

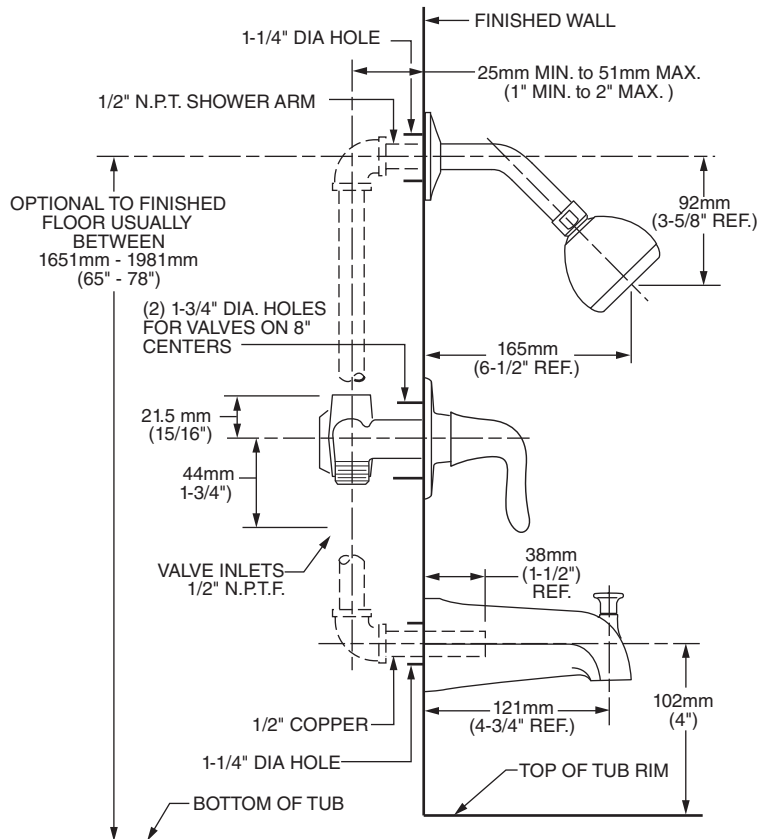
Brass Construction: Durable - Ideal for prolonged contact with water. Provides the finest surface for application of all finishes.

Ceramic Disc Valve Cartridges: Assures a lifetime of smooth handle operation and drip-free performance.

Exclusive Handle Alignment System: Allows fine tuning of handle position.

Choice of Finishes: Available in Polished Chrome or Polished Brass PVD.

Exclusive Plaster Guard: Plaster guard can be used to test for leaks prior to handle installation.



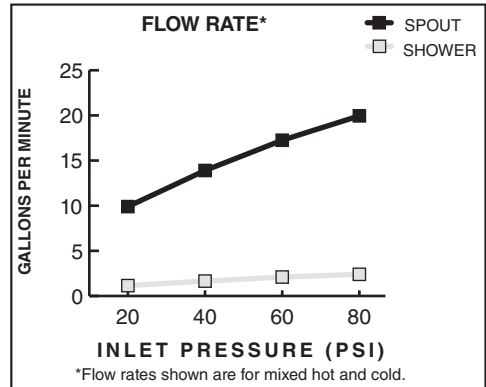
SUGGESTED SPECIFICATION:


Two handle bath/shower fitting shall feature cast brass construction. Shall also feature 1/4 turn washerless ceramic disc valve cartridges that are reversible for use with lever or knob handles. Fitting shall be American Standard Mode # 3275.____.


CODES AND STANDARDS

These products meet or exceed the following codes and standards:

**ASME A112.18.1
CSA B 125**



	Product Number	Description	Finish
			Polished Chrome 002
	3275.502	Two handle Bath/Shower. I.P.S. diverter tub spout. Easy Clean Showerhead. Lever handles.	
	3275.501	Two handle Shower Only. Easy Clean Showerhead. Lever handles.	
	3275.505	Wall Mounted Tub Filler. I.P.S. tub spout. Lever handles.	

 Meets the American Disabilities Act Guidelines and **ANSI A117.1** Requirements for the physically challenged.