



YORKVILLE™ ELONGATED PRESSURE-ASSISTED TOILET 1.6 gpf / 6.0 Lpf VITREOUS CHINA

YORKVILLE™ ELONGATED PRESSURE-ASSISTED TOILET 1.6 gpf / 6.0 Lpf

- 2876.016**
 - Vitreous china
 - **Floor-mounted, back-outlet toilet**
 - Low-consumption (1.6 gpf/6.0 Lpf)
 - EverClean® surface inhibits the growth of stain- and odor-causing bacteria, mold, and mildew on the surface
 - Elongated bowl
 - Pressure-assisted siphon jet flush action
 - Fully-glazed 2-1/8" trapway
 - 10 x 12" water surface area
 - Close-coupled Flushometer tank*
 - Metal chrome trip lever
 - Speed Connect® tank/bowl coupling system
 - Sanitary dam on bowl
 - 4 bolt caps
 - 100% factory flush tested
- 3701.016** Elongated bowl with 4 bolt caps
- 3701.001** Same as above, Universal Bowl
- 4142.016** Flushometer tank complete with coupling components



Nominal Dimensions:
752 x 516 x 742mm
(29-3/4" x 20-1/2" x 29-1/4")

Fixture only, seat and supply by others

Recommended working pressure range
25 psi - 80 psi

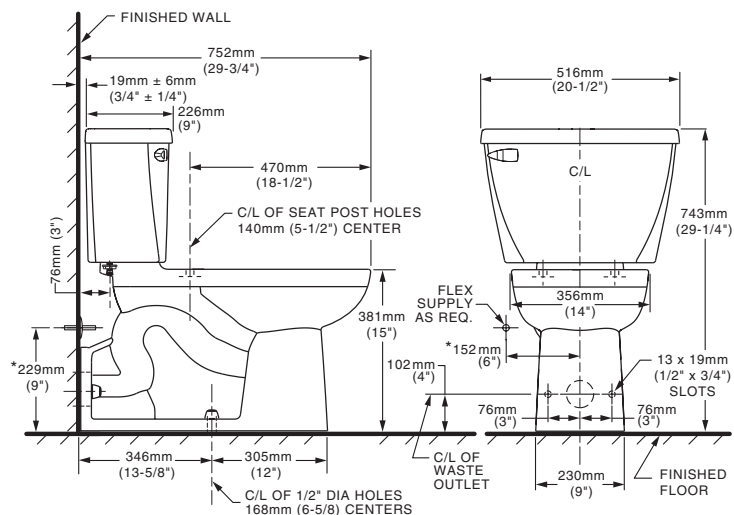
Alternate Configurations Available:

- 4142.600** Tank and tank cover only with tank cover locking device
- 4142.800** Tank and tank cover only with right hand trip lever
- 4142.900** Tank complete with right hand trip lever and tank cover locking device

Compliance Certifications -

Meets or Exceeds the Following Specifications:

- ASME A112.19.2-2008 / CSA B45.1-08 for Vitreous China Fixtures



NOTES:

WASTE OUTLET SEAL RING MUST BE NEOPRENE OR GRAPHITE-FELT (WAX RING NOT RECOMMENDED).

SUPPLY NOT INCLUDED WITH FIXTURE AND MUST BE ORDERED SEPARATELY.

DISTANCE FROM FLOOR TO CLOSET FLANGE CENTERLINE (ROUGH-IN) MUST BE 4" (102 MM) WITH FLANGE SURFACE FLUSH TO 1/16" (1.5MM) MAX. BEYOND FINISHED WALL.

* DIMENSION SHOWN FOR LOCATION OF SUPPLY IS SUGGESTED. FOR ADDITIONAL INFORMATION REFER TO INSTALLATION INSTRUCTIONS SUPPLIED.

IMPORTANT: Dimensions of fixtures are nominal and may vary within the range of tolerances established by ASME A112.19.2-2008 / CSH B45.1-08. These measurements are subject to change or cancellation. No responsibility is assumed for use of superseded or voided pages.

To Be Specified:

- Color: White Bone Linen
- Seat: American Standard #5901.100.020
- Supply with Stop: