

**COMRADE™ WALL-HUNG LAVATORY**

- Wall-hung sink
- Vitreous china
- Rear overflow
- Soap depression
- Faucet ledge (faucet not included)

**0124.024** With wall hanger (Illustrated)  
Faucet holes on 102mm (4") centers

**0124.131** For concealed arms support  
Faucet holes on 102mm (4") centers

**Nominal Dimensions:**

508 x 464mm  
(20" x 18-1/4")

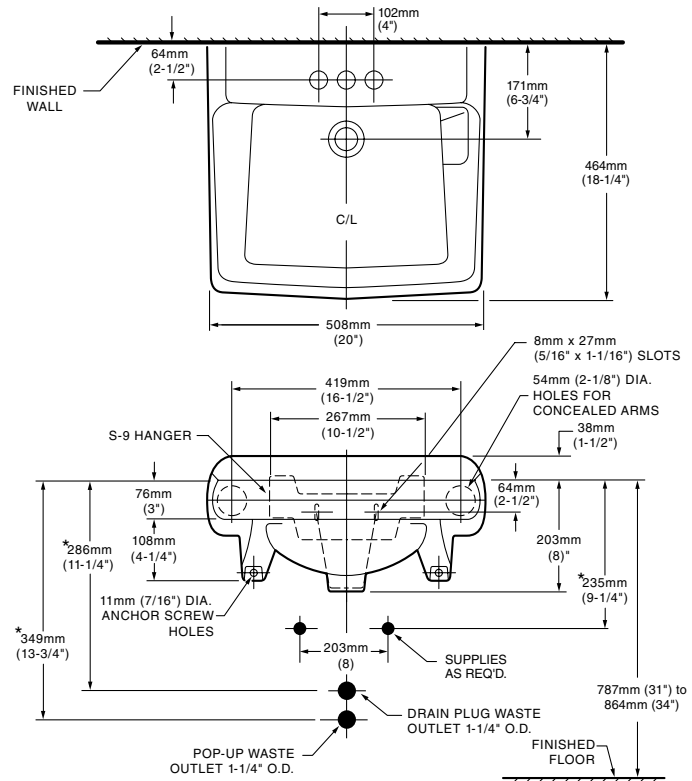
**Bowl sizes:**

381mm (15") wide  
276mm (10-7/8") front to back  
159mm (6-1/4") deep

**Compliance Certifications -**

**Meets or Exceeds the Following Specifications:**

- ASME A112.19.2 for Vitreous China Fixtures



**To Be Specified:**

- Color:  White
- Faucet\*:
- Faucet Finish:
- Supplies:
- 1-1/4" Trap:
- Nipple:
- Concealed Arms Support (by others):

\* See faucet section for additional models available

**NOTES:**

\* DIMENSIONS SHOWN FOR LOCATION OF SUPPLIES AND "P" TRAP ARE SUGGESTED. PROVIDE SUITABLE REINFORCEMENT FOR ALL WALL SUPPORTS. FITTINGS NOT INCLUDED AND MUST BE ORDERED SEPARATELY.

**IMPORTANT:** Dimensions of fixtures are nominal and may vary within the range of tolerances established by ANSI Standard A112.19.2. These measurements are subject to change or cancellation. No responsibility is assumed for use of superseded or voided pages.