

NEW Afwall® Millennium™ FloWise® Wall-Hung Toilet

DESIGNED TO OUTPERFORM.

Introducing the new Afwall Millennium FloWise wall-hung toilet line from American Standard. Our reliable and dependable wall-hung toilet is now even better and more powerful with a premier flushing performance at lower flush volume, increased static weight load capacity, and streamlined design.

3351.101.020
Afwall Millennium
FloWise Elongated
Top Spud with EverClean
(Shown with American
Standard Selectronic® Flush
Valve sold separately)



Improved performance,
durability and design



*American
Standard*

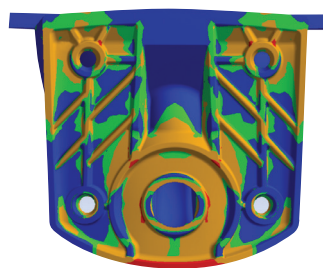
The New and Improved Afwall® Millennium™

FEATURES:

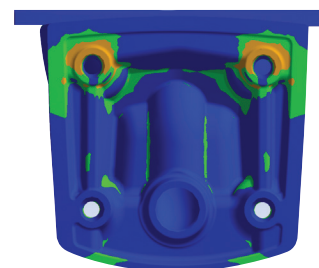
- Durable vitreous china construction
- Available with EverClean® surface—a permanent antimicrobial surface that inhibits the growth of stain and odor-causing bacteria, mold and mildew
- Universal consumption and High Efficiency, operates in the range of 1.1 gpf to 1.6 gpf (4.2 Lpf to 6.0 Lpf)
- Built-in condensation channel re-directs moisture from flush valve back into the bowl
- Powerful performance—Maximum Performance (MaP) score of 1,000 grams at 1.1 gpf-1.6 gpf when used with American Standard flush valves
- Concealed trapway design improves the aesthetic of the product, great for high-end establishments
- Improved durability with static weight load of 1,000 lbs (not recommended for bariatric use)
- Available with bedpan holding for healthcare facilities
- Available standard top spud model for NAFTA compliant projects
- Meets the Americans with Disabilities Act (ADA) Guidelines



Typical Wall-Hung Toilet in the Market



New Afwall Millennium



MAXIMUM STRESS  MINIMUM STRESS

On a typical wall-hung toilet, most of the stress caused by the load on the toilet is **concentrated on the back plate of the bowl.**

The new Afwall Millennium patent pending design distributes the stress throughout the bowl so that the stress on the back plate is greatly reduced. This allows the bowl to achieve a much higher weight load rating than a typical wall-hung toilet.

AVAILABLE MODELS:

EverClean Models

- 3351.101.020 Afwall Millennium FloWise® Elongated with EverClean, Top Spud
- 3352.101.020 Afwall Millennium FloWise Elongated with EverClean, Top Spud with Bed Pan Lugs
- 3353.101.020 Afwall Millennium FloWise Elongated with EverClean, Back Spud
- 3354.101.020 Afwall Millennium FloWise Elongated with EverClean, Back Spud with Bed Pan Lugs

Standard Models

- 2257.101.020 Afwall Millennium FloWise Elongated less EverClean, Top Spud
- 2257.101NAF.020* Afwall Millennium FloWise Elongated less EverClean, Top Spud, NAFTA Compliant
- 2633.101.020 Afwall Millennium FloWise Elongated less EverClean, Top Spud with Bed Pan Lugs
- 2634.101.020 Afwall Millennium FloWise Elongated less EverClean, Back Spud



For more information on the New Afwall Millennium, please visit our website at www.americanstandard-us.com/bathroom-products/afwall-millennium/, scan the QR code, or call 1-800-442-1902.

*NAFTA compliant model will be made-to-order with leadtime and price premium compared to the standard model

©2014 AS America, Inc. SALI3E192