

AQUALYN® DROP IN SINK

- Made from vitreous china
- Self-rimming with cutout template supplied
- Front overflow
- Faucet ledge

- 0475.020** Faucet holes on 8" (203mm) centers (illustrated)
- 0475.920** Same as 0475.020 less overflow
- 0476.028** Faucet holes on 4" (102mm) centers
- 0476.928** Same as 0476.028 less overflow
- 0476.037** Same as 0476.028 with extra right-hand hole for soap dispenser
- 0475.035** Same as 0476.028 with extra left-hand hole for soap dispenser
- 0475.047** Center hole only



SEE FOLLOWING PAGES FOR ROUGHING-IN DIMENSIONS

Nominal Dimensions:

20-3/8" x 17-3/8"
 (518 x 441mm)

Bowl sizes:

16" (406mm) wide
 10" (254mm) front to back
 5-5/8" (143mm) deep

Compliance Certifications - Meets or Exceeds the Following Specifications:

- ASME A112.19.2M for Vitreous China Fixtures

To Be Specified:

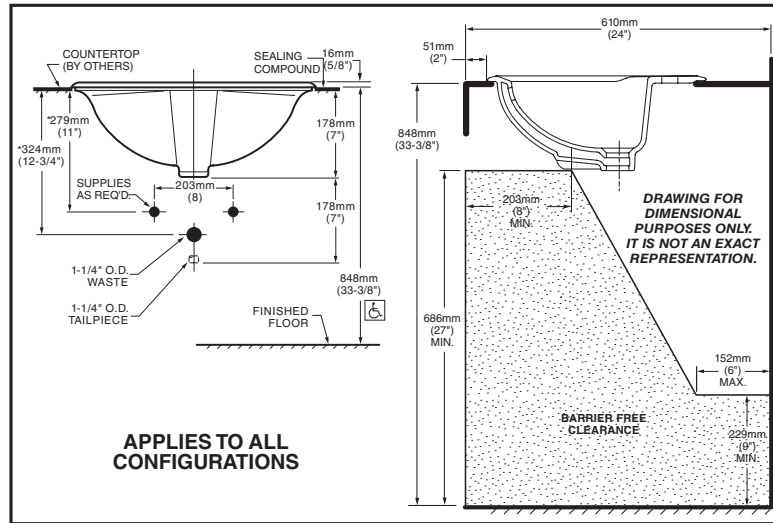
- Color: White Bone Linen
- Faucet*:
- Faucet Finish:
- Supplies:
- 1-1/4" Trap:

* See faucet section for additional models available

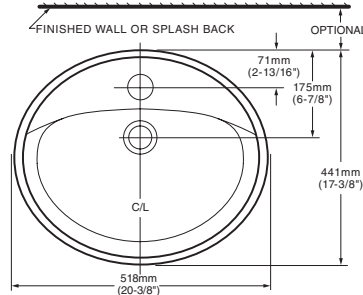


MEETS THE AMERICANS WITH DISABILITIES ACT GUIDELINES AND ANSI A117.1 ACCESSIBLE AND USABLE BUILDINGS AND FACILITIES - CHECK LOCAL CODES.

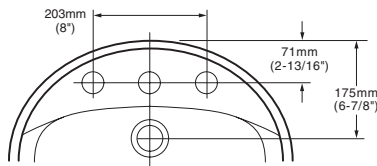
Install lavatory 864mm (34") from finished floor.
 Lavatory installed 51mm (2") minimum from front edge of countertop provides 686mm (27") knee clearance area.



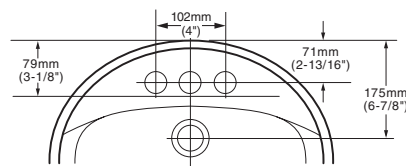
0475.047



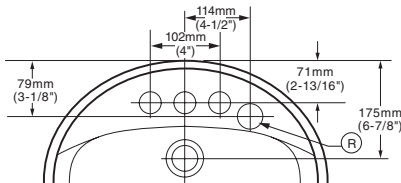
0475.020 / 0475.920



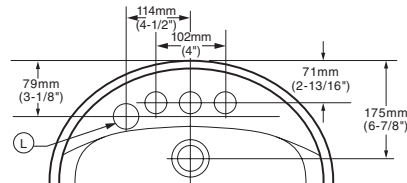
0476.028 / 0476.928



0476.037



0475.035



	0475.020 0475.920	0476.028 0476.928	0475.047	0476.037 0475.035
HOLES				
SPOUT	1-3/8" (35mm) DIA.	1-1/4" (32mm) DIA.	1-3/8" (35mm) DIA.	1-1/4" (32mm) DIA.
FAUCET	1-3/8" (35mm) DIA.	1-1/4" (32mm) DIA.		1-1/4" (32mm) DIA.
SOAP DISPENSER				1-3/8" (35mm) DIA.

NOTES:

* DIMENSIONS SHOWN FOR LOCATION OF SUPPLIES AND "P" TRAP ARE SUGGESTED. FOR COUNTERTOP CUTOUT AND INSTALLATION INSTRUCTIONS USE TEMPLATE SUPPLIED WITH SINK. FITTINGS NOT INCLUDED WITH FIXTURE AND MUST BE ORDERED SEPARATELY. SEALING COMPOUND SUPPLIED BY OTHERS.

IMPORTANT: Dimensions of fixtures are nominal and may vary within the range of tolerances established by ANSI Standard A112.19.2. These measurements are subject to change or cancellation. No responsibility is assumed for use of superseded or voided pages.