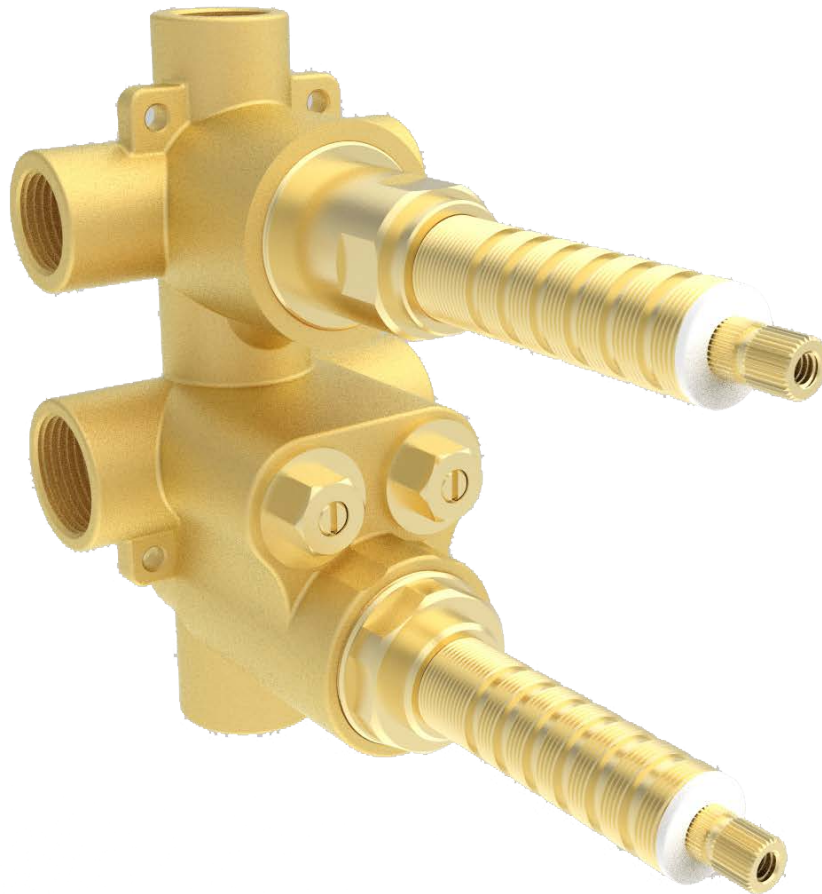


# artos<sup>®</sup>

## F973V0

## INSTALLATION GUIDE

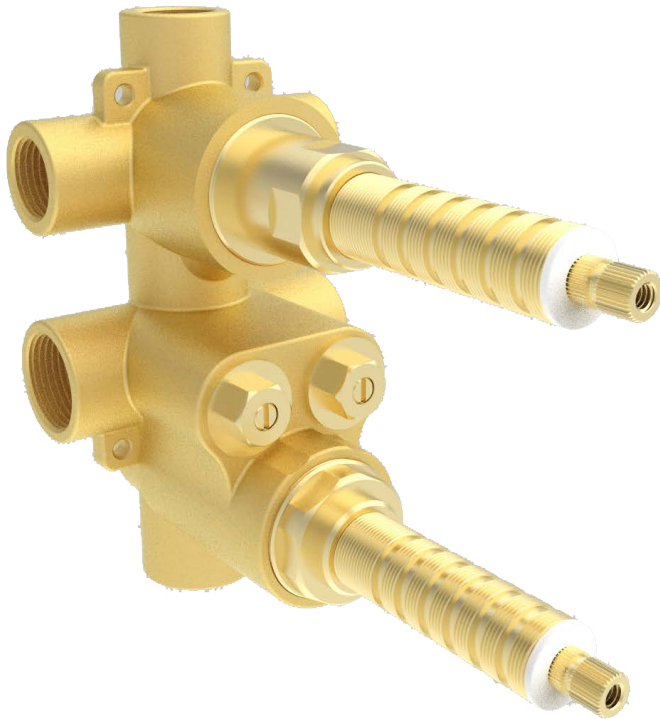
thermostatic valve with 3-way  
shared diverter



# artos<sup>®</sup>

## F973V0

thermostatic valve with 3-way  
shared diverter



## OPERATING SPECIFICATIONS

### MIXED WATER TEMPERATURE

Maximum: 120°F

### HOT WATER SUPPLY TEMPERATURE

Maximum: 180°F

Minimum: 50°F

Advisable: 150°F- 160°F

Minimum difference between hot mixed temperature 50°F

### OPERATING PRESSURE

Maximum: 125psi

Minimum: 20psi

Recommended: 30psi- 95psi

Operating pressures (on hot and cold lines) should be kept as balanced as possible, in order to assure the maximum efficiency.

### STANDARDS

ASSE 1016.ASME A112.18.1/CSA B123.1

### APPROVALS

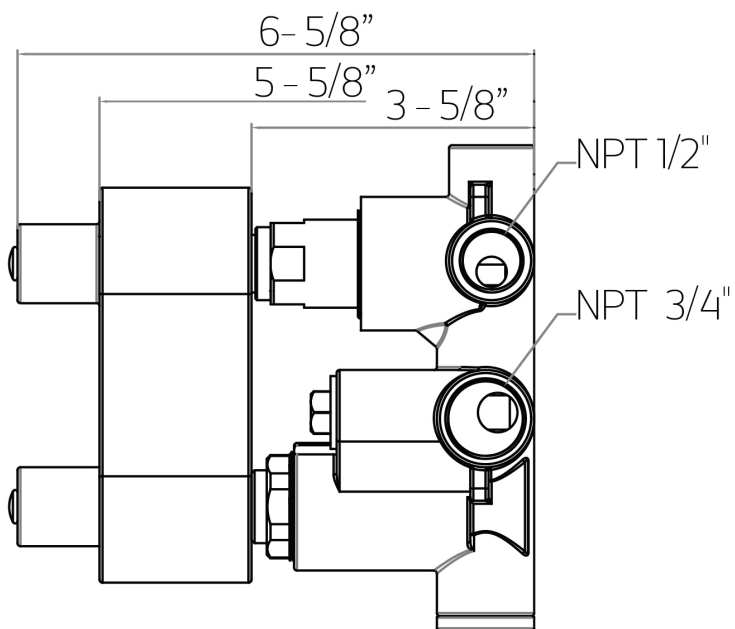
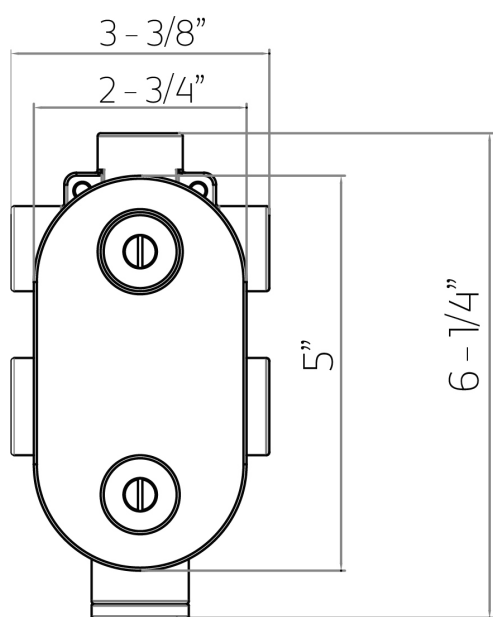


# artos<sup>®</sup>

## F973V0

### TECHNICAL SPECIFICATIONS

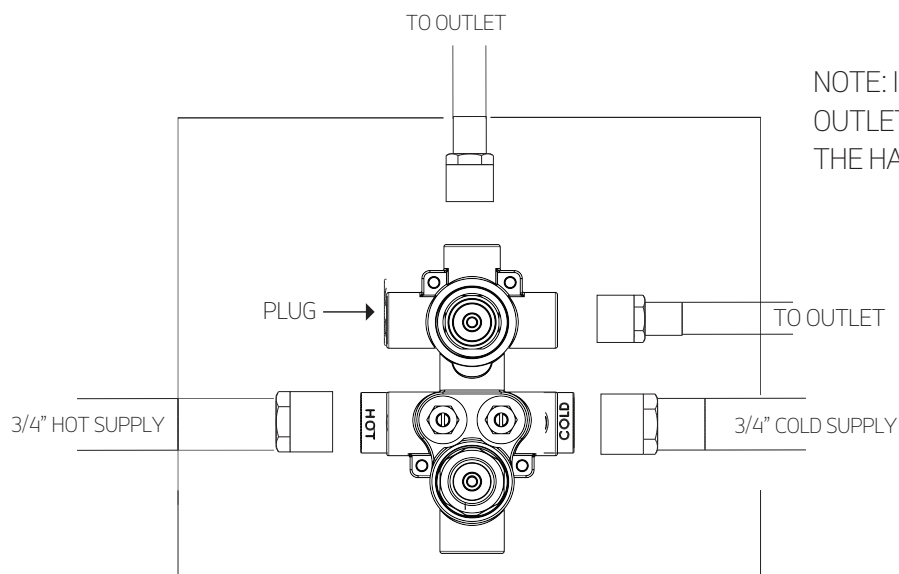
thermostatic valve with 3-way  
shared diverter



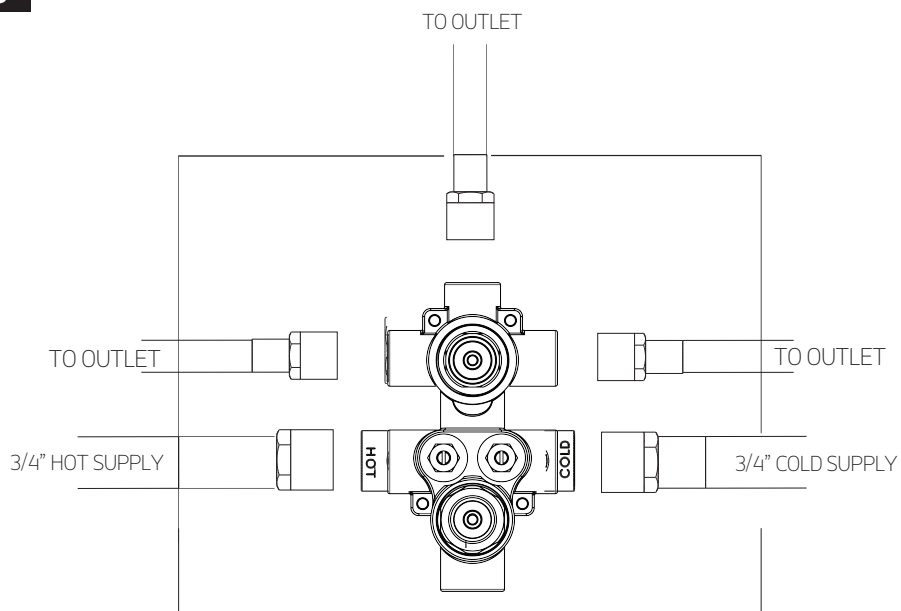
#### STEP 1

**IMPORTANT: IF USING HEAT NEAR THE VALVE BODY PLEASE REMOVE CARTRIDGES.**

#### TWO OUTLETS



#### THREE OUTLETS



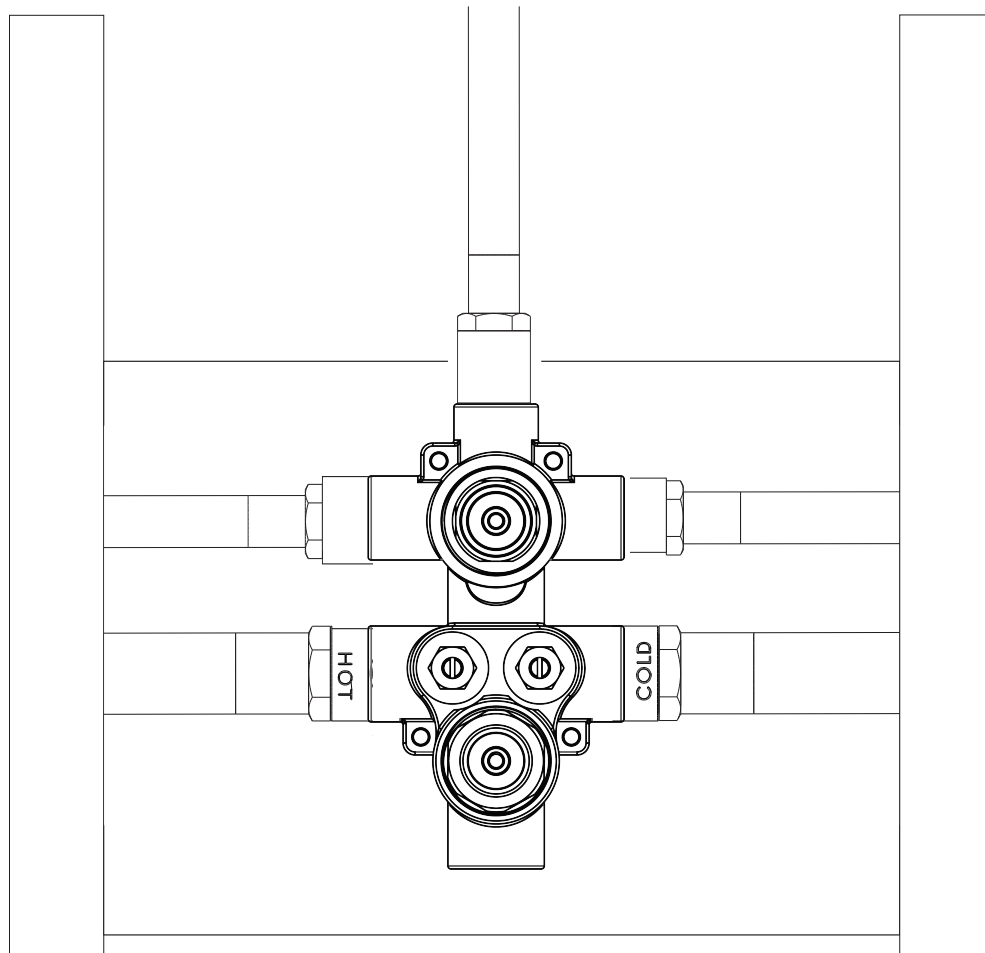
# artos<sup>®</sup>

## F973V0

### INSTALLATION STEPS

thermostatic valve with 3-way  
shared diverter

#### STEP 2



#### 2"X 4" WALLS

USE 3/4" PLYWOOD BACKER

#### 2"X 6" WALLS

USE 2"X 6" BACKER

#### WALL WITH 2X4" STUDS

BACK OF SPACE

3/4"

PLASTER GUARD

FRONT OF PLASTER GUARD  
TO FINISH WALL SURFACE

**MAX= 3"**  
**MIN= 1"**

#### WALL WITH 2X6" STUDS

BACK OF SPACE

2X6" BACKER

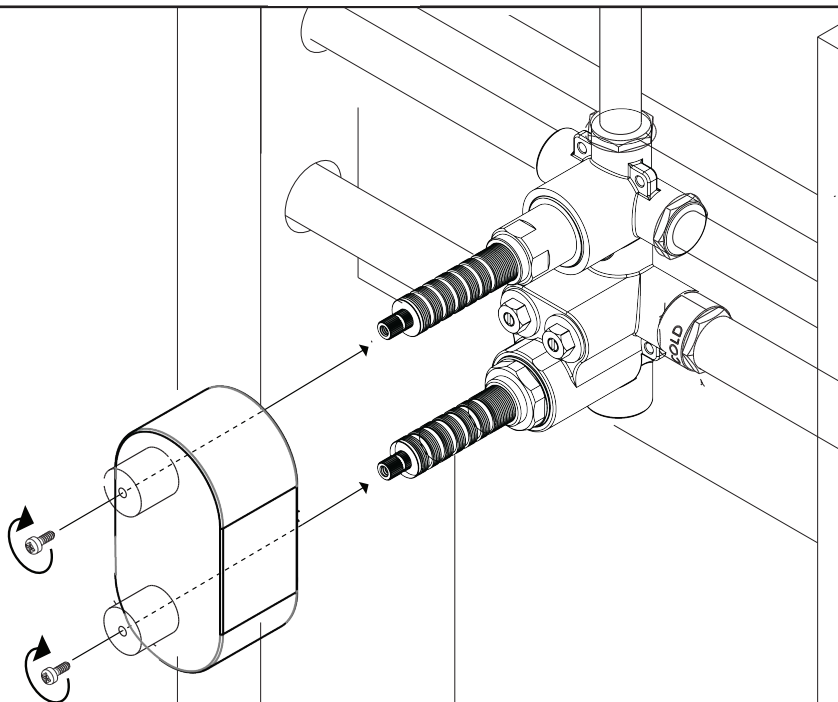
PLASTER GUARD

FRONT OF PLASTER GUARD  
TO FINISH WALL SURFACE

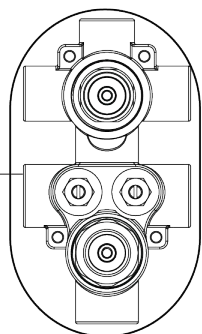
**MAX= 3"**  
**MIN= 1"**

thermostatic valve with 3-way  
shared diverter

### STEP 3



### STEP 4



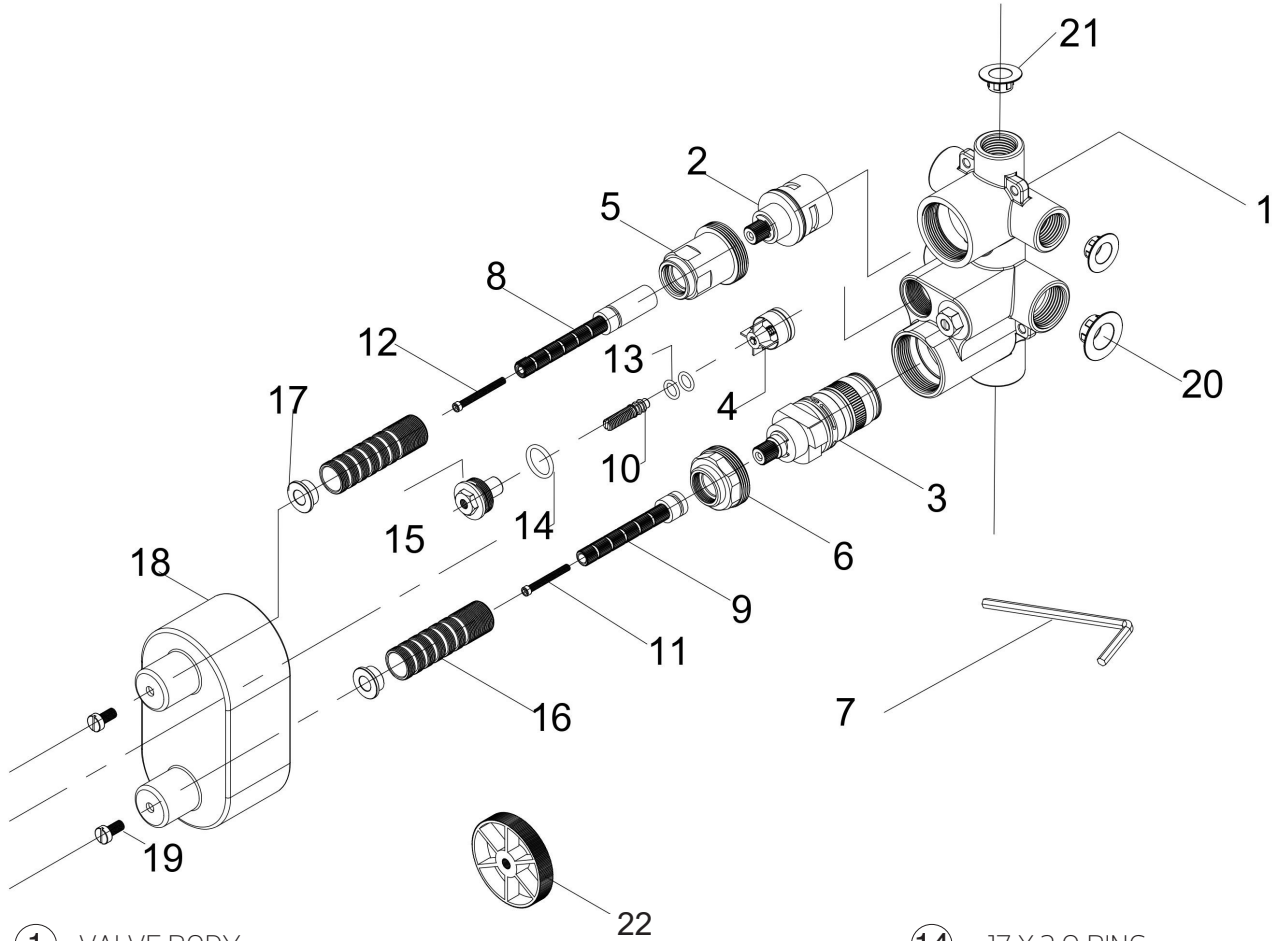
CUT HOLE THROUGH  
WALL TO FIT AS  
CLOSE AS POSSIBLE  
TO PLASTER GUARD

artos®

F973V0

thermostatic valve with 3-way  
shared diverter

## PARTS BREAKDOWN



- 22

1	VALVE BODY	14	17 X 2 O RING
2	SHARED DIVERter CARTRIDGE	15	NRV NUT X2
3	VERNET THERMOSTATIC CARTRIDGE	16	OUTER SPINDLE X2
4	NEOPERL CHECK VALVES X2	17	SLEEVE BUSH X2
5	DIVERter CARTRIDGE NUT	18	PLASTER GUARD
6	THERMOSTATIC CARTRIDGE NUT	19	1/4" X 1/2" BOLT X2
7	ALLEN KEY 3MM	20	3/4" DUST CAP X2
8	DIVERter INNER SPINDLE	21	1/2" DUST CAP X3
9	THERMOSTAT INNER SPINDLE	22	TEMPORARY HANDLE
10	NRV SPINDLE X2		
11	M4X20 ALLEN BOLT		
12	M4X40 ALLEN BOLT		
13	4 X 1.8 O RING X2		