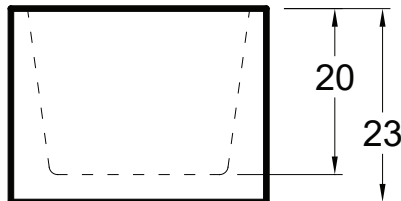
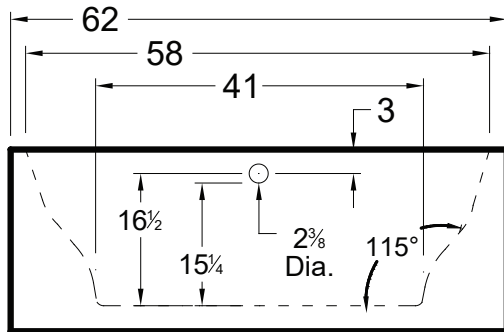
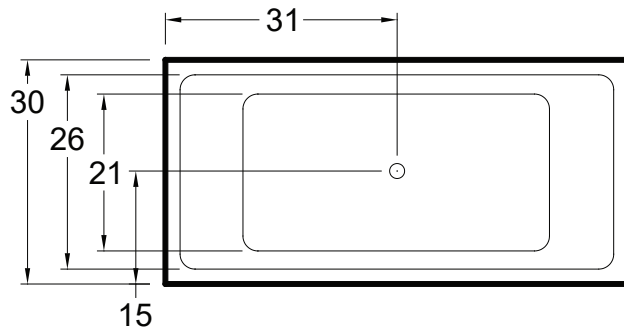


# AMERICH®

## LEX® 6230



### DIMENSIONS

62" x 30" x 23" (1575 x 762 x 584 mm)  
Gallon to Overflow = 75 (Liters = 284)

### MATERIAL

Polymer Composite

### TUB FLOOR

Non - Textured

### UNDERMOUNT:

This tub is not designed for undermount installation.

### APPROVALS & COMPLIANCE



Americh products meet or exceed the following standards:

- Underwriters Laboratories (UL)
- Underwriters Laboratories - Canada (cUL)
- ANSI Z124.1 • ANSI A112-19.7
- ANSI A112.19.8

Contact Americh for additional approvals.

### STANDARD EQUIPMENT

- Integral Waste & Overflow

### OPTIONAL ACCESSORIES

- Linear Waste & Overflow upgrade

### INSTALLATION TIPS

1. Install according to Owner's Manual and local codes.
2. Always consult your local plumber for recommendations as installations will vary.
3. The bath must be secured to the floor by applying a bead of silicone around the base (which can be cut in future should there be a need to access to the plumbing).
4. Installation must be carried out according to the manufacturer instructions.
5. Hot water supply should be 65-75% of tub capacity or greater.

★ Made in the USA

All bathtub dimensions are ± 1/2"

Last Update 1/20/21

Always check our website for the most updated specifications: [Americh.com](http://Americh.com)