

# DARSEY 10242STNSW – DARSEY BATH & SHOWER SUITES

102 x 43 ¼ x 78 ¾ inches

SOAKER MODEL #10242STNSW

WHIRLPOOL MODEL #10242STNSWWP



## FEATURES

- 2-piece tub & shower suite
- 42" x 42" shower with integral toiletry shelf
- 60" x 43 ¼" bathtub, 2-sided wainscot and 18" integral skirt
- Subway tile
- Molded toiletry shelves
- 7 ½" wainscot
- Right or left hand tub location
- Ergonomic backrest
- Slip-resistant textured bottom
- AcrylX™ applied acrylic surface
- Available in the West Zone only
- Lifetime limited warranty

### Whirlpool Features:

- 6 directional hydrotherapy jets
- Available in White and Biscuit/Linen only
- Color matched trim
- Pneumatic on/off control
- Advanced safety suction system

## AQUATIC ADVANTAGE

- National distribution
- 7 manufacturing facilities
- Private fleet
- Centralized customer service
- Field support

## COLOR OPTIONS

Stock	Upgraded	Premium
White	Almond Biscuit/Linen Bone	Black Mexican Sand Sand Bar Sterling Silver

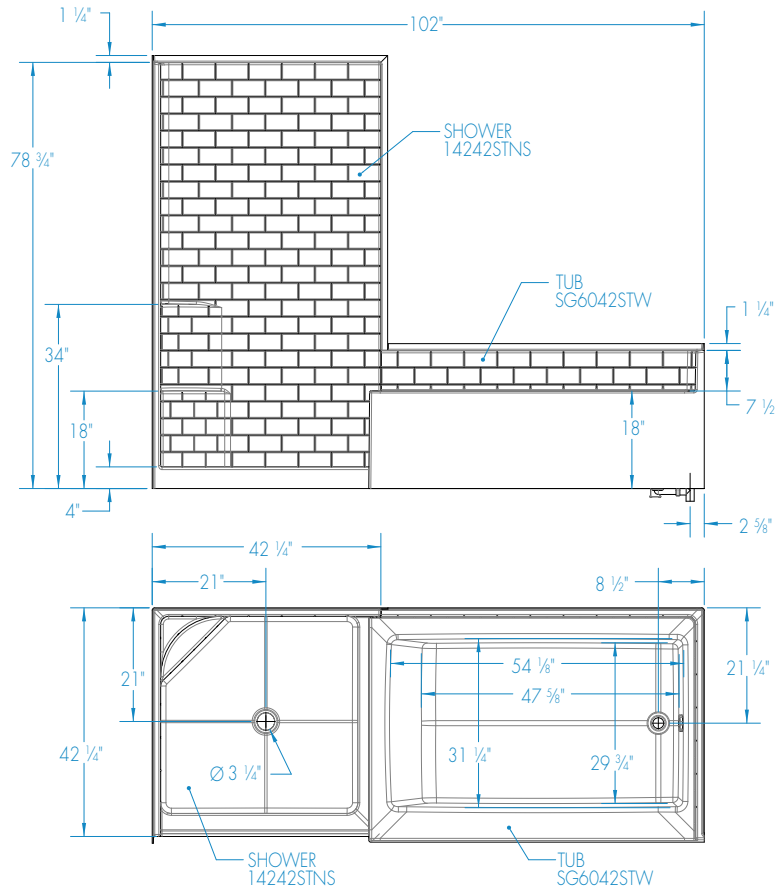
## OPTIONS

- Removable access panel (whirlpool models)
- Designer drain, waste & overflow



# DARSEY 10242STNSW

102 x 43 1/4 x 78 3/4  
inches



## FEATURES

Dimensional Tolerance  $\pm 3/8$ ". Dimensions needed for site preparation should be measured from the unit. Aquatic assumes no responsibility for preparatory work.

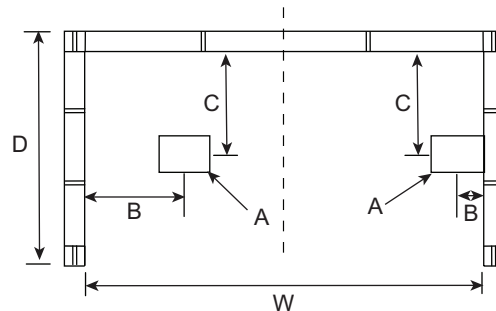
Model #	Material	Wall Finish	Jets	Motor	Controls	Drain	Net Wt. lbs.	Pkg. Wt. lbs.
Soaker #10242STNSW	AcrylX™	Subway Tile	0	-	-	LH or RH	240	250
Whirlpool #10242STNSWWP	AcrylX™	Subway Tile	6	63 GPM	Pneumatic	LH or RH	290	300

## DIMENSIONS

Specifications	inches
Width: Overall / Net	102
Depth: Overall / Net	43 1/4 / 43 1/4
Height: Overall / Net	80 / 78 3/4
Enclosure Opening	-
Skirt Height	18
Drain Rough-In (from Back Wall)	21 1/4 tub / 21 shower
Drain Rough-In (from Side Wall)	2 5/8 tub / 21 shower
Drain: Diameter / Clearance	2 / 3/4 tub 3 1/4 / 3/4 shower

## FRAMING DIMENSIONS inches

Type	D Depth	W Width	H Height	A	B Tub/Shower	C Tub/Shower
Alcove	43 1/4	102	80	Box Out	2 5/8 / 21	21 1/4 / 21



## SUMP DATA

Top of Drain to Bottom of Overflow	Capacity to Overflow gal	Min. Operating Capacity gal	WIDTH @ centerline		DEPTH @ centerline	
			Top	Bottom	Top	Bottom
12 1/8	76.5	50	54 1/8	47 5/8	31 1/4	29 3/4