

# 260330SM – EVERYDAY TUB/SHOWERS

60 x 30 x 75 inches



## FEATURES

- Tub-shower
- Smooth wall finish
- Three integral toiletry shelves
- Slip resistant, textured bottom
- Above-floor rough
- Left or right drain location
- AcrylX™ applied acrylic surface
- Lifetime limited warranty

## OPTIONS

- \*Grab bar reinforcement (side walls only)
- Factory installed assisted care grab bars
- Designer drain, waste & overflow
- Shower Door Series L0516

## AQUATIC ADVANTAGE

- National distribution
- 6 manufacturing facilities
- Private fleet
- Centralized customer service
- Field support

## COLOR OPTIONS

Stock	Upgraded	Premium
White	Almond Linen/Biscuit Bone	Black Mexican Sand Sand Bar Sterling Silver

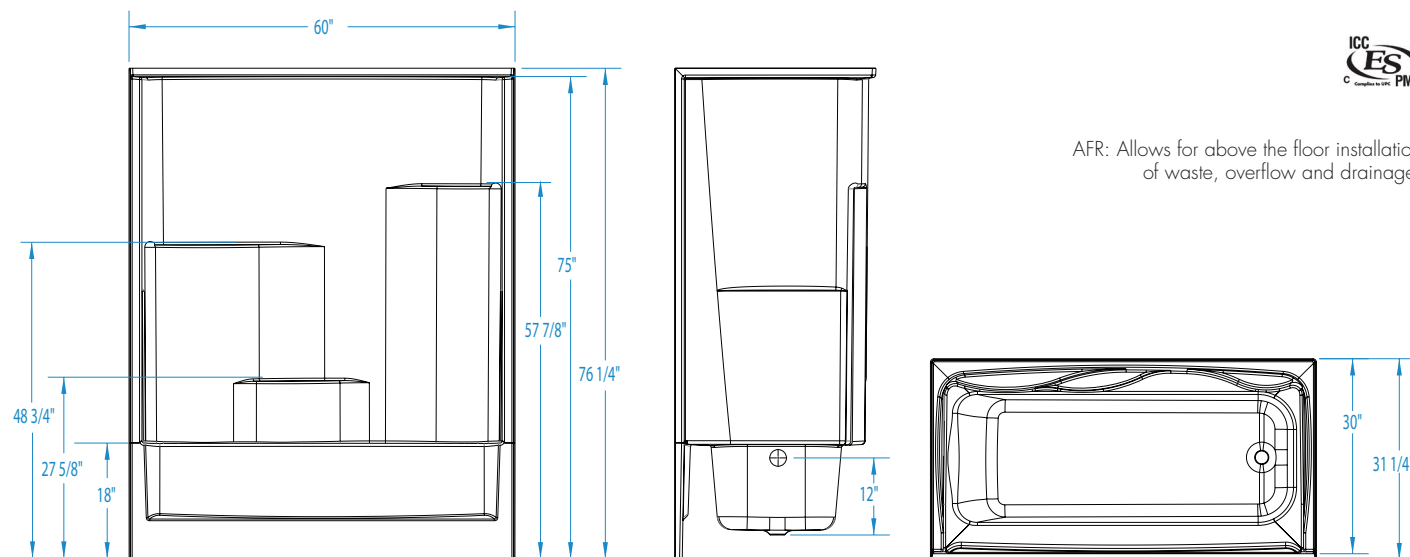


# 260330SM

60 x 30 x 75  
inches



AFR: Allows for above the floor installation of waste, overflow and drainage.



**FEATURES** lbs      Dimensional Tolerance  $\pm 3/8"$ . Dimensions needed for site preparation should be measured from the unit. Aquatic assumes no responsibility for preparatory work.

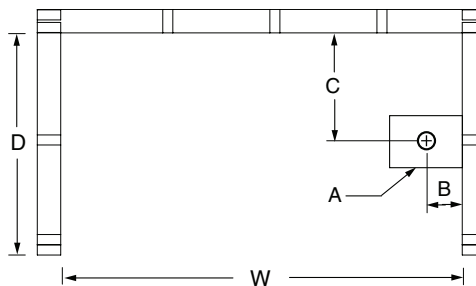
Model #	Material	Wall Finish	Jets	Motor	Controls	Drain	Net Wt.	Pkg. Wt.
AFR Tub-Shower #260330SM	AcrylX™	Smooth	-	-	-	LH or RH	121	126

## DIMENSIONS

Specifications	inches
Width: Overall / Net	60
Depth: Overall / Net	31 1/4 / 30
Height: Overall / Net	76 1/4 / 75
Enclosure Opening	56
Skirt Height	18
Drain Rough-In (from Back Wall)	15 3/8
Drain Rough-In (from Side Wall)	2
Drain: Diameter / Clearance	2 / 3 3/4

## FRAMING DIMENSIONS inches

Type	D Depth	W Width	H Height	A	B	C
Alcove	60 1/8	31 1/4	-	Box Out	2	15 3/8



## SUMP DATA

Top of Drain to Bottom of Overflow	Capacity to Overflow gal	Min. Operating Capacity gal	WIDTH @ centerline		DEPTH @ centerline	
			Top	Bottom	Top	Bottom
9 3/8	34	-	52 1/4	46 3/4	19 7/8	18 1/4