

70LF-400 Series

Single Union End, Solder Bronze Ball Valve

LEAD FREE



Job Name:	
Job Location:	
Engineer:	
Contractor:	
Tag:	
PO#:	
Rep:	
Wholesale Dist.:	

DESCRIPTION

The Apollo® 70LF-400 Series is a standard port ball valve that is designed to be soft soldered in to lines without disassembly. Manufactured with proven ASTM Materials.

FEATURES

- ASTM B584 Lead Free Bronze
- Blowout-Proof Stem Design
- Adjustable Packing Gland
- 600 psig CWP, Non-Shock
- NPT and Solder Union Connection
- Vacuum Service to 29 in. Hg
- EZ-Solder™ Lead Free Bronze

PERFORMANCE RATING

- Maximum Pressure:
600 psi CWP | 150 psi SWP
- Maximum Temperature: 350°F
- Vacuum Service to 29 in. Hg

APPROVALS

- MSS SP-110 Ball Valves
- NSF/ANSI 61 Water Quality
- NSF/ANSI 372 Lead Free
- IAPMO IGC-157 Ball Valves
- Directive 2011/65/CE (RoHS)

MODELS

- 70LF-400 Series - Standard
- 70LF-440 Series - 316 SS Ball & Stem

OPTIONS

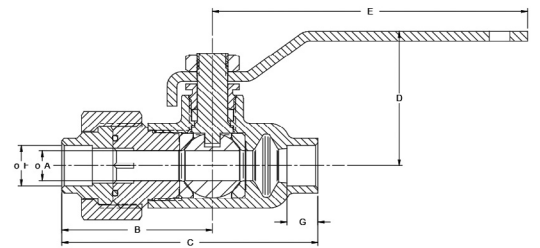
- (-04) 2-1/4" CS Stem Extension 3/4" - 2"
- (-10) SS Lever & Nut 3/4" - 2"
- (-27) SS Latch-Lock Lever & Nut 3/4" - 2"
- (-63) NPT x Solder/Socket Weld 3/4" - 2"

STANDARD MATERIALS LIST

LEVER AND GRIP	Steel, Zinc Plated w/ Vinyl
STEM PACKING / BEARING	RPTFE
BALL	C27451 Lead Free Brass
SEAT (2)	RPTFE
RETAINER	C27451 Lead Free Brass (3/4" to 1-1/2"), B584-C89836 Lead Free Bronze (2")
GLAND NUT & STEM	B16 Brass
LEVER NUT	Steel, Zinc Plated
BODY SEAL (1-1/4" TO 2")	PTFE
BODY	B584 C89836 Lead Free Bronze
TAILPIECE & NUT	C27451 or B584-C80836
UNION SEAL	Fluorocarbon
STEM	C27451 Lead Free Brass

DIMENSIONS

MODEL NUMBER	SIZE (IN.)	DIMENSIONS (IN.)						
		A	B	C	D	E	F	G
70LF-404-01	3/4	0.68	2.62	4.56	2.06	4.78		
70LF-405-01A	1	0.87	2.87	5.66	2.25	4.78		
70LF-406-01	1-1/4	1.00	2.87	5.18	2.62	5.50		
70LF-407-01	1-1/2	1.25	2.92	5.53	3.10	8.00		
70LF-408-01	2	1.50	3.50	6.75	3.24	8.00		



*LEAD FREE: The wetted surfaces of this product shall contain no more than 0.25% lead by weighted average. Complies with Federal Public Law 111-380. ANSI 3rd party approved and listed.