

PROLINE® ULTRA-LOW NO_x DIRECT VENT COMMERCIAL-GRADE RESIDENTIAL

FLAMMABLE VAPOR RESISTANT/ DIRECT VENT SEALED COMBUSTION SYSTEM

- Thru-the-wall/thru-the-roof venting of combustion products.
- Air for combustion is drawn from outside the building.

DURABLE, ULTRA-LOW NO_x BURNER CONSTRUCTION

NON-CFC FOAM INSULATION

- The tank is surrounded by a thick coat of non-CFC polyurethane foam to trap heat inside the tank, saving energy.

¾" TOP WATER CONNECTIONS AND SIDE SPACE HEATING CONNECTIONS

½" GAS CONNECTION

COMBINATION THERMOSTAT/ECO

- Factory-preset pressure regulator and built-in millivolt-powered energy cut-off for overheat protection

COREGARD™ ANODE ROD

- Our anode rods have a stainless steel core that extends the life of the anode rod allowing superior tank protection far longer than standard anode rods.

BLUE DIAMOND® GLASS COATING

- Provides superior corrosion resistance compared to industry-standard glass lining.

ENHANCED-FLOW BRASS DRAIN VALVE

- All residential water heaters have a solid brass, tamper resistant, enhanced-flow, ball type, drain valve.
- Uses a standard female hose fitting that allows for fast and easy draining during maintenance.

- Designed for easy operation, this valve includes an integral screwdriver slot that features a ¼ turn (open/close) radius, which not only permits full straight-through water flow but also a quick and positive shut off.

GREEN CHOICE® GAS BURNER

- Complies with SCAQMD Rule 1121 and other air quality management districts with similar requirements for NO_x emissions of less than 10 ng/J.

CODE COMPLIANCE

- Meets UBC, CEC and HUD National Codes.
- Meets the thermal efficiency and standby loss requirements of the U.S. Department of Energy and current edition of ASHRAE/IES 90.1.
- Complies with the Federal Energy Conservation Standards effective April 16, 2015, in accordance with the Energy Policy and Conservation Act (EPCA), as amended.

CSA CERTIFIED AND ASME RATED T&P RELIEF VALVE

DESIGNED-LISTED BY CSA INTERNATIONAL

- Certified at 300 psi test pressure and 150 psi working pressure.
- Listed according to ANSI Z21.10-1- CSA 4.1 standards governing storage tank-type gas water heaters.

6-YEAR LIMITED TANK AND PARTS WARRANTY

- For complete information, consult written warranty or go to hotwater.com.



Model Number	Nominal Capacity	Rated Storage Volume	First Hour Rating (Gallons)	UEF	Recovery 90°F Rise Gallon Per Hour	BTU Input Per Hour	Dimensions in Inches									Approx. Shipping Weight (lbs)
							Concentric Vent Connection	A	B	C	D	E	F	G	H	
GDNL-40L	40	39	64	0.59	39	36,000	3 and 5	65-1/4	50-1/2	22	13-1/2	30	43-7/8	15	45	179
GDNT-50L	50	48	76	0.65	41	38,000	3 and 5	73-1/2	58-1/2	22	13-1/2	30	52-1/4	15	53	193

No option available for top T&P valve.

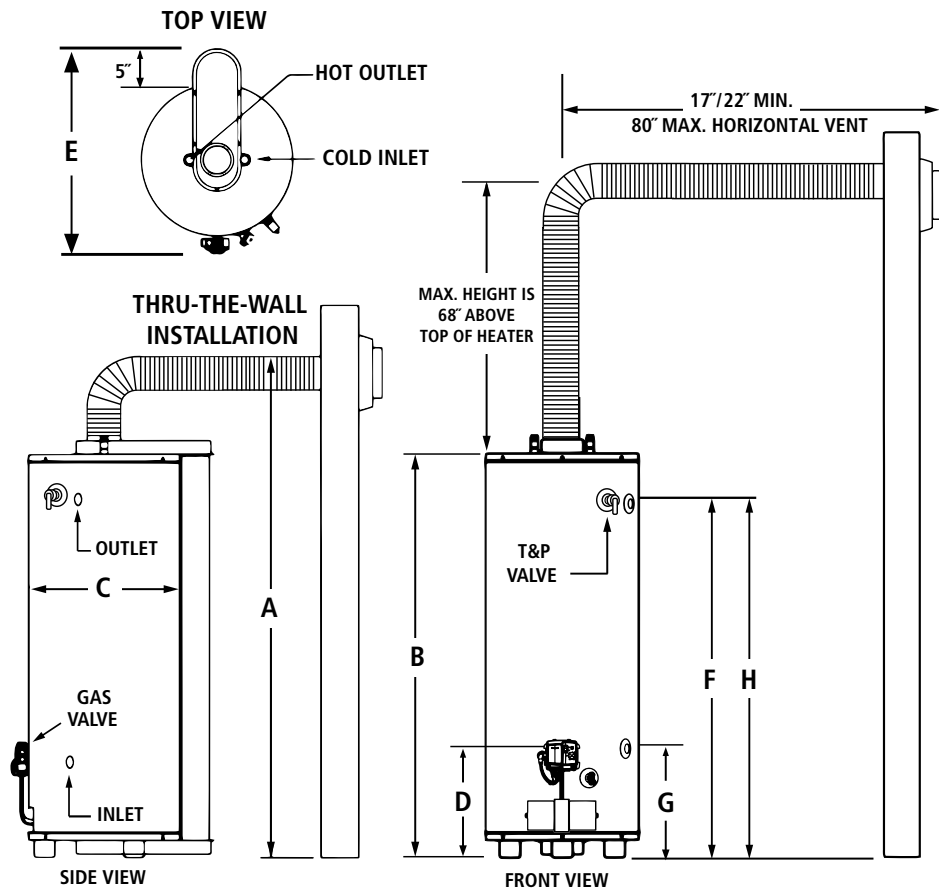
All models have 3/4" side and top water connections and 1/2" gas connections.

All models certified from sea level to 7,700 ft. elevation.

Dimensions and specifications are subject to change without notice in accordance with our policy of continuous product improvement.

IMPORTANT! VENT INSTALLATION AND TERMINATION REQUIREMENTS

- Maximum horizontal vent distance is 80" to the outside of exterior wall.
- Maximum vertical vent distance is 68" above heater before 90 degree turn through exterior wall.
- Minimum horizontal vent distance is 17" to outside of exterior wall if vent height is less than 48" above heater.
- Minimum horizontal vent distance increases to 22" if vent height is between 48" and 68" above top of heater.
- Vent pipes may be trimmed (cut) for short vent installations.
- The recommended installation height for the vent termination is dimension "A" in the above table. The minimum allowable height (center line of termination opening) is 60 3/4" for the 40-gallon model, 69 1/2" for the 50-gallon,
- Vent termination clearance hole through the exterior wall should be approximately 6" diameter.
- Snow accumulation and drifting should be considered when locating the termination.
- An optional wire grill vent cap protector is available through the parts department (part number 100111343).
- See the installation manual for complete installation and venting requirements.



For technical information call 800-527-1953. A. O. Smith Corporation reserves the right to make product changes or improvements without prior notice.