

GLASSLINED HEAVY DUTY TANK FEATURES

"Glasslining," a porcelain protective coating to a steel tank interior, is the plumbing industry's most time-tested system for protection of tanks. A. O. Smith Glasslined Pump Tanks feature rolled-steel construction, and every A. O. Smith Tank is made in the U.S.A.

Other A. O. Smith features include a 1-1/4" NPT spud on top for motor mount or retention tank connections, a 1/4" switch or gauge tapping on the air side of the tank, and full-size 1-1/4" connections at all needed locations.

ROLLED STEEL CONSTRUCTION

- Provides added structural strength and more capacity within the same diameters.

FUSED GLASSLINING

MAXIMUM WORKING PRESSURE 125 PSIG

5-YEAR LIMITED WARRANTY

ANODIC PROTECTION

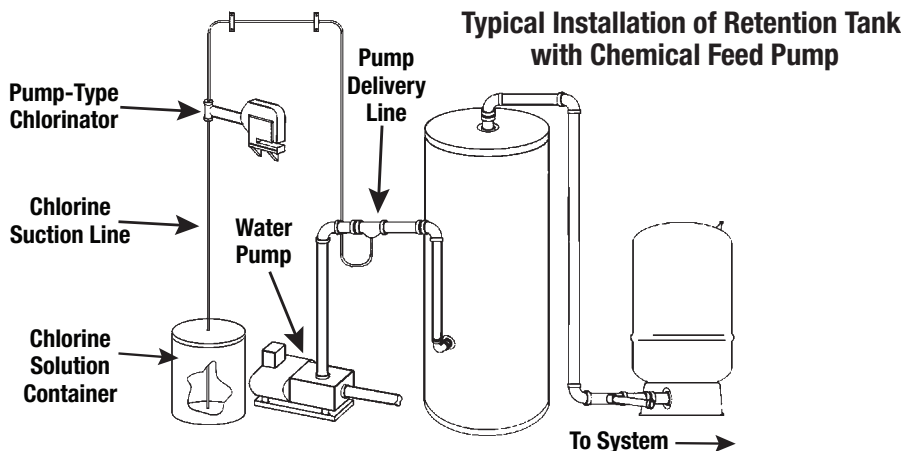
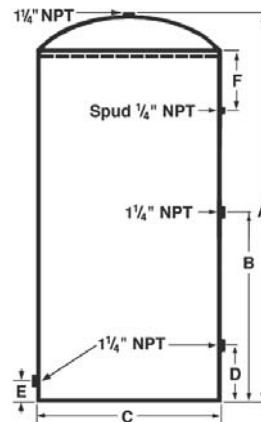
EXTERIOR POWDER COAT

- Excellent resistance to UV rays



G Series Glasslined Pump Tanks

Model Number	Volume (Gal)	Dimensions in Inches						Weight (Lbs)
		A	B	C	D	E	F	
SGT-42	42	49	26-3/8	16-1/2	12-3/8	3-1/8	6	69
SGS-42	42	35-7/8	17-3/8	20	8-3/8	3-1/8	6	79
SG-82	82	62-1/4	33-3/8	20	12-3/8	3-1/8	6	154
SG-120	120	63	33-3/8	24	12-3/8	3-1/8	6	205





Pump Tanks

GALVANIZED TANK FEATURES

VERTICAL OPTIONS

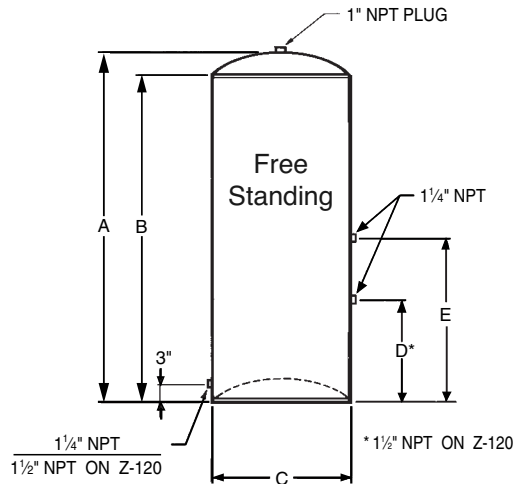
MAXIMUM WORKING PRESSURE 75 PSIG

NSF CERTIFIED

1-YEAR LIMITED WARRANTY

Sizes: 12 to 120 Gallons–Galvanized
Free Standing

Model Number	Vol. (gal)	Dimensions in Inches					Weight (Lbs.)
		A	B	C	D	E	
Z-12	12	26-1/2	24	12	5	13	27
Z-21	21	26-7/8	24	16	5	13	45
Z-32	32	38-3/4	36	16	8	17	52
ZT-42	42	51	48	16	12	26	71
ZS-42	42	33-5/8	30	20	8	17	71
Z-82	82	63	60	20	12	33	114
Z-120	120	64-1/2	60	24	12	33	154



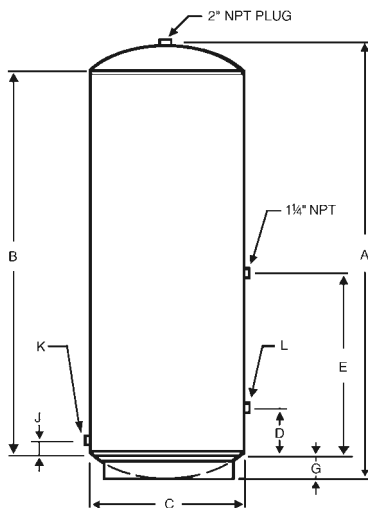
Sizes: 220 to 900 Gallons–Galvanized

Model Number	Vol. (gal)	Dimensions in Inches								Weight (Lbs.)	
		A	B	C	D	E	G	J	K		L
Z-220	220	78	66	30	6	32	6	2-1/2	2	2	303
Z-315	315	79-1/2	66	36	6	32	7	2-1/2	2	2	416
Z-480	480	87	72	42	6	32	7-1/2	2-1/2	2	3	640

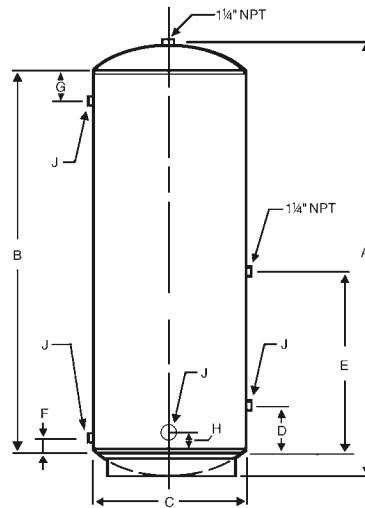
Model Number	Vol. (gal)	DIMENSIONS IN INCHES								Weight (Lbs.)	
		A	B	C	D	E	F	G	H		J
ZU-525	525	131	114	36	6	56	2-1/2	2-1/2	4	2" NPT	685
ZU-900	900	161	144	42	14	69	4	4	9	3" NPT	1040

Tank Saddles available
All tapping 1-1/4" Water Connections.
1/4" pressure switch tapping on all models.

1" NPT Spud in head for alternate motor or retention tank connection.



Models: Z-220, Z-315, Z-480



Models: ZU-525, ZU-900

For Technical Information and Automated Fax Service, call 800-527-1953. A. O. Smith Corporation reserves the right to make product changes or improvements without prior notice.