



AIR SEPARATOR

Tangential Air Separators: 1" - 24" without Strainer ASME

125 PSIG Working Pressure

Construction

Body	ASME Approved Steel
Flanges	ASME Class 150

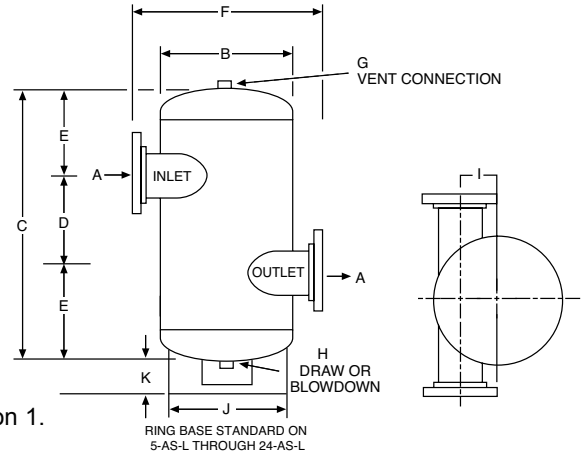
Performance

Maximum Operating Temperature	350°F (176.7°C)*
Maximum Working Pressure	125 PSIG (8.6 bar)
Warranty	1-Year

Application

- Creates a low velocity vortex that separates and removes entrained air from circulating water or anti-freeze.

- For use in closed, non-potable water systems.
- Designed and constructed per ASME Code Section VIII, Division 1.



ASME Models

Model Number	Dimensions																				Shipping Weight			
	A		B		C		D		E		F		G		H		I		J		K		Lbs	Kg
	In	mm	In	mm	In	mm	In	mm	In	mm	In	mm	In	mm	In	mm	In	mm	In	mm	In	mm		
1-ASL*	1	25	4½	114	12	305	4	102	4	102	7	178	¾	19	¾	19	1⅞	33	-	-	-	-	14	6
2-ASL	2	51	10	254	23	584	8	203	7½	191	17	432	¾	19	¾	19	3	76	-	-	-	-	41	19
2½-ASL	2½	64	10	254	23	584	8	203	7½	191	17	432	¾	19	¾	19	3	76	-	-	-	-	50	23
3-ASL	3	76	10	254	23	584	8	203	7½	191	17	432	¾	19	¾	19	3	76	-	-	-	-	56	25
4-ASL	4	102	12	305	25	635	10	254	7½	191	21	533	¾	19	¾	19	3½	89	-	-	-	-	66	30
5-ASL	5	127	16	406	34½	876	12	305	11¼	286	24	610	¾	19	¾	19	4¼	108	12¼	324	4⅝	117	175	79
6-ASL	6	152	18	457	41	1041	14	356	13½	343	26	660	¾	19	¾	19	4¼	108	14	356	4⅝	117	190	86
8-ASL	8	203	24	610	52	1321	18	457	17	432	32	813	¾	19	¾	19	5¼	146	16	406	4⅝	117	350	159
10-ASL	10	254	30	762	58	1473	21	533	18½	470	40	1016	¾	19	¾	19	7¼	197	24	610	4⅝	117	700	318
12-ASL	12	305	36	914	68	1727	26	660	21	533	46	1168	¾	19	¾	19	7¼	197	30	762	12⅝	321	912	414
14-ASL	14	356	42	1067	87	2210	30	762	28½	724	56	1422	¾	19	¾	19	13	330	30	762	13⅝	340	1853	841
16-ASL	16	406	48	1219	90	2286	32	813	29	737	64	1626	3	76	3	76	15	381	42	1067	12½	318	2610	1184
18-ASL	18	457	54	1372	102	2591	36	914	33	838	64	1626	3	76	3	76	16	406	42	1067	12⅝	314	2900	1315
20-ASL	20	508	60	1524	100	2540	30	762	35	889	70	1778	3	76	3	76	19	483	45	1143	6⅞	176	4560	2068
22-ASL	22	559	60	1524	119	3023	48	1219	35½	902	70	1778	3	76	3	76	18	457	45	1143	7	178	5320	2413
24-ASL	24	610	72	1829	131	3327	43	1092	44	1118	82	2083	3	76	3	76	22	559	45	1143	8	203	6175	2801

*Only available with NPT connection.

All dimensions and weights are approximate.

Job Name _____	Notes _____
Engineer _____	_____
Contractor _____	_____
P.O. No. _____	_____
Sales Rep. _____	_____
Model No. _____	_____

