

A[~]form

Technical data sheet



Washstands

WT.QS525H.R

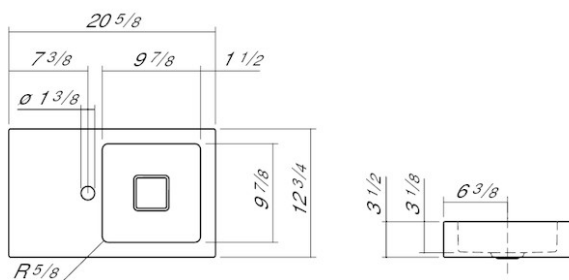
Article number: 4280000000

Design partner: busalt design

Features

Description	WT.QS525H.R
Article number	4280000000
Standard colour	White
Special surfaces	White easy-clean (XXXX XXX 400) White antibacterial (XXXX XXX 401)
Construction	with faucet hole, without overflow
Special versions	special- or matt colour
Dimensions	20 5/8 x 12 3/4 x 3 1/2"
Material	Glazed steel
Net weight	10.58 lbs
Installation	for wall connection
Accessoires	Bottle trap SI.2, Bottle trap SI.3, Angle valve cover EV.3, Towel rail in front HTH.525.1, Towel rail right HTH.220.R1
Faucet information	Optimum point of impact approx. 3 7/8 – 4 3/4" from centre of faucet hole.

Faucets with a vertical outlet and an aerator provide the optimum flow of water onto the surface below (angle of impact: 90°).



Text for invitation to tender

Washstand, rectangular, 20 5/8 – 12 3/4", basin square and positioned on the right, glazed inside and outside, height 3 1/2", with faucet hole, without overflow, including fixing set and drain valve with white glazed cap

Brand: Alape

Model: WT.QS525H.R