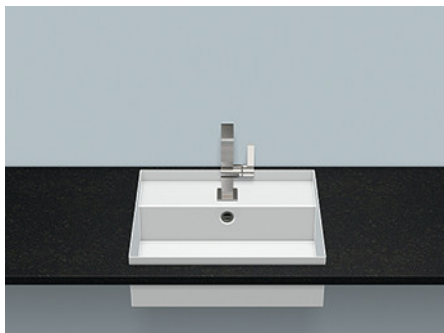


## A<sup>3</sup>form

### Technical data sheet



#### Built-in basins

#### EB.ST500H

Article number: 2235603000

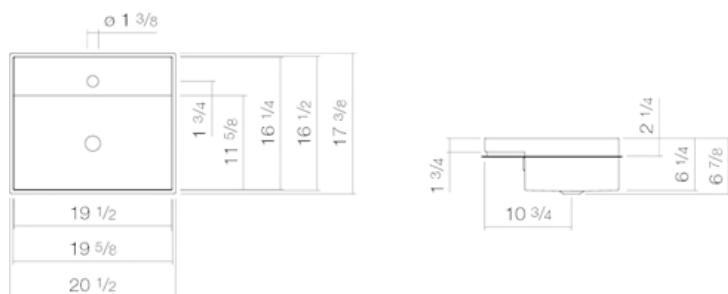
Design partner: sieger design



#### Features

Description	EB.ST500H
Article number	2235603000
Standard colour	White
Special surfaces	White easy-clean (XXXX XXX 400) White antibacterial (XXXX XXX 401)
Construction	with faucet hole, with overflow
Special versions	without faucet hole, without overflow, 3 drill holes, drill hole for lotion dispenser, special- or matt colour
Dimensions	19 5/8 x 16 1/2"
Material	Glazed steel
Net weight	26.23 lbs
Installation	for installation from below
Accessoires	Bottle trap SI.2, Bottle trap SI.3, Drain valve VT.1, Lotion dispenser LS.1
Faucet information	Optimum point of impact approx. 4 1/2 – 5 3/4" from centre of faucet hole.

Faucets with a vertical outlet and an aerator provide the optimum flow of water onto the surface below (angle of impact: 90°).



#### Text for invitation to tender

Built-in basin, rectangular, 19 5/8 x 16 1/2", divided into two levels, basin 19 1/2 x 11 5/8", basin depth 6 1/4" and faucets behind basin, 19 1/2 x 4 3/4", depth 1 5/8", basin edge extends above counter top 1", glazed inside and outside, optimised for installation in 1 1/8" counter tops, with faucet hole and overflow, including overflow set

Brand: Alape

Model: EB.ST500H