



ACCURATE
LOCK & HARDWARE
AMERICAN CRAFTED SINCE 1972

161PDP POCKET DOOR EDGE PULL

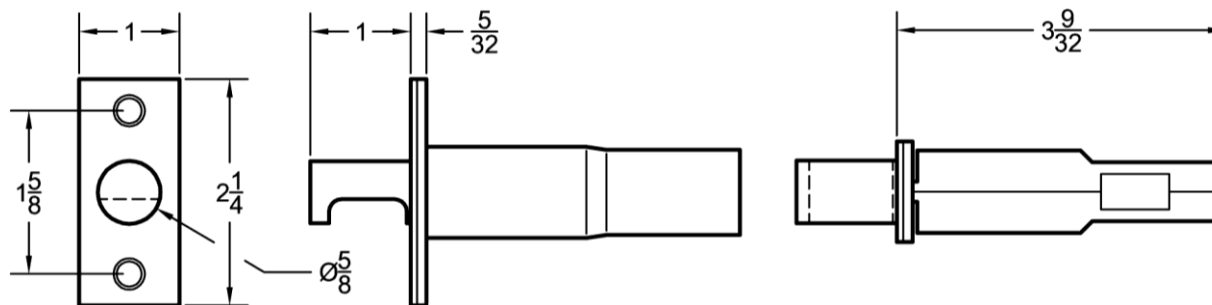
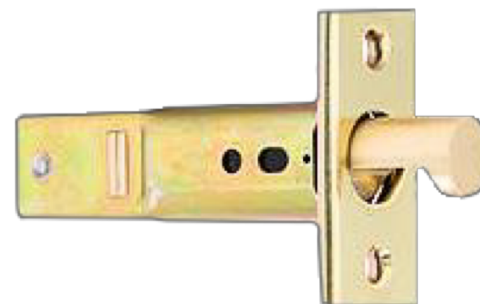
161PDP POCKET DOOR EDGE PULL TECHNICAL DETAILS

Designed to fit the ANSI 161* preparation.
For 1 3/8" or 1 3/4" interior privacy pocket doors.

**2 1/8" diameter cross bore preparation required only when pull used as a passage (without 161PDL)*

CASE: 1" diameter, fits 161 prep.

ARMOR FRONT: Brass, bronze, or stainless steel (1" x 2 1/4")



**ACCURATE LOCK & HARDWARE
MANUFACTURERS OF CUSTOM LOCKS
AND ARCHITECTURAL HARDWARE**

1 Annie Place | Stamford, CT 06902

P: 203.348.8865

F: 203.348.5234

E: sales@accuratelockandhardware.com

www.accuratelockandhardware.com

