

FHA 3838 RRF

Model number:

141480

Dimensions: 42" x 39" x 79"

Installation: Alcove

Material: AcrylX™



Standard Features:

- Available in the Midwest
- One-piece AcrylX™ shower
- Constructed to comply with the guidelines of the Fair Housing Act Design Manual
- Center drain
- Textured bottom
- Low 3 1/2" threshold for safe in and out access
- Double return flange to allow to meet 48" x

Product characteristics:

- One-Piece Unit
- Integrated Shelving
- Low Threshold

Warranty:

Lifetime limited

Code Compliant:

ANSI|FHA

Standard colors:



White (002)



Bone (004)



Biscuit (007)

Certifications

ABG products adhere to one or more of the following certifications:



Options (Visit our website for a complete list of our options)

No	Description
<input type="checkbox"/> OPT 20203-VL	18" Modern straight vertical grab bar on left wall(factory installed)
<input type="checkbox"/> OPT 20203-VR	18" Modern straight vertical grab bar on right wall(factory installed)
<input type="checkbox"/> OPT 20204-HB	24" Modern straight horizontal grab bar on back wall(factory installed)
<input type="checkbox"/> OPT 20204-HL	24" Modern straight horizontal grab bar on left wall(factory installed)
<input type="checkbox"/> OPT 20204-HR	24" Modern horizontal straight grab bar on right wall(factory installed)

FHA 3838 RRF

Model number:

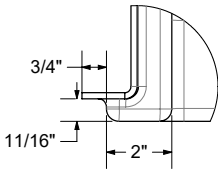
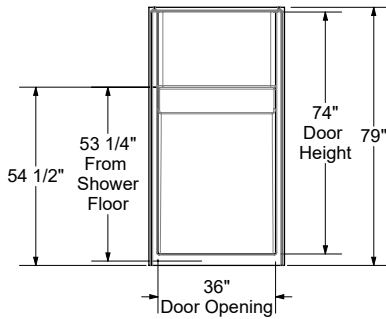
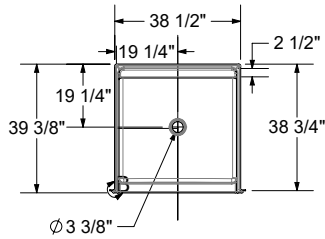
141480

Dimensions: 42" x 39" x 79"

Installation: Alcove

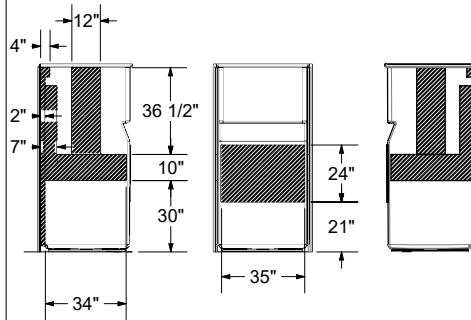
Material: AcrylX™

BASE MODEL

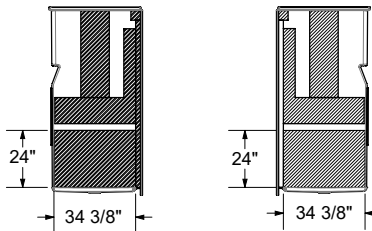


- All dimensions are approximate
- Structure measurements must be verified against the unit to ensure proper fit
- Installation to be completed in accordance with manufacturers specifications
- Do not scale drawings

STANDARD REINFORCEMENT BACKING



SEAT OPTIONAL REINFORCEMENT BACKING



THRESHOLD DETAIL



Dimensions:

41 1/2 x 39 3/8 x 79 in.

Weight:

110 lbs -

Shape:

Square

Pieces:

1

Drain location:

No seat, center drain

Project:

Contractor:

Representative:

Date:

Tel:

Notes: