

# OPS-6030-RS - ANSI Grab Bar shower

**Model number:**

141459

**Dimensions:** 63" x 33" x 79"

**Installation:** Alcove

**Material:** AcryIX™



## Standard Features:

- 1-piece roll-in shower reinforced according to FHA accessibility requirements
- One horizontal L-shaped grab bar (27" x 37") and one 18" vertical grab bar
- Center drain, textured bottom
- 3/4" reduced skirt and 1/2" high threshold
- Base model with ANSI grab bars

## Product characteristics:

- One-Piece Unit
- ADA-ANSI
- Grab Bars & Seats Available

## Warranty:

Lifetime limited

## Code Compliant:

ANSI

## Standard colors:



White (002)



Bone (004)



Biscuit (007)

## Certifications

ABG products adhere to one or more of the following certifications:



## Options (Visit our website for a complete list of our options)

No	Description
<input type="checkbox"/> OPT 20259	60" Curtain rod
<input type="checkbox"/> OPT 20059-084	Recessed soap dish (Drilled, not installed) in chrome

# OPS-6030-RS - ANSI Grab Bar shower

**Model number:**

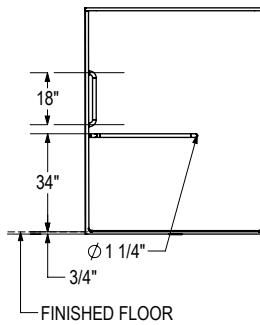
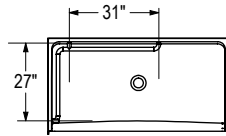
141459

**Dimensions:** 63" x 33" x 79"

**Installation:** Alcove

**Material:** AcrylX™

BASE MODEL WITH ANSI - L-SHAPED GRAB BAR PACKAGE  
LEFT SIDE SHOWN  
RIGHT SIDE SYMMETRICAL



All dimensions are approximate. Structure measurements must be verified against the unit to ensure proper fit.

## Dimensions:

62 7/8 x 33 1/4 x 78 3/4 in.

## Weight:

195 lbs -

## Shape:

Rectangular

## Pieces:

1

## Drain location:

Left-hand grab bar, center

Right-hand grab bar, center

Project:

Contractor:

Representative:

Date:

Tel:

Notes: