

# OPS-3636-RS RRF - ANSI Grab Bar and Seat Shower

**Model number:**

141411

**Dimensions:** 39" x 39" x 79"

**Installation:** Alcove

**Material:** AcrylX™



## Standard Features:

- 1-piece transfer shower reinforced according to FHA accessibility requirements
- One horizontal L-shaped grab bar (34 3/8" x 18"), one 18" vertical grab bar and L-shaped fold-up phenolic white seat
- Outward facing return flanges
- Center drain
- Textured bottom
- 3/4" reduced skirt and 1/2" high threshold

## Product characteristics:

- One-Piece Unit
- ADA-ANSI
- Grab Bars & Seats Available

## Warranty:

Lifetime limited

## Code Compliant:

ANSI

## Standard colors:



White (002)



Bone (004)



Biscuit (007)

## Certifications

ABG products adhere to one or more of the following certifications:



## Options (Visit our website for a complete list of our options)

No	Description
<input type="checkbox"/> OPT 10225	36" Chrome curtain rod
<input type="checkbox"/> OPT 20059-084	Recessed soap dish (Drilled, not installed) in chrome

# OPS-3636-RS RRF - ANSI Grab Bar and Seat Shower

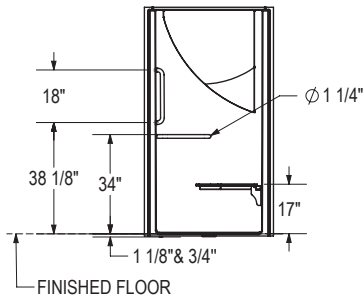
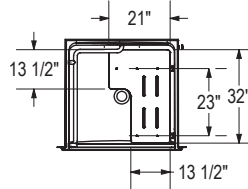
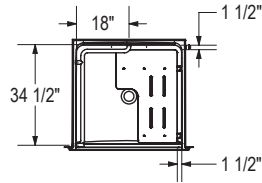
**Model number:** 141411

**Dimensions:** 39" x 39" x 79"

**Installation:** Alcove

**Material:** AcrylX™

BASE MODEL WITH ANSI GRAB BAR & SEAT PACKAGE  
LEFT SIDE SHOWN  
RIGHT SIDE SYMMETRICAL



All dimensions are approximate. Structure measurements must be verified against the unit to ensure proper fit.

<b>Dimensions:</b>
38 3/4 x 39 x 78 3/4 in.
<b>Weight:</b>
162 lbs -
<b>Shape:</b>
Square
<b>Pieces:</b>
1
<b>Drain location:</b>
Left-hand grab bar, center
Right-hand grab bar, center

Project: \_\_\_\_\_

Contractor: \_\_\_\_\_

Representative: \_\_\_\_\_

Date: \_\_\_\_\_

Tel: \_\_\_\_\_

Notes: \_\_\_\_\_

\_\_\_\_\_

\_\_\_\_\_