

OPS-3636-RS - L-shaped and Vertical Grab Bar and Seat Shower

Model number:

141325

Dimensions: 39" x 39" x 79"

Installation: Alcove

Material: AcryIX™



Standard Features:

- 1-piece transfer shower reinforced according to FHA accessibility requirements
- One horizontal L-shaped grab bar (34 3/8" x 18"), one 18" vertical grab bar and L-shaped fold-up phenolic white seat
- Center drain
- Textured bottom
- 3/4" reduced skirt and 1/2" high threshold

Product characteristics:

- One-Piece Unit
- Aging in place
- Grab Bars & Seats Available

Warranty:

Lifetime limited

Standard colors:



White (002)



Bone (004)



Biscuit (007)

Certifications

ABG products adhere to one or more of the following certifications:



Options (Visit our website for a complete list of our options)

No	Description
<input type="checkbox"/> OPT 10225	36" Chrome curtain rod
<input type="checkbox"/> OPT 20059-084	Recessed soap dish (Drilled, not installed) in chrome

OPS-3636-RS - L-shaped and Vertical Grab Bar and Seat Shower

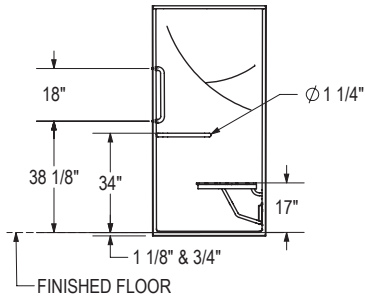
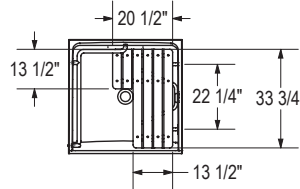
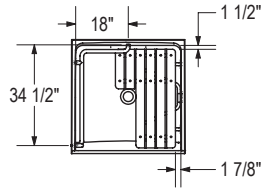
Model number: 141325

Dimensions: 39" x 39" x 79"

Installation: Alcove

Material: AcryIX™

BASE MODEL WITH ANSI GRAB BAR & SEAT PACKAGE
LEFT SIDE SHOWN
RIGHT SIDE SYMMETRICAL



All dimensions are approximate. Structure measurements must be verified against the unit to ensure proper fit.

Dimensions:

38 3/4 x 39 x 78 3/4 in.

Weight:

162 lbs -

Shape:

Rectangular

Pieces:

1

Drain location:

- Left-hand grab bar, center
- Right-hand grab bar, center

Project:

Contractor:

Representative:

Date:

Tel:

Notes: