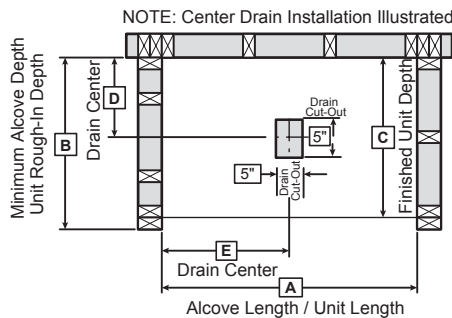


TECHNICAL SPECIFICATIONS

GT-4260AP

MODEL NUMBER 141482

DIMENSIONS: 60" x 42" x 27" Gelcoat



Model	A	B	C	D	E
141482	60"	42"	40 1/2"	27 1/8"	30"

STANDARD FEATURES

- 5 1/2 inch Wrap around splash
- Deck for faucet
- Center drain
- Alcove installation
- 16 7/8 inch sump

UNIQUE FEATURES

- Above-the-Floor Rough (AFR)
- Tiling Flange

OPTIONS

- In-line heater (factory-installed)
- Pump position opposite standard position

SYSTEMS

☰ Homestead **DOOR**

SELECTION

Combine with AKER's complete shower door offering visit www.akerbymax.com

CERTIFICATIONS

AKER products adhere to one or more of the following certifications:



Project :

Contractor :

AKER Representative : Tel :

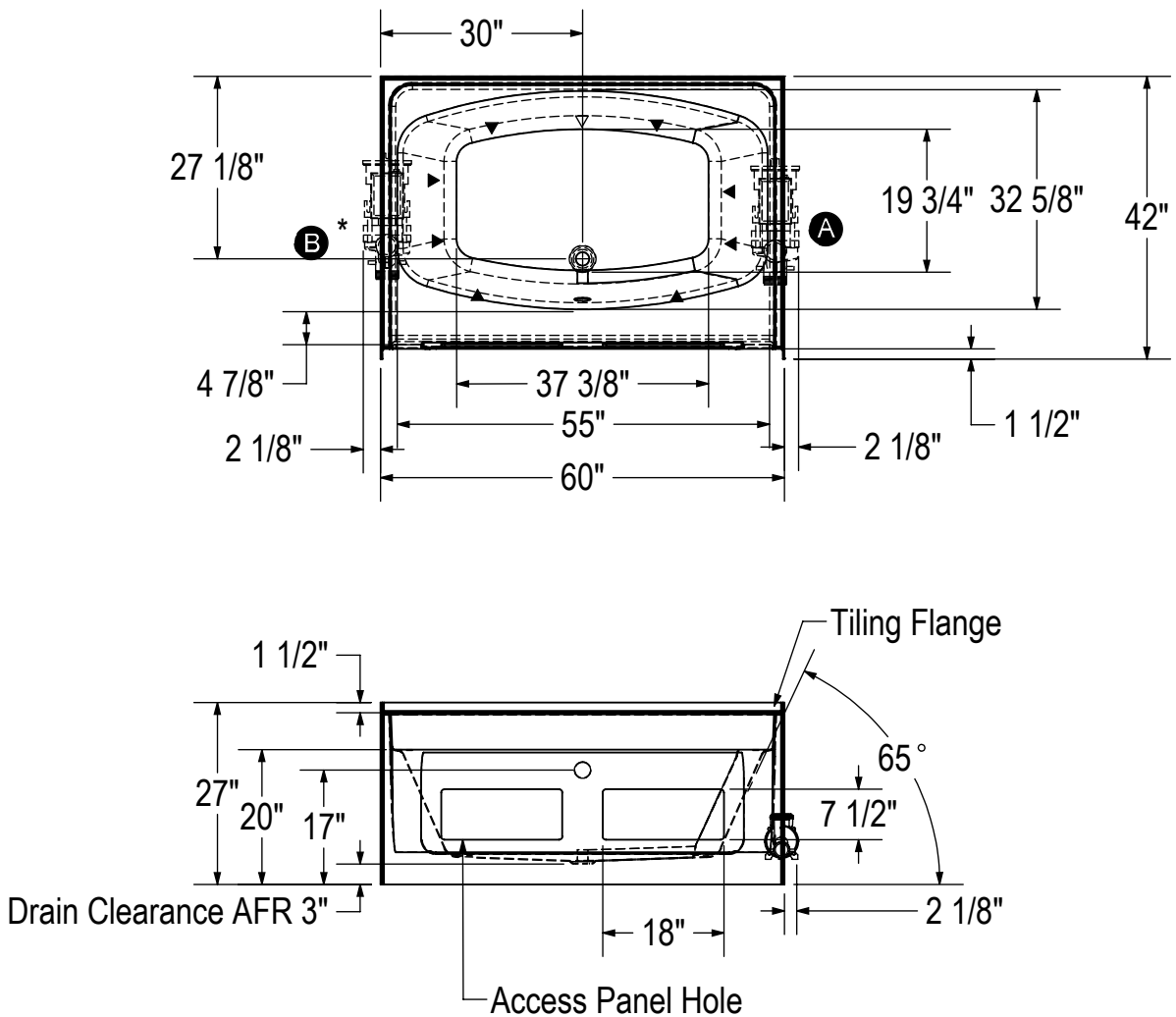
Date :

TECHNICAL SPECIFICATIONS

GT-4260AP

MODEL NUMBER 141482

TECHNICAL DRAWINGS



- Ⓐ : Indicate standard pump location
- Ⓑ : Indicate optional pump location *(must order Option in price guide)
- ▲ : Indicates whirlpool jet positioning
- ↻ : Indicates suction positioning

All dimensions are approximate. Structure measurements must be verified against the unit to ensure proper fit.