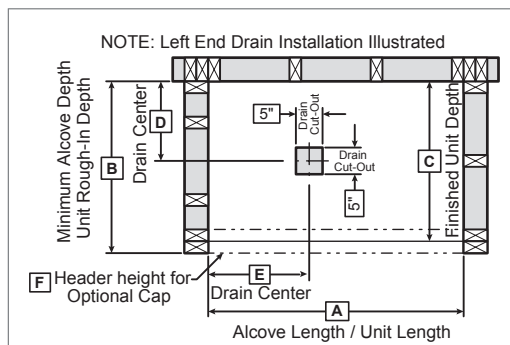
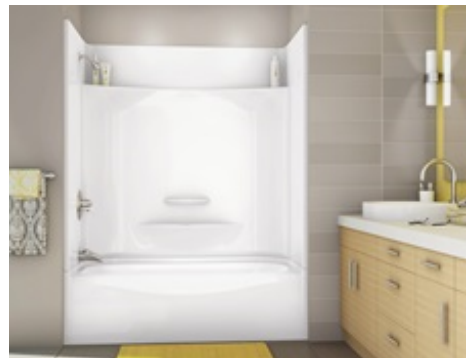


# TECHNICAL SPECIFICATIONS

## KDTS 3060 AFR

**MODEL NUMBER 142007**

DIMENSIONS: 59 7/8" x 30 1/8" x 79 5/8" Gelcoat



Model	A	B	C	D	E
142006	60"	31"	30"	14 5/8"	8 1/8"

### STANDARD FEATURES

- Four-piece gelcoated fiberglass tub-shower with PIN system for easy front installation
- Large top corner shelves, wide soap dish and standard acrylic handle (opt. metallic finishes)
- Right or left-hand drain • Textured floor • Bottom bathing well: 44 1/8" L x 20" W
- Optional unique features:  
• Reinforced walls and grab bars  
• 14 3/8 deep sump
- Product also available in Above-the-Floor Rough (AFR)

### UNIQUE FEATURES

- PIN system
- Above-the-Floor Rough (AFR)

### OPTIONS

- Shower base only KDTS 3260 with pin system
- Side walls (right and left) for KDTS 2954, KDTS 3060 and KDS 3060
- Back wall for KDTS 3060, KDTS 3260, KDS 3060 and KDS 3460
- Pre-assembled unit
- 18" Modern straight grab bar
- 24" Modern straight grab bar

### SYSTEMS

Homestead **DOOR**

### SELECTION

Combine with AKER's complete shower door offering visit **CERTIFICATIONS** AKER products adhere to one or more of the following certifications:  
[www.akerbymax.com](http://www.akerbymax.com)



Project : .....

Contractor : .....

AKER Representative : ..... Tel : .....

Date : .....

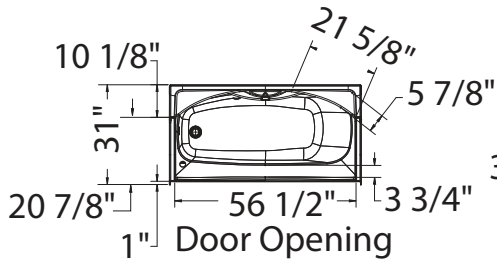
# TECHNICAL SPECIFICATIONS

## KDTS 3060 AFR

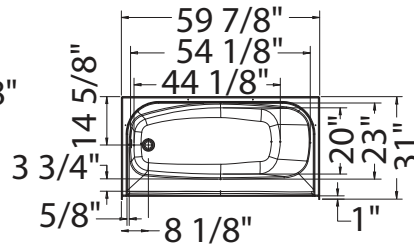
MODEL NUMBER 142007

### TECHNICAL DRAWINGS

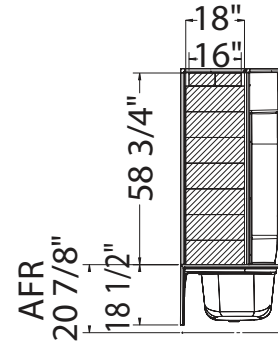
#### STANDARD



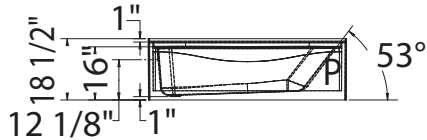
#### NO SYSTEM



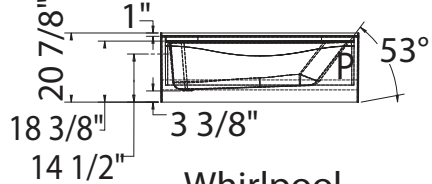
#### REINFORCEMENT BACKING OPTION 20212-L Shown OPTION 20212-R Symetrical



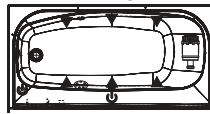
#### NOT ABOVE-THE-FLOOR



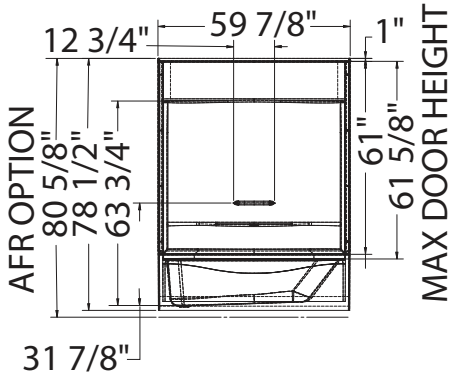
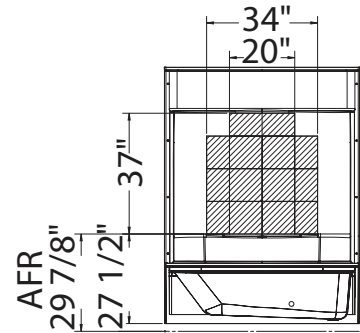
#### ABOVE-THE-FLOOR



#### Whirlpool

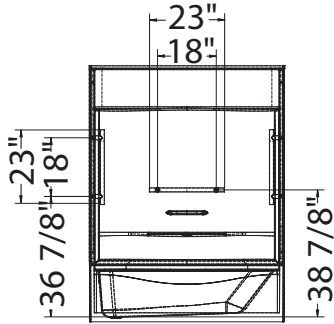


#### OPTION 20212-B

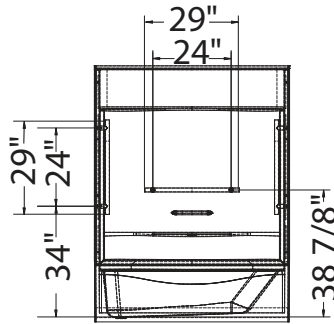


#### GRAB BARS

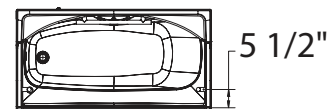
#### OPTION 20203



#### OPTION 20204



#### OPTION 20203-20204



( ▲ ): Indicates Whirlpool jets positioning  
( △ ): Indicates suction positioning

All dimensions are approximate. Structure measurements must be verified against the unit to ensure proper fit.