



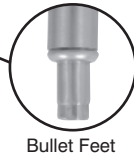
STAINLESS STEEL
TABLE WITH SINK
 Conforms To NSF 61/9 Lead Free Requirements



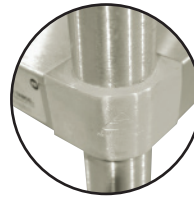
Item #: _____ Qty #: _____
 Model #: _____
 Project #: _____



Rolled Rim Edge on
 Front & Square
 Edges on Side & Back



Bullet Feet



Featuring as Standard:
“THE PROVEN”
 ORIGINAL ADVANCE TABCO
**Adjustable Undershelf
 with Die Cast Leg Clamp**

KMS-11B-305R Shown

FEATURES:

- Top is furnished with 1 5/8” sanitary rolled rim edge on front and square sides, and a 5” splash with a 1” return on the rear side.
- THREE hat channels stud welded to reinforce and maintain a level working surface.
- Pre-engineered welded angle adapters insure ease of future drawer installation.
- Aluminum die cast “leg-to-shelf” clamp secures shelf to leg eliminating unsightly nuts and bolts. Undershelf is adjustable.
- Stainless steel 16” x 20” x 12” sink bowl integrally welded to top.
- K-50 deck mounted lead free compliant faucet included.

CONSTRUCTION:

- All TIG welded. Exposed weld areas polished to match adjacent surfaces.
- Entire top mechanically polished to a satin finish.
- Top is sound deadened.
- Roll formed embossed galvanized hat channels are secured to top by means of structural adhesive and weld studs.
- Gussets welded to support hat channels.

MATERIAL:

- TOP is 16 gauge stainless steel type “304” series.
- SHELF is 18 gauge stainless steel type “430” series.
- LEGS are 1 5/8” diameter, tubular stainless steel with stainless steel gussets and 1” adjustable stainless steel bullet feet.

30” WIDE Model #	Length (L)	Sink Location	Approx. Weight	Approx. Cu. Ft.
KMS-11B-305L	60”	Left	150 lbs.	18
KMS-11B-305R	60”	Right	150 lbs.	18
KMS-11B-306L	72”	Left	180 lbs.	22
KMS-11B-306R	72”	Right	180 lbs.	22

Choose Left or Right Sink Position

WARNING: Equipment that include faucets on this page may contain a chemical known to the State of California to cause cancer, birth defects or other reproductive harm.



Customer Service Available To Assist You **1-800-645-3166** 8:30 am - 7:00 pm E.S.T.

For Orders & Customer Service:
 Email: customer@advancetabco.com or Fax: 631-242-6900

For Smart Fabrication™ Quotes:
 Email: smartfab@advancetabco.com or Fax: 631-586-2933

DETAILS and SPECIFICATIONS

TOL ± .500"

ALL DIMENSIONS ARE TYPICAL

