



STAINLESS STEEL

STAINLESS STEEL COVERS

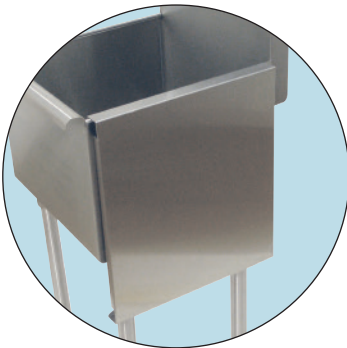
For "400" and "600" Series One Compartment Budget Sinks



Item #: _____ Qty #: _____

Model #: _____

Project #: _____



**Stores Conveniently
On Side Of Sink**

FEATURES:

Sides turned down to secure cover to sink.
Surfaces and to a satin finish.

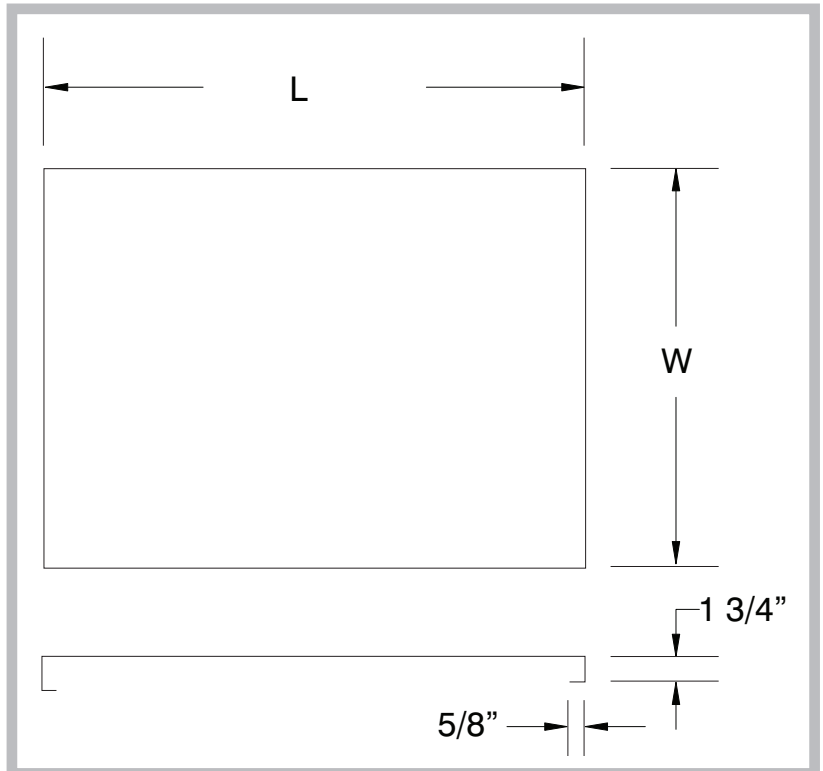
CONSTRUCTION:

16 ga, type "201" stainless steel.

DIMENSIONS and SPECIFICATIONS

TOL ± .500"

ALL DIMENSIONS ARE TYPICAL



MODEL	Fits Bowl: W x L	Overall Size W x L	Wt.
LSC-81	18" x 18"	17 3/4" x 20 3/8"	20 lbs.
LSC-24	21" x 24"	20 3/4" x 26 3/8"	21 lbs.
LSC-242	24" x 24"	23 3/4" x 26 3/8"	22 lbs.
LSC-36	24" x 36"	20 3/4" x 36 3/8"	22 lbs.



Customer Service Available To Assist You 1-800-645-3166 8:30 am - 7:00 pm E.S.T.

For Orders & Customer Service:

Email: customer@advancetabco.com or Fax: 631-242-6900

For Smart Fabrication™ Quotes:

Email: smartfab@advancetabco.com or Fax: 631-586-2933