

Item #: _____ Qty #: _____
 Model #: _____
 Project #: _____



*Flat Top
w/ K-50
Deck Mount
Faucet Shown*



*10" Backsplash
w/ K-1
Splash Mount
Faucet Shown*

Includes Faucet & K-6 Basket Drain(s)

Flat Top, 1", 1-1/2" & 5 Backsplash Include Deck Mount Faucet

- Single Sink Bowl provided with K-50 Swing Spout Faucet
- Double Sink Bowls provided with K-53 Swing Spout Faucet

10" Backsplash Include Splash Mount Faucet

- Single & Double Sink Bowls provided with K-1 Swing Spout Faucet
- Splash Mount Faucet Available On 5" Backsplash - Add TA-11Z

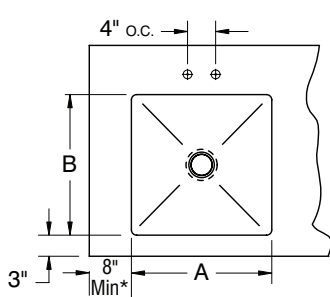
Size		Single Bowl	Double Bowl
A	B	Model#	Model#
10"	14" x 5"	TA-11Q	TA-11Q-2†
10"	14" x 10"	TA-11F	TA-11F-2†
14"	16" x 12"	TA-11J	TA-11J-2
16"	20" x 8"	TA-11A**	TA-11A-2**
16"	20" x 12"	TA-11B**	TA-11B-2**
16"	20" x 14"	TA-11V**	TA-11V-2**
16"	24" x 14"	TA-11K**	TA-11K-2**
18"	18" x 14"	TA-11N	TA-11N-2
18"	24" x 14"	TA-11L	TA-11L-2
20"	20" x 8"	TA-11C*	TA-11C-2*
20"	20" x 12"	TA-11D*	TA-11D-2*
20"	20" x 14"	TA-11W*	TA-11W-2*
20"	24" x 14"	TA-11P	TA-11P-2
20"	30" x 14"	TA-11S*	TA-11S-2*
24"	24" x 14"	TA-11E*	TA-11E-2*
24"	30" x 14"	TA-11T*	TA-11T-2*
24"	36" x 14"	TA-11R*	TA-11R-2*
28"	20" x 12"	TA-11G*	TA-11G-2*

* Only Installed In Tables 30" Wide or Wider

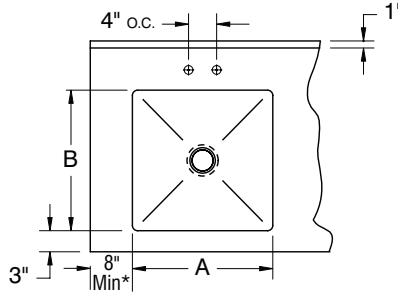
** Bowls Are Turned In 24" Wide Tables

† K-50 Swing Spout Faucet (Double Bowl)

FLAT TOP, 1" or 1-1/2" REAR SPLASH

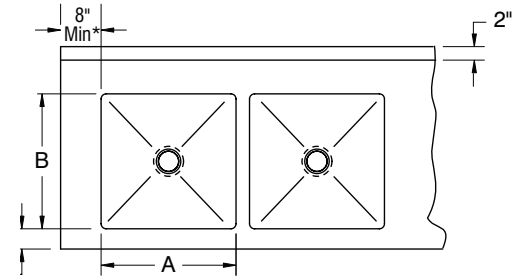


5" REAR SPLASH with 1" RETURN



*4" minimum on enclosed base tables

10" REAR SPLASH with 2" RETURN



WARNING: Equipment that include faucets on this page may contain a chemical known to the State of California to cause cancer, birth defects or other reproductive harm.

Faucets & Accessories

- ___ **K-2B** Poly-Vance Sink Cutting Board for 14" x 16" Deep Drawn Bowls
- ___ **K-2C** Poly-Vance Sink Cutting Board for 16" x 20" Deep Drawn Bowls
- ___ **K-2D** Poly-Vance Sink Cutting Board for 18" x 24" Deep Drawn Bowls
- ___ **K-2E** Poly-Vance Sink Cutting Board for 20" x 20" Deep Drawn Bowls
- ___ **K-2F** Poly-Vance Sink Cutting Board for 24" x 24" Deep Drawn Bowls
- ___ **K-2J** Poly-Vance Sink Cutting Board for 18" x 18" Deep Drawn Bowls
- ___ **K-4** Lever Drain Bracket
- ___ **K-5** Lever Drain
- ___ **K-12** Deck Mounted Soap Dispenser
- ___ **K-15** Lever Drain With Overflow
- ___ **K-50** 8" Deck Mounted 4" O.C. Swing Spout Faucet
- ___ **K-50OMIT** Omit Swing Spout
- ___ **K-52** 3 1/2" Spout Deck Mounted 4" O.C. Gooseneck Faucet
- ___ **K-52OMIT** Omit Swing Spout Gooseneck Faucet
- ___ **K-53** 12" Deck Mounted 4" O.C. Swing Spout Faucet
- ___ **K-54** 8-1/4" Water Filler Faucet
- ___ **K-54A** 12" Water Filler Faucet

- ___ **K-55** 8 1/2" Spout 4" O.C. Deck Mounted Gooseneck Faucet
- ___ **K-60** 4" O.C. Splash Mounted Gooseneck Faucet
- ___ **K-62** X.H.D. 4" O.C. Deck Mounted Gooseneck Faucet
- ___ **K-105** 14" Splash Mounted 8" O.C. Faucet
- ___ **K-112** Extra Heavy Duty 12" Splash Mounted Faucets
- ___ **K-316-LUHA** Wrist Handles For Splash Mounted Faucets
- ___ **K-350** Residential Finish & Packaging
- ___ **K-452** 6" x 9" Control Bracket
- ___ **K-453** 14" x 16" Control Bracket
- ___ **K-460** Installation Of Disposal Cone w/ 6" x 9" Control Bracket
- ___ **K-461** Installation Of Collar w/ 6" x 9" Control Bracket
- ___ **K-470** 14" Deep Bowls
- ___ **K-472** Faucet Hole Revision
- ___ **DTA-100** Prerinse Basket for 20" x 20" Bowls
- ___ **DTA-125** Prerinse Basket for 16" x 20" Bowls