



PRESTIGE
Signature Series

STAINLESS STEEL

Hand Sink With Drainboard



Item #: _____ Qty #: _____
 Model #: _____
 Project #: _____

FEATURES:

One Piece Deep Drawn 14" x 10" x 7" sink bowl with 2" drain and strainer plate

K-125 splash mount swing spout faucet

Sturdy stainless steel base cabinet
 Removable perforated drainboard top

Stainless steel legs with adjustable stainless steel bullet feet
 7" backsplash.

MECHANICAL:

Drainboard: 1" IPS drain

Sink: 1-1/2" IPS drain

MATERIAL:

20 gauge, 300 stainless steel

Drainboard: 18 gauge, 300 stainless steel

K-125 Sink Faucet: Splash mounted, chrome plated brass body, chrome plated handle

Legs: 18 gauge 1 5/8" O.D. with 1" adjustable stainless steel bullet feet

OPTIONAL:

SU-77 - Modify to 20" wide Unit

Model #	Size L x W x H	Approx. Weight	Approx. Cu. Ft.
PRSCS-25-24	24" x 25" x 36"	74 lbs.	19

REPLACEMENT PARTS



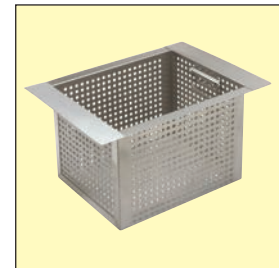
K-125
6" Splash Mounted Faucet



A-10
1" Water Outlet
For Drainboard



K-63
1-1/2" Basket Drain



A-16
Perforated Basket

WARNING: Faucets on this page may expose you to chemicals, including lead, that are known to the State of California to cause cancer or birth defects or other reproductive harm. For more Info., visit www.p65warnings.ca.gov.



Customer Service Available To Assist You **1-800-645-3166** 8:30 am - 7:00 pm E.S.T.

For Orders & Customer Service:
 Email: customer@advancetabco.com or Fax: 631-242-6900

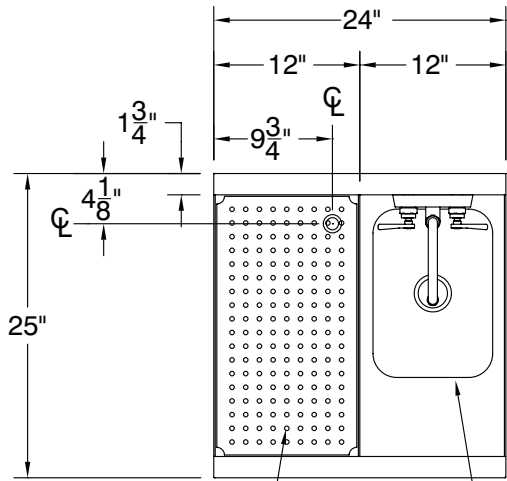
For Smart Fabrication™ Quotes:
 Email: smartfab@advancetabco.com or Fax: 631-586-2933

DIMENSIONS and SPECIFICATIONS

TOL Overall: ± .500" Interior: ± .250"

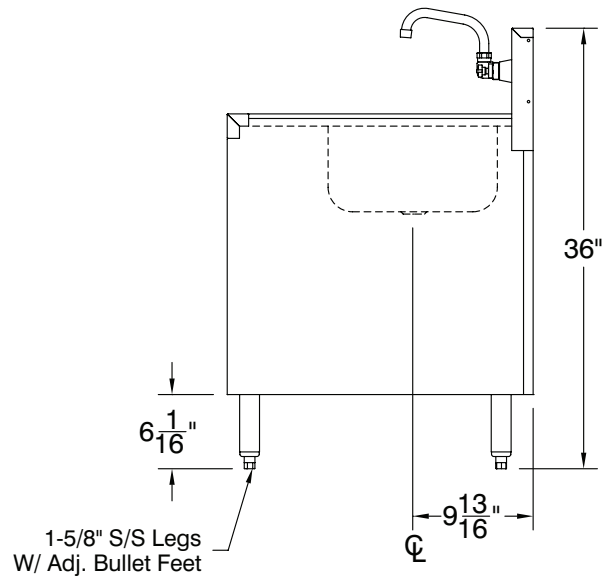
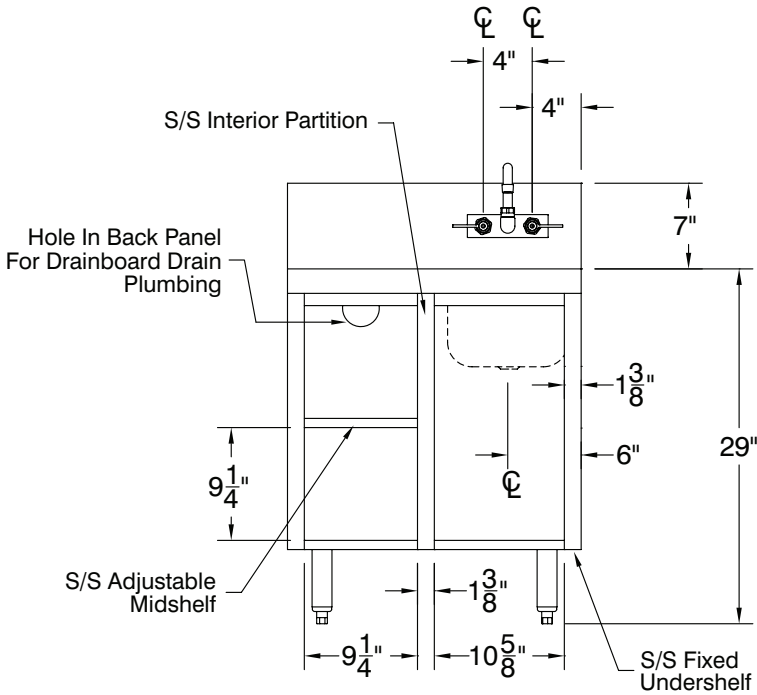
ALL DIMENSIONS ARE TYPICAL

PRSCS-25-24



Drain Pan With 1" I.P.S. Drain
And Removable Drainboard

10" x 14" x 7" Sink



1-5/8" S/S Legs
W/ Adj. Bullet Feet

74 lbs.

