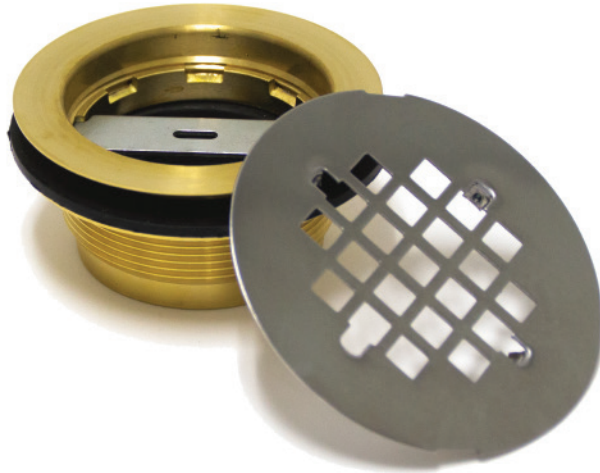




K-16 3-1/2" REPLACEMENT DRAIN FOR 9-OP SERIES FLOOR MOP SINKS



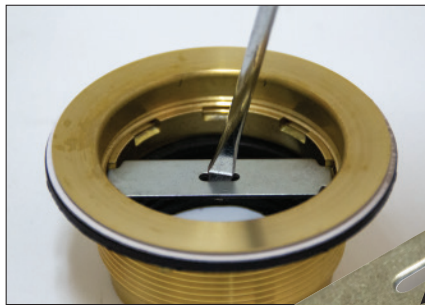
Item #: _____ Qty #: _____
 Model #: _____
 Project #: _____

FEATURES:

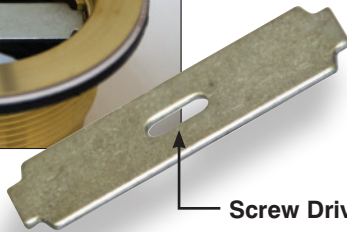
- 3-1/2" drain opening.
- Connects to 2" Waste Pipe.
- Removable Strainer Plate.
- Includes Compression Ring Key.

MATERIAL:

- Brass body & Lock Nut.
- Stainless Steel Strainer Plate.



Includes Compression Ring Key For Securing Drain To Waste Line

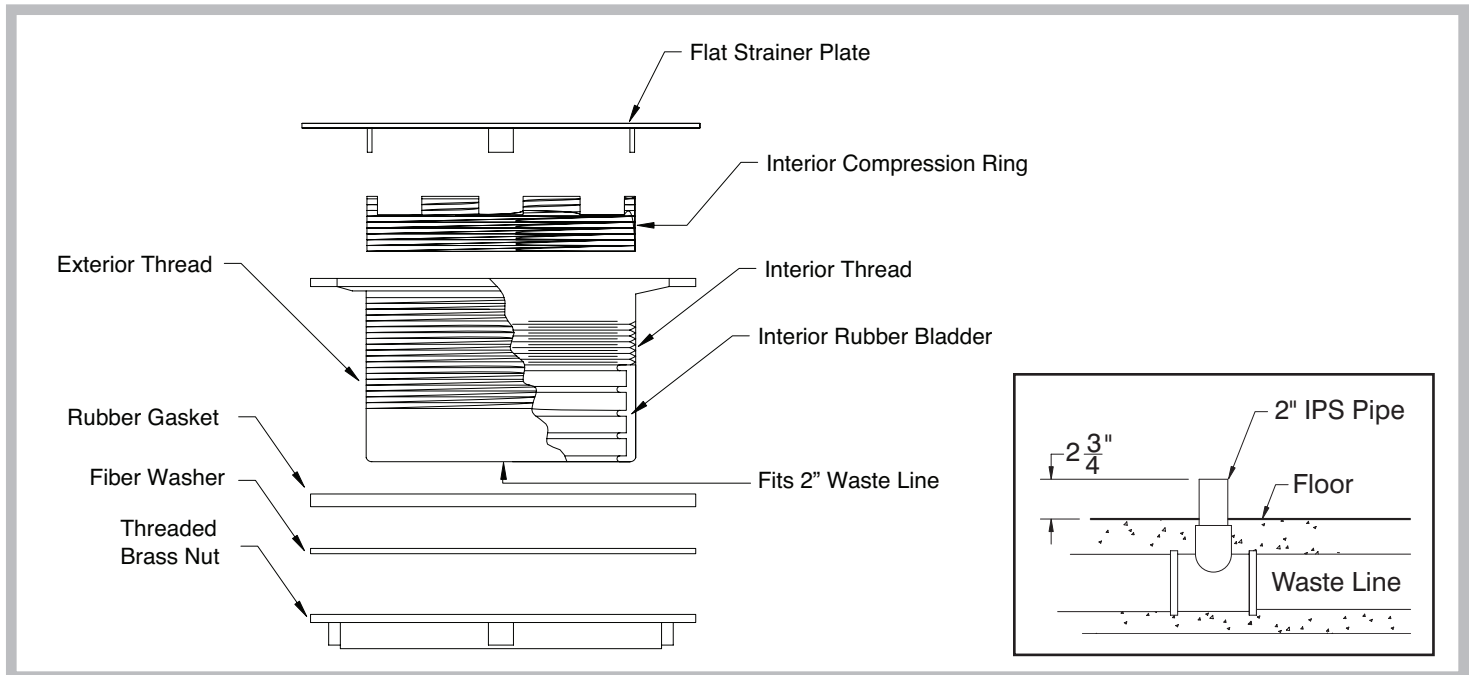


Screw Driver Slot



Click This Link To View Assembly Sheet

DIMENSIONS and SPECIFICATIONS



Customer Service Available To Assist You **1-800-645-3166** 8:30 am - 7:00 pm E.S.T.

For Orders & Customer Service:
 Email: customer@advancetabco.com or Fax: 631-242-6900

For Smart Fabrication™ Quotes:
 Email: smartfab@advancetabco.com or Fax: 631-586-2933