



STAINLESS STEEL

SPECLINE 14 Ga. Fabricated Sinks NSF

Double Compartments



FS-2-1818-18RL Shown



FS-2-1818 Shown



FS-2-1818-18R Shown

Item #: _____ Qty #: _____
 Model #: _____
 Project #: _____



Rolled Rim Edge
For Additional
Strength

FEATURES:

- Full Skirt Design
- Backsplash has tile edge for ease of installation.
- Sink bowls are 3/4" covered corner and meet NSF requirements.
- Rolled Rim Edge for additional strength.
- Sink Bowls are 14" deep for greater capacity.
- Stainless Steel Legs with adjustable stainless steel bullet feet.
- Adjustable front-to-back cross-bracing.

CONSTRUCTION:

- All TIG welded.
- Welded areas blended to match adjacent surfaces and to a satin finish.

MATERIAL:

- 1 5/8" diameter stainless steel legs with 1" adjustable stainless steel bullet feet.
- Entire unit is 14 gauge 304 stainless steel.
- Stainless Steel Gussets.

MECHANICAL:

- Supply is 1/2" IPS hot & cold.
- Faucet holes on 8" centers.
- Faucets are not included (**see accessories**).
- Waste drains are 1 1/2" IPS S/S basket type, located in center of sink bowl, and are included.

MODEL #	BOWL SIZE	O.A. Length	# of Drbds.
FS-2-1620	16" x 20"	37"	0
FS-2-1620-18RorL	16" x 20"	52.5"	1
FS-2-1620-18RL	16" x 20"	68"	2
FS-2-1524	15" x 24"	35"	0
FS-2-1524-24RorL	15" x 24"	56.5"	1
FS-2-1524-24RL	15" x 24"	78"	2
FS-2-1818	18" x 18"	41"	0
FS-2-1818-18RorL	18" x 18"	56.5"	1
FS-2-1818-18RL	18" x 18"	72"	2
FS-2-1824	18" x 24"	41"	0
FS-2-1824-18RorL	18" x 24"	56.5"	1
FS-2-1824-24RorL	18" x 24"	62.5"	1
FS-2-1824-18RL	18" x 24"	72"	2
FS-2-1824-24RL	18" x 24"	84"	2
FS-2-2024	20" x 24"	45"	0
FS-2-2424	24" x 24"	53"	0
FS-2-2424-18RorL	24" x 24"	68.5"	1
FS-2-2424-24RorL	24" x 24"	74.5"	1
FS-2-2424-18RL	24" x 24"	84"	2
FS-2-2424-24RL	24" x 24"	96"	2
FS-2-2030-18RorL	20" x 30"	60.5"	1
FS-2-2030-18RL	20" x 30"	76"	2
FS-2-2030-24RorL	20" x 30"	66.5"	1
FS-2-2030-24RL	20" x 30"	88"	2
FS-2-3024	30" x 24"	65"	0
FS-2-3024-24RorL	30" x 24"	86.5"	1
FS-2-3024-24RL	30" x 24"	108"	2

ACCESSORIES	Model #	Qty
DRAINS		
FAUCETS		

OPTIONAL MODIFICATIONS:

K-450	Extend Drainboard Length <i>(Drainboards over 36" Are Not Creased or Pitched.)</i>
K-470	Modify Bowl Depth

[See our full line of Modifications & Accessories on the web!](#)



Customer Service Available To Assist You 1-800-645-3166 8:30 am - 7:00 pm E.S.T.

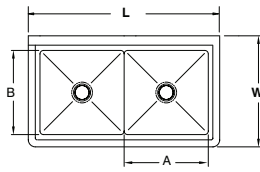
For Orders & Customer Service:
 Email: customer@advancetabco.com or Fax: 631-242-6900

For Smart Fabrication™ Quotes:
 Email: smartfab@advancetabco.com or Fax: 631-586-2933

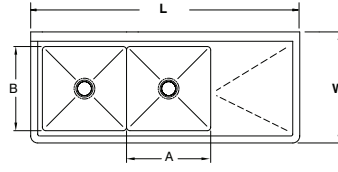
DIMENSIONS and SPECIFICATIONS

TOL Overall: ± .500"
Interior: ± .250"

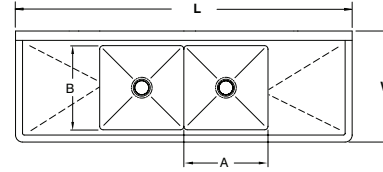
ALL DIMENSIONS ARE TYPICAL



2 COMP - NO DRBDS



2 COMP - 1 DRBD



2 COMP - 2 DRBDS



MODEL #	Length L	Width W	Bowl Size A & B	Drbd. Length C	# of Drbds.	Drbd. Location	Wt	Cu.
FS-2-1620	37"	26"	16" x 20"	0	0	None	100 lbs	20
FS-2-1620-18R or L	52.5"	26"	16" x 20"	18"	1	Specify	120 lbs	27
FS-2-1620-18RL	68"	26"	16" x 20"	18"	2	Both	143 lbs	34
FS-2-1524	35"	30"	15" x 24"	0	0	None	93 lbs	23
FS-2-1524-24R or L	56.5"	30"	15" x 24"	24"	1	Specify	115 lbs	41
FS-2-1524-24RL	78"	30"	15" x 24"	24"	2	Both	130 lbs	47
FS-2-1818	41"	24"	18" x 18"	N/A	0	None	98 lbs	18
FS-2-1818-18R or L	56.5"	24"	18" x 18"	18"	1	Specify	110 lbs	26
FS-2-1818-18RL	72"	24"	18" x 18"	18"	2	Both	125 lbs	30
FS-2-1824	41"	30"	18" x 24"	0	0	None	149 lbs	26
FS-2-1824-18R or L	56.5"	30"	18" x 24"	18"	1	Specify	169 lbs	35
FS-2-1824-24R or L	62.5"	30"	18" x 24"	24"	1	Specify	190 lbs	39
FS-2-1824-18RL	72"	30"	18" x 24"	18"	2	Both	220 lbs	44
FS-2-1824-24RL	84"	30"	18" x 24"	24"	2	Both	240 lbs	51
FS-2-2024	45"	30"	20" x 24"	0	0	None	169 lbs	28
FS-2-2424	53"	30"	24" x 24"	0	0	None	179 lbs	33
FS-2-2424-18R or L	68.5"	30"	24" x 24"	18"	1	Specify	200 lbs	42
FS-2-2424-24R or L	74.5"	30"	24" x 24"	24"	1	Specify	220 lbs	46
FS-2-2424-18RL	84"	30"	24" x 24"	18"	2	Specify	245 lbs	51
FS-2-2424-24RL	96"	30"	24" x 24"	24"	2	Specify	270 lbs	58
FS-2-2030-18R or L	60.5"	36"	20" x 30"	18"	1	Specify	250 lbs	45
FS-2-2030-18RL	76"	36"	20" x 30"	18"	2	Both	260 lbs	54
FS-2-2030-24R or L	66.5"	36"	20" x 30"	24"	1	Specify	255 lbs	48
FS-2-2030-24RL	88"	36"	20" x 30"	24"	2	Both	270 lbs	61
FS-2-3024	65"	30"	30" x 24"	0	0	None	265 lbs	40
FS-2-3024-24R or L	86.5"	30"	30" x 24"	24"	1	Specify	300 lbs	52
FS-2-3024-24RL	108"	30"	30" x 24"	24"	2	Both	320 lbs	64

