



STAINLESS STEEL  
**HAND SINKS**  
**A.D.A COMPLIANT LAVATORIES**  
 Conforms To NSF 61/9 Lead Free Requirements



7-PS-25



7-PS-75



7-PS-26

Item #: \_\_\_\_\_ Qty #: \_\_\_\_\_  
 Model #: \_\_\_\_\_  
 Project #: \_\_\_\_\_

**FEATURES:**

One piece **Deep Drawn** sink bowl design.  
 Sink bowl is 16" x 14" x 5".  
 All sink bowls have a large liberal radii with a minimum dimension of 2" and are rectangular in design for increased capacity.  
 1 1/2" stainless steel drain with strainer plate.

**Additional Specific Features:**

- 7-PS-25** 6" Extended deck mounted gooseneck faucet with wrist handles & deck mounted liquid soap dispenser.
- 7-PS-26** includes a "Hands Free" AC/DC operated gooseneck faucet & deck mounted, liquid soap dispenser.
- 7-PS-75** Sink Only. Faucet not included. Three 1-3/8" dia. Holes Punched.

**CONSTRUCTION:**

All TIG welded.  
 Welded areas blended to match adjacent surfaces and to a satin finish.  
 Die formed Countertop Edge with a 3/8" No-Drip offset.  
 Bowl made from One sheet of stainless steel - No Seams.

**MATERIAL:**

Heavy gauge type 304 series stainless steel.  
 Wall mounting bracket is Galvanized and of offset design.  
 All fittings are brass / chrome plated unless otherwise indicated.

**MECHANICAL:**

Faucet supply is 1/2" IPS male thread hot and cold.  
**Faucet Flow Rate:** 1.0 GPM/3.8 LPM aerator. 60 PSI.

**TAPERED BOWL DESIGNS AVAILABLE**

[Click Here For Spec sheet!](#)



7-PS-41



7-PS-77E

**Optional 8" O.C. Faucets Available**



**Heavy Duty  
5-1/2"  
Gooseneck**

K-132



**Heavy Duty  
9" Swing  
Spout**

K-133



Optional A.D.A. Compliant Bubbler can be added to the 7-PS-25, 7-PS-26 & 7-PS-75 Only  
 Use Model # K-47

**WARNING:**

Equipment that includes a faucet may expose you to chemicals, including lead, that are known to the State of California to cause cancer or birth defects or other reproductive harm. For more Info., visit [www.p65warnings.ca.gov](http://www.p65warnings.ca.gov).



Customer Service Available To Assist You **1-800-645-3166** 8:30 am - 7:00 pm E.S.T.

For Orders & Customer Service:

Email: [customer@advancetabco.com](mailto:customer@advancetabco.com) or Fax: 631-242-6900

For Smart Fabrication™ Quotes:

Email: [smartfab@advancetabco.com](mailto:smartfab@advancetabco.com) or Fax: 631-586-2933

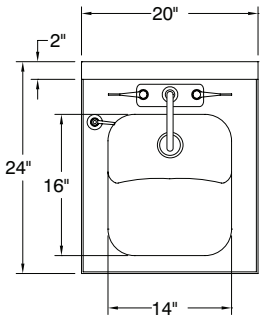
# DIMENSIONS and SPECIFICATIONS

TOL Overall: ± .500" Interior: ± .250"

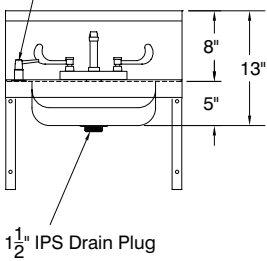
FITTINGS SUPPLIED AS SHOWN

ALL DIMENSIONS ARE TYPICAL

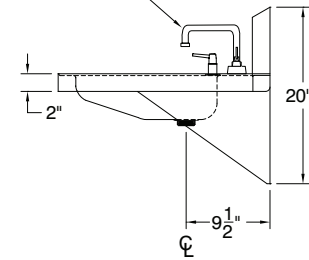
## 7-PS-25



Deck Mounted Soap Dispenser

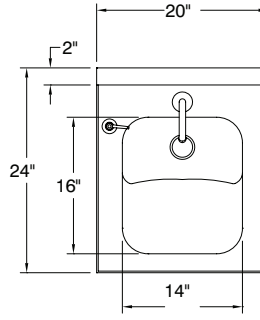


Faucet With Wrist Handles

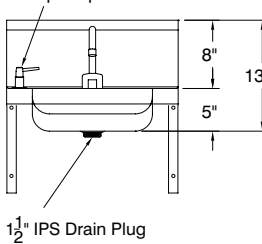


25 lbs.

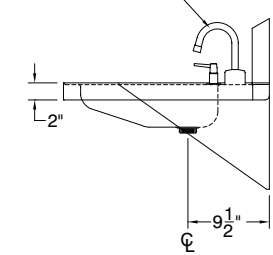
## 7-PS-26



Deck Mounted Soap Dispenser

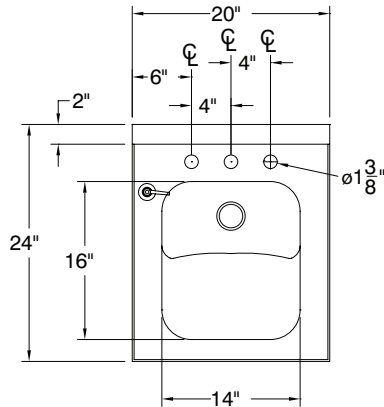


Electronic Faucet

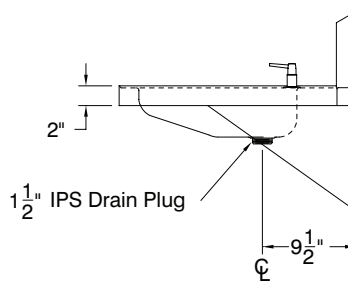
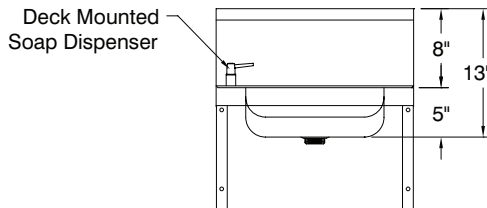


25 lbs.

## 7-PS-75



Deck Mounted Soap Dispenser



25 lbs.

