

Model No. :: **20043L-LEDDMG-BL/CLR**
 Name :: **Mist**



Project Name :: _____
 Location :: _____
 Type :: _____
 Quantity :: _____
 Notes :: _____

Product Information

Product ID :: 20043L
 UPC Code :: 641594228991
 Mounting Type :: Wall
 Finish :: Black (BL)
 Diffuser :: Clear (CLR)
 Alt. Finishes :: Satin (SAT)
 Alt. Diffusers :: N/A

Product Dimensions

Fixture		Canopy	
Length ::	N/A	Length ::	N/A
Width ::	7.2"	Width ::	N/A
Diameter ::	N/A	Diameter ::	N/A
Extension ::	3.6"	Height ::	N/A
Height ::	10"		
Overall Height ::	N/A Max.		



Technical Specifications

Qualifications

Location Rating :: Wet
 Certification :: cULus
 IES File :: No
 JA8 Compliant :: No
 Title 20 Compliant :: N/A
 Energy Star :: No
 ADA Compliant :: Yes
 Marine Grade :: Yes
 Emergency Lighting :: No
 Warranty :: 5 Year Limited

Specifications

Frame Material :: Steel
 Diffuser Material :: Glass
 Voltage :: 120v
 Lamping Type :: Dedicated LED
 Lamping Base :: SSL
 Lamp Quantity :: 1
 Lamp Wattage :: 15 W
 Total Wattage :: 15 W
 Lamps Included :: Yes
 J-Box Type :: Standard

Photometrics

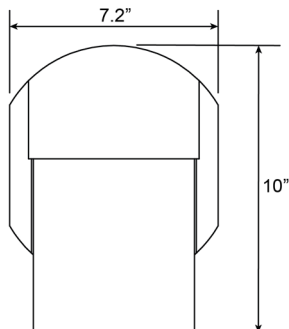
CCT :: 3000
 CRI :: 90
 Wattage :: 15 W
 Nominal Lumens :: 1100
 Delivered Lumens :: N/A

Recommended Dimmers

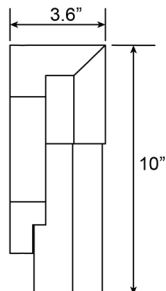
Lutron Maestro MACL-153MH;
 Lutron Maestro MAELV-600-WH; Leviton SureSlide NO.6672

Custom Options :: N/A; Additional Items :: N/A

Line Drawing #1



Line Drawing #2



IES File

Image Not Available

Toll Free 800-828-5483 or www.AccessLighting.com

14410 Myford Road, Irvine, CA 92606

The information provided is subject to change without notice. ©2018 Access Lighting Corporation. All Rights Reserved
 Rev. 201901 Filename: 20043L-LEDDMG-BL_CLR.pdf

