

Stock Code: **62535LEDDCS-BS/ACR**

Collection: Retreat

PRODUCT INFORMATION

Base: 62535 Parent: 62535LEDD
Mounting Type: Wall UPC: 641594248425
Finish: Brushed Steel
Diffuser: Acrylic Lens

PRODUCT MEASUREMENTS

FIXTURE	BACKPLATE / CANOPY
Length:	Length
Width: 18"	Width:
Diameter	Diameter:
Height: 4.5"	Height:
Extension: 3.25"	
Overall Height:	

TECHNICAL SPECIFICATIONS

SPECIFICATIONS

Frame Material: Metal
Diffuser Material: Acrylic
Lamping Type: SSL (Dedicated LED) Jbox: Standard
Lamping Base: SSL Lamp Wattage: 20 W
Lamp Quantity: 1 Total Wattage: 20 W
Voltage: 120v Lamps Included: Yes

QUALIFICATIONS

Location Rating: Damp
Certification: ETL (US/Canada) Listed
ADA Compliant: Yes Energy Star: No
JA8 Compliant: Yes Emergency Lighting: No
Marine Grade Finish: No
Warranty: 5 Year

PHOTOMETRICS

Dimmable: Yes Nominal Lumens: 1300 Lm
CRI: 90 Delivered Lumens: N/A
CCT: Multi-CCTK
Recommended Dimmers:
(ELV)LUTRON Maestro CL MACL-153M; (ELV)LUTRON Skylark
Contour CTCL-153P; (ELV)Leviton R11-DSL06-1TW;
(TRIAC)LUTRON Diva DVCL-153P

ADDITIONAL NOTES

Horizontal and Vertical Mounting; 3 CCT Selectable Switch
2700K, 3000K, 4000K

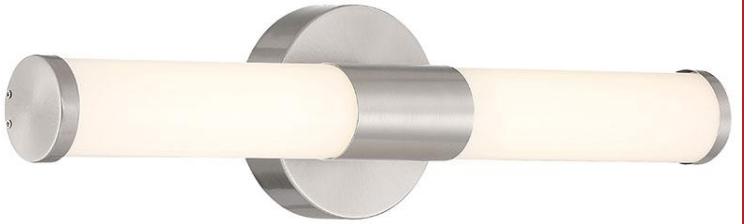
Project Name: _____

Location: _____

Type: _____

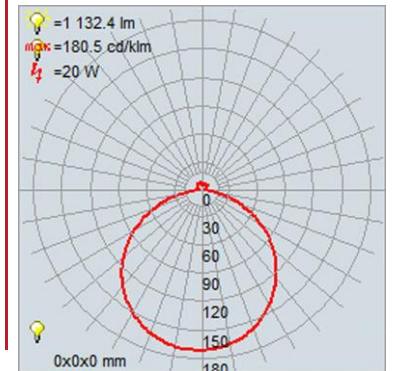
Quantity: _____

Notes: _____



LINE DRAWING

IES FILE



In addition to Access Lighting's purchase and warranty terms and conditions, by signing below or placing an order, you agree that you are authorized to bind the entity placing any order and acknowledge the following: All of sizes and measurements are approximate and all images are for illustrative purposes only. In the event of an inconsistency, the "Product Measurements" section controls. There also may be slight differences in the colors and designs compared to the displayed and printed images.

Signature: _____

Print Name _____ Date: _____

Toll Free 800-828-5483 www.AccessLighting.com

14410 Myford Road, Irvine, CA 92606

The information is subject to change without notice. 3/21/2023 62535LEDDCS-BS_ACR.pdf

access
LIGHTING