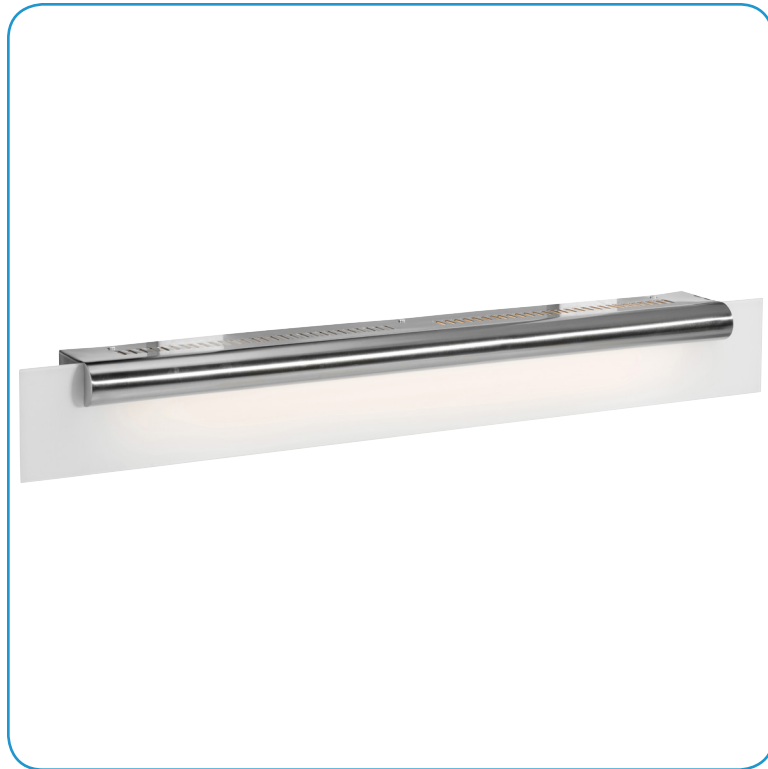


Model No :: **31019-SC/FST**
 Name :: Roto



Project Name :: _____
 Location :: _____
 Type :: _____
 Quantity :: _____
 Notes :: _____

Product Information

Product ID :: 31019
 UPC Code :: 641594104905
 Mounting Type :: Wall
 Finish :: Satin Chrome (SC)
 Diffuser :: Frosted (FST)
 Alt. Finishes :: N/A
 Alt. Diffusers :: N/A

Product Dimensions

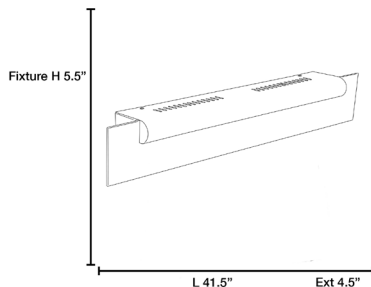
Fixture		Canopy
Length ::	N/A	Length :: N/A
Width ::	41.5"	Width :: N/A
Diameter ::	N/A	Diameter :: N/A
Extension ::	4.5"	Height :: N/A
Height ::	5.5"	
Overall Height ::	N/A Max.	



Technical Specifications

Qualifications	Specifications	Photometrics	Recommended Dimmers
Location Rating :: Dry	Frame Material :: Steel	CCT :: 3000	NOT DIMMABLE
Certification :: cULus	Diffuser Material :: Glass	CRI :: N/A	
IES File :: No	Voltage :: 120v	Wattage :: 78 W	
JA8 Compliant :: No	Lamping Type :: Fluorescent	Nominal Lumens :: 5688	
Energy Star :: No	Lamping Base :: Bi-Pin	Delivered Lumens :: N/A	
ADA Compliant :: No	Lamp Quantity :: 2	Custom Options :: N/A; Additional Items :: N/A	
Marine Grade :: No	Lamp Wattage :: 39 W		
Emergency Lighting :: No	Total Wattage :: 78 W		
Warranty :: 1 Year Limited	Lamps Included :: Yes		
	J-Box Type :: Standard		

Line Drawing #1



Line Drawing #2

Image Not Available

IES File

Image Not Available

Toll Free 800-828-5483 or www.AccessLighting.com

14410 Myford Road, Irvine, CA 92606
 The information provided is subject to change without notice. ©2018 Access Lighting Corporation. All Rights Reserved
 Rev. 201809 Filename:: 31019-SC_FST.pdf

